



An Act for the gradual abolition of slavery (NYSA_13036-78_L1799_Ch062)



Map of Indian Reservation at Kane-audea (NYSA_A0025-78_B4_V58_p1)



Map of the Indian Reservation at Gardeau (NYSA_A0025-78_B4_V58_p15)



Map of Indian Reservation at Squawky-hill (NYSA_A0025-78_B4_V58_p33)



Map of the Indian Reservations at Big-tree and Little-Beards Town (NYSA_A0025-78_B4_V58_p41)



Map of the Indian Reservation at Canawagus (NYSA_A0025-78_B4_V58_p51)



American Revolution. Payments Due to Colonel Brinckerhoff's Regiment (NYSA_A0200-78_B10_payroll)



**Map of land near Fort Hunter on the Mohawk river, 1790
(NYSA_A0272-78_V49_p146)**



List containing the names of Indians commissioned by General Schuyler, on the 1st June, 1779 (NYSA_A0272-78_V50_p028)



List of persons (whites and Indians) not compensated for military service, 1791 (NYSA_A0272-78_V50_p029)



**Return of survey, and map of the same, for Jonas Seely
(NYSA_A0272-78_V53_p130)**



**Notice by John Van Benthuisen for a grant of land in Rhinebeck,
1791 (NYSA_A0272-78_V55_p125)**



Return of a survey for John Van Benthuisen, 1791 (NYSA_A0272-78_V55_p126_s1)



**Oath by John Van Benthuisen affirming his land ownership, 1792
(NYSA_A0272-78_V55_p126_s2)**



Voucher of Michael Connolly in regard to military service in the 1st N.Y. regiment, 1794 (NYSA_A0272-78_V57_p057)



Plan of Lewiston. Map #8 (NYSA_A0273-78_8)



Map of the part of Fish Creek Reservation purchased from the Oneida Indians. Map #21 (NYSA_A0273-78_21)



Map of a tract of land called Houtton's Bush on the West Side of Lake Champlain. Map #30 (NYSA_A0273-78_30)



Map of Coxeborough Patent. Map #52 (NYSA_A0273-78_52)



Map of a survey in the Oneida Reservation. Map #70 (NYSA_A0273-78_70)



Map of a survey of lands on Lake George. Map #80 (NYSA_A0273-78_80)



Map of 64,669 acres of land, situate between the Military Lands and 20 Townships. Map #86A (NYSA_A0273-78_86A)



Map of a tract equal to 6 miles Square reserved for use of the Indians of the Village of St. Regis. Map #89 (NYSA_A0273-78_89)



Map of 3 tracts of land situate in Herkimer County. Map #91 (NYSA_A0273-78_91)



**Map of sundry tracts of land on the Delaware river in Broome County.
Map #94A (NYSA_A0273-78_94A)**



**Map of Alexandria, being two tracts of land situate at the north end of
Lake George. Map #96 (NYSA_A0273-78_96)**



**Map of 9,973 acres of land laid out for Nathaniel Mallory and others.
Map #98 (NYSA_A0273-78_98)**



Map of Township Cato (No. 3). Map #103 (NYSA_A0273-78_103)



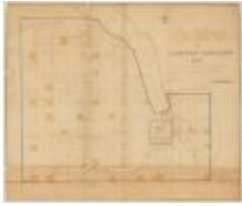
**Map of Township Sempronius (No. 13). Map #113 (NYSA_A0273-
78_113)**



Map of Township Milton (No. 17). Map #117 (NYSA_A0273-78_117)



Map of the Township Solon (No. 20). Map #120 (NYSA_A0273-78_120)



Map of Ulysses Township (No. 22) of the Military Gratuity Lands. Map #122 (NYSA_A0273-78_122)



Map of Township Virgil (No. 24) of the Military Gratuity Lands. Map #124 (NYSA_A0273-78_124)



Map of Township Cincinnatus (No. 25) of the Military Gratuity Lands. Map #125 (NYSA_A0273-78_125)



Map of the Township of Galen. Map #127 (NYSA_A0273-78_127)



Map of Stirling. Map #128A (NYSA_A0273-78_128A)



Map of Stirling (No. 28). Map #128B (NYSA_A0273-78_128B)



Map of lands called Brother Town. Map #136A (NYSA_A0273-78_136A)



Map of settlements of the Indians, October 1799 (NYSA_A0273-78_136B)



A map of that part of the Oneida Reservation directed to be surveyed and laid into lots by an Act passed April 5th 1798 (NYSA_A0273-78_137)



Map of a certain tract of land on the west side of the Sacondago river. Map #138 (NYSA_A0273-78_138)



Map of Great Hardenbergh Patent. Map #140 (NYSA_A0273-78_140)



Map of the Late Cayuga Reservation. Map #144 (NYSA_A0273-78_144)



Map of the Town of Rhinebeck. Map #179 (NYSA_A0273-78_179)



Map of a tract granted to Hoffman. Map #180 (NYSA_A0273-78_180)



Map of the County of Richmond. Map #186 (NYSA_A0273-78_186)



Map of the Town of Poughkeepsie in Dutchess County. Map #187 (NYSA_A0273-78_187)



Map of the Towns of German and Clermont. Map #188 (NYSA_A0273-78_188)



Map of Clinton, Stanford, Washington and Amenia in Dutchess County. Map #189A (NYSA_A0273-78_189A)



Map of Clinton, Stanford, Washington and Amenia in Dutchess County. Map #189B (NYSA_A0273-78_189B)



Map of the Town of Beekman in Dutchess County. Map #191 (NYSA_A0273-78_191)



Map of Scriba's Patent and Boylston Tract. Map #204 (NYSA_A0273-78_204)



Map of the late Onondaga Reservation, 1795. Map #210 (NYSA_A0273-78_210)



Map of the late Onondaga Reservation. (Copy) Map #210B (NYSA_A0273-78_210B_Copy)



Map of tract of land. The Property of John and Nicholas Roosevelt and Co. Map #211 (NYSA_A0273-78_211)



Map of Lot No. 4, in the division of Macomb's Purchase. Map #215 (NYSA_A0273-78_215)



Map of the outlines of a tract of land commonly called the Cheningo Triangle. Map #218 (NYSA_A0273-78_218)



Map of lands owned by Sir William Johnson. Map #222A (NYSA_A0273-78_222A)



Map of part of the land in Royal Grant. Map #222B (NYSA_A0273-78_222B)



Map of Oneida Reservation. Map #227 (NYSA_A0273-78_227)



Map of the late Oneida Reservation. Map #227A (NYSA_A0273-78_227A)



Map of the late Oneida Reservation. Map #227B (NYS A0273-78_227B)



Map of Great Lot No. 4 in Macomb's Purchase. Map #228 (NYS A0273-78_228)



Map of the Town of Fishkill in Dutchess County. Map #231 (NYS A0273-78_231)



Map of the corporation of the City of Hudson and the Town of Claverack. Map #234 (NYS A0273-78_234)



Map of Lake George. Map #302A (NYS A0273-78_302A)



Map of Lake George. Map #302B (NYS A0273-78_302B)



An outline map of the Genesee lands in the County of Ontario. Map #345 (NYS A0273-78_345)



Map of the Town of Montgomery. Map #360 (NYSA_A0273-78_360)



Map of Schoharie County. Map #363 (NYSA_A0273-78_363)



Map of the Town of Hempstead in Queens County. Map #365 (NYSA_A0273-78_365)



Map of the Town of Marlborough, Ulster County. Map #367 (NYSA_A0273-78_367)



2 Maps of the Town of Flatbush, Kings County. Map #368 (NYSA_A0273-78_368)



Map of the Town of Catskill, Green County. Map #369A (NYSA_A0273-78_369A)



Map of the Town of Catskill, Greene County. Map #369B (NYSA_A0273-78_369B)



Map of the Towns of Marble and Hurley in the County of Ulster. Map #371 (NYSA_A0273-78_371)



Map of the Town of Rochester, Ulster County. Map #379 (NYSA_A0273-78_379)



Map of Southeast Dutchess and the Town of Franklin, Dutchess County. Map #382 (NYSA_A0273-78_382)



Map of the Town of New Paltz, Ulster County. Map #383 (NYSA_A0273-78_383)



Map of the Town of Rome, Oneida County. Map #384 (NYSA_A0273-78_384)



Map of the Town of Newburg, Orange County. Map #385 (NYSA_A0273-78_385)



Map of the Town of New Windsor, Ulster County. Map #388 (NYSA_A0273-78_388)



Map of the Towns of Poundridge and North Castle in Westchester County. Map #392 (NYSA_A0273-78_392)



Map of the Town of Southhold. Suffolk County. Map #394A (NYSA_A0273-78_394A)



Map of the Town of Southhold. Suffolk County. Map #394B (NYSA_A0273-78_394B)



Map of the ground about the Salt Springs near the Salt Lake in Onondaga County. Map #395 (NYSA_A0273-78_395)



Map of the Town of Freehold in Albany County. Map #396 (NYSA_A0273-78_396)



Map of the Town of Brookland, Bushwick Township and Newtown. Map #398 (NYSA_A0273-78_398)



Map of the Town of Kingston, in the County of Ulster. Map #399 (NYSA_A0273-78_399)



Map of Westchester. Map #400 (NYSA_A0273-78_400)



Map of the Town of Yonkers. Westchester County. Map #401 (NYSA_A0273-78_401)



**Map of the Town of Yonkers, Westchester County. Map #401 (Copy)
(NYSA_A0273-78_401_copy)**



**Map of the Towns of Pelham, Greensburg, Harrison and White Plains.
Map #404 (NYSA_A0273-78_404)**



**Map of the Town of Pelham, Westchester County. Map #404A (Copy)
(NYSA_A0273-78_404A)**



**Map of Greensburg, Westchester County. Map # 404B (Copy)
(NYSA_A0273-78_404B)**



**Map of the Town of Harrison, Westchester County. Map #404C (Copy)
(NYSA_A0273-78_404C)**



**Map of the Town of White Plains, Westchester County. Map #404D
(Copy) (NYSA_A0273-78_404D)**



**Map of the Town of Rye, Westchester County. Map #405
(NYSA_A0273-78_405)**



Map of the Village of Salina. Map #406 (NYSA_A0273-78_406)



Map of Onondaga Salt Lake. Map #410 (NYSA_A0273-78_410)



Map of the Town of Kinderhook. Map #411 (NYSA_A0273-78_411)



Map of the Town of Oyster Bay. Queens County. Map #414 (NYSA_A0273-78_414)



Detail from map of the Town of Oyster Bay, showing Lloyd's Neck. Map #414 (NYSA_A0273-78_414_detail_1)



Map of the Towns of Flushing and North Hempstead. Queens County. Map #415 (NYSA_A0273-78_415)



Map of the Town of New Utrecht, Kings County. Map #417 (NYSA_A0273-78_417)



Map of the Town of Mount Pleasant. Map #418 (NYSA_A0273-78_418)



Map of the Town of Coxsackie, Green County. Map #420 (NYSA_A0273-78_420)



Map of the Town of Salem and North Salem. Westchester County. Map #421 (NYSA_A0273-78_421)



Map of the Towns of Newcastle and Bedford. Map #422 (NYSA_A0273-78_422)



Map of the Township of Islip, Suffolk County. Map #423A (NYSA_A0273-78_423A)



Map of the Township of Islip, Suffolk County. Map #423B (NYSA_A0273-78_423B)



Map of the Township of West Chester. Map #424 (NYSA_A0273-78_424)



Map of the Town of Shawangunk, Ulster County. Map #426 (NYSA_A0273-78_426)



Map of Fort Richmond, Staten Island. Map #427 (NYSA_A0273-78_427)



Map of lands adjoining Lake Champlain in Clinton and Essex Counties. Map #428 (NYSA_A0273-78_428)



Map of Phillipstown, Dutchess County. Map #430 (NYSA_A0273-78_430)



Map of the Town of Jamaica, Queens County. Map #431 (NYSA_A0273-78_431)



Map of the Towns of Scarsdale and Mamaroneck. Map #432 (NYSA_A0273-78_432)



Map of the Town of Shawangunk, Ulster County. Map #433 (NYSA_A0273-78_433)



Plan for subdividing the State Lands south of Erie Canal and east of West Street. Map #453 (NYSA_A0273-78_453)



Map of Subdivisions of lands near Church Street, Syracuse. Map #458B (NYSA_A0273-78_458B)



Map of several pieces of land situated in the Town of Bushwick, Kings County. Map #464 (NYSA_A0273-78_464)



Map of Oriskany Patent. Oneida County. Map #465 (NYSA_A0273-78_465)



Map of Tompkins County. Map #471 (NYSA_A0273-78_471)



Profile of the Wallkill river at Walden, Orange County. Map #472A (NYSA_A0273-78_472A)



Profile of the Wallkill river at Walden, Orange County. Map #472B (NYSA_A0273-78_472B)



**Document with Profile of the Wallkill river at Walden, Orange County.
Map #472C (NYS_A0273-78_472C)**



Lake George from original plot. Map #476A (NYS_A0273-78_476A)



Lake George from original plot. Map #476B (NYS_A0273-78_476B)



**Adgate's Western Patent. Boonville, Oneida County. Map #484
(NYS_A0273-78_484)**



**Cayuga, Onondaga and Oneida Indian Reservations. Map #487
(NYS_A0273-78_487)**



**Map of Coarse Salt Lands at Syracuse, N. Y. Map #494 (NYS_A0273-
78_494)**



**Bluff Point, in Raquette Lake, Hamilton County. Map #500
(NYS_A0273-78_500)**



Map of Lake George. 1880. Map #502 (NYS_A0273-78_502)



Totten and Crossfield's Purchase, Township 40 showing Raquette Lake. Map #503 (NYSA_A0273-78_503)



Totten and Crossfield's Purchase, Township 40 showing Raquette Lake. Map #503A (NYSA_A0273-78_503A)



Boundary line between the Towns of Exeter and Burlington. Map #507 (NYSA_A0273-78_507)



Map of Hoyt's Salt Block, 1st Ward, Syracuse. Map #508 (NYSA_A0273-78_508)



Corner Location of Benson Township, Jerseyfield Patent and Lawrence Patent. Map #512 (NYSA_A0273-78_512)



Macomb's Purchase. Great Lot No. 1, Township 20, Franklin County. Map #513 (NYSA_A0273-78_513)



Map of State Land in Buffalo, New York. Map #515 (NYSA_A0273-78_515)



Sempronius, Lot No. 61. Cayuga County. Map #521 (NYSA_A0273-78_521)



Macomb's Purchase, south part showing Lewis, Jefferson and Oswego Counties. Map #585 (NYSA_A0273-78_585)



Map of Township of Lake Pleasant, Hamilton County. Map #587 (NYSA_A0273-78_587)



Map of State Lands, (Ne-ha-sa-ne park) Hamilton and Herkimer Co. Map #588 (NYSA_A0273-78_588)



Survey of Land for Pietrus Van Dreissen and John Van Dreissen. Map #622 (NYSA_A0273-78_622)



Survey of land for Edward Harrison and others. Map #627A (NYSA_A0273-78_627A)



Survey of land for Edward Harrison and others. Map #627B (NYSA_A0273-78_627B)



Map of Northhampton Patent. also the Philip Livingston Patent. Map #639 (NYSA_A0273-78_639)



Survey of land for Lendert Gansevoort and James Stewart. Map #640 (NYSA_A0273-78_640)



Survey of land for John Weatherhead, Blenheim, Ury Rightmeyer and others. Map #651 (NYSA_A0273-78_651)



Pinefield (Rapelya's Patent) for heirs of David Colden on the Delaware river. 1792. Map #662 (NYSA_A0273-78_662)



Map of various grants south and adjoining map #669. Map #670 (NYSA_A0273-78_670)



Part of Map No. #670 including lands of Joseph Goldthwaite and others. Map #671 (NYSA_A0273-78_671)



Map of Long Point on Lake George. Warren County. Map #672 (NYSA_A0273-78_672)



Map of lands adjoining Lake George near Fort Ticonderoga. Map #673 (NYSA_A0273-78_673)



Map of first tract of Belvidere of George Croghan's Patent, Otsego county. Map #680 (NYSA_A0273-78_680)



Allotment of Coxe's Patent. Oneida county. Map #690 (NYSA_A0273-78_690)



Coxe's Patent, or Coxeborough. Oneida county. Map #691 (NYSA_A0273-78_691)



Survey of land for Philip Livingston, Arent Stevens, Edward Collins and others. Map #692A and 692B (NYSA_A0273-78_692A_692B)



Long Island in Lake George, with adjacent uplands. Warren county. Map #693 (NYSA_A0273-78_693)



Map of Land on upper Hudson river. Map #694 (NYSA_A0273-78_694)



Survey of land for Alex Turner, 25,000 acres, on the Batten kill, and various others adjoining. Map #717 (NYSA_A0273-78_717)



Survey of land for John Lawrence, 1000 acres, north of Artillery Patent, Washington county. Map #720. (NYSA_A0273-78_720)



Map of township of Plattsburgh, 28,000 acres, on Lake Champlain. Map #721 (NYSA_A0273-78_721)



Map of Jellis Fonda, 40,000 acres, in Oneida county. Map #722 (NYSA_A0273-78_722)



Map of subdivison of Fonda's Patent, Oneida county. Map #723 (NYSA_A0273-78_723)



Delaware river, copied from a map by Metcalfe. Map #725 (NYSA_A0273-78_725)



Protraction of Isle La Motte, Lake Champlain, Vermont. Map #726 (NYSA_A0273-78_726)



Palmer's Purchase on the Sacondaga branch of Hudson river. Map #732 (NYSA_A0273-78_732)



Sketch of land in Steuben township, Oneida county; copy of Cockburn's survey. Map #735 (NYSA_A0273-78_735)



**Townships of Hamden and Sidney with subdivisions. Map #736
(NYS_A0273-78_736)**



Townships of Chenango, Randolph, etc. Map #737 (NYS_A0273-78_737)



Patents along the Pennsylvania line, Hooper's tract, Randolph township. Map #739 (NYS_A0273-78_739)



Canadian and Nova Scotia Refugee Lands, Clinton county. Map #744A (NYS_A0273-78_744A)



Canadian and Nova Scotia Refugee Lands, Clinton county. Map #744B (NYS_A0273-78_744B)



Canadian and Nova Scotia Refugee Lands, Clinton county. Map #745A (NYS_A0273-78_745A)



Canadian and Nova Scotia Refugee Lands, Clinton county. Map #745B (NYS_A0273-78_745B)



**Canadian and Nova Scotia Refugee Lands, Clinton county. Map #746
(NYS_A0273-78_746)**



**Map of lands on Lake Champlain near Ticonderoga. Map #747
(NYSA_A0273-78_747)**



**Map of part of the Hoosick Patent, Rensselaer county. Map #748
(NYSA_A0273-78_748)**



**Map of part of the Hoosick Patent, Rensselaer county; by Beeker.
Map #750 (NYSA_A0273-78_750)**



**Land Patents north from the Batten kill, Washington county. Map
#753 (NYSA_A0273-78_753)**



**Map of Royal Grant, 4th allotment on west side of East Canada creek.
Map #754 (NYSA_A0273-78_754)**



**John Evens Grant, western part, Ulster county near New Paltz. Map
#756A (NYSA_A0273-78_756A)**



**John Evens Grant, western part, Ulster county near New Paltz. Map
#756B (NYSA_A0273-78_756B)**



**Map of Willsborough and adj. lands on Lake Champlain. Map #761
(NYSA_A0273-78_761)**



**Township of Nettle Field; also Belvedere; Otsego county. Map #763
(NYSA_A0273-78_763)**



**Survey of land for John Garnsey; 1000 acres. Map #765
(NYSA_A0273-78_765)**



**Survey of land for John Garnsey, on Susquehanna river. Map #766
(NYSA_A0273-78_766)**



**Map of Mamakating, Sullivan county, granted to Catherine Lodge et
al. Map #767A (NYSA_A0273-78_767A)**



**Map of Mamakating, Sullivan county, granted to Catherine Lodge et
al. Map #767B (NYSA_A0273-78_767B)**



**Map of Lake's Patent, adjoining the Wallumschack Patent. Map #770A
(NYSA_A0273-78_770A)**



**Map of Lake's Patent adjoining Wallumschack Patent. Map #770B
(NYSA_A0273-78_770B)**



Locations in the Western Country. Map #772 (NYSA_A0273-78_772)



Map of Lynottville, between Goldsboro and Franklin townships. Map #773 (NYSA_A0273-78_773)



Levels from Fort Edward to Wood Creek and line of proposed canal. Map #774A (NYSA_A0273-78_774A)



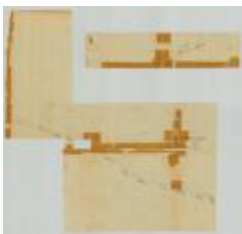
Levels from Fort Edward to Wood Creek and line of proposed canal. Map #774B (NYSA_A0273-78_774B)



Line from outlet of Salmon river, south 60 degrees east, 35 miles; also from near Oneida lake and Wood creek. Map #776 (NYSA_A0273-78_776)



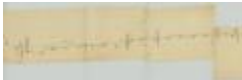
Map of road from Fort George to the river Chazy. Map #777A (NYSA_A0273-78_777A)



Map of road from Fort George to the river Chazy. Map #777B (NYSA_A0273-78_777B)



Map of road from the Oleout to the Cayuga lake. Map #778A (NYSA_A0273-78_778A)



Map of road from the Oleout to the Cayuga lake. Map #778B (NYSA_A0273-78_778B)



Map of road from the Oleout to the Cayuga lake. Map #778C (NYSA_A0273-78_778C)



Map of township of Schenectady. Map #781 (NYSA_A0273-78_781)



Old Military Tract, Outbounds of Township 5, Clinton county and Township 8, Franklin county. Map #782 (NYSA_A0273-78_782)



Hasenclever's Patent on Canada creek, Herkimer county, adjoins Cosby's Manor. Map #784 (NYSA_A0273-78_784)



Map of the town of Marletown on Esopus creek. Map #786 (NYSA_A0273-78_786)



Map of second Township in Benson. Map #788 (NYSA_A0273-78_788)



Map of Canadian Refugee Lands in Clinton county and Township of Mooers on Lake Champlain. Map #789 (NYSA_A0273-78_789)



Map of Brothertown, Oneida Indian Reservation, Oneida county. Map #790 (NYSA_A0273-78_790)



Proposed Town on Niagara river. Map #791 (NYSA_A0273-78_791)



Map of 29 Lots in the Oneida Reservation. Map #792 (NYSA_A0273-78_792)



Lands near Schroon Lake; Platt's Road Patent; Hoffman, etc. Map #793 (NYSA_A0273-78_793)



Survey of land for Nathaniel Mallorv et al.; Clinton county. Map #795 (NYSA_A0273-78_795)



Map of Gage's Patent with Subdivisions, on Canada creek. Map #796 (NYSA_A0273-78_796)



Map of Grande Isle and Isle aux Foret in St. Lawrence river near Kingston. Map #797A (NYSA_A0273-78_797A)



Map of Grande Isle and Isle aux Foret in St. Lawrence river near Kingston. Map #797B (NYSA_A0273-78_797B)



Map of Grande Isle and Isle aux Foret in St. Lawrence river near Kingston. Map #797C (NYSA_A0273-78_797C)



Old Military Tract, Township 6, Clinton county and Township 7, Franklin county. Map #798 (NYSA_A0273-78_798)



Old Military Tract, Township 3, Clinton county; granted to Benj. Birdsall. Map #799 (NYSA_A0273-78_799)



Map of western part of John Evans' Grant, Delaware county. Map #800 (NYSA_A0273-78_800)



Map of Lott's Patent, also of Magin's Patent. Map #803 (NYSA_A0273-78_803)



Map of land at Niagara Falls, part of Mile Strip. Map #805 (NYSA_A0273-78_805)



Map of Hoffman Township on Scaroon lake, Essex county. Map #806 (NYSA_A0273-78_806)



Old Military Tract; Outbounds of Township No. 6, Clinton county and No. 7 in Franklin county. Map #807 (NYS A0273-78_807)



Land of George Burnett and others, near New Paltz. 1797. Map #808 (NYS A0273-78_808)



Land of Ezra L'Hommedieu at the head of Seneca lake. Map #809 (NYS A0273-78_809)



Map of land adjacent to Scroon lake. Map #810 (NYS A0273-78_810)



Lands of Philip Schuyler, with others adjoining. Map #811 (NYS A0273-78_811)



Land at the foot of Shawangunk mountains. Map #812 (NYS A0273-78_812)



Land between Seneca lake and Lake Ontario. Map #813 (NYS A0273-78_813)



Same as Map No. 813. Map #814 (NYS A0273-78_814)



Lands of W.J. Vredenburg, John Lansing, Jr., and Various others adjacent to Friends Settlement. Map #815 (NYS A0273-78_815)



Old Military Tract, Township No. 4, Clinton county, surveyed 1794 by R. Cochran. Map #817 (NYSA_A0273-78_817)



Coxe's Patent, also Hamden Tract, on Susquehanna river. Map #820 (NYSA_A0273-78_820)



Map of land given to the Canadian and Nova Scotia Refugee's. Clinton county. Map #826A (NYSA_A0273-78_826A)



Map of Canadian Refugee Lands, Clinton county. Map #826B (NYSA_A0273-78_826B)



Maps of Corporation Lands at Fort Hunter, Montgomery county. Map #828 (NYSA_A0273-78_828)



Lands and various grants at Fort Hunter, Montgomery county. Map #829 (NYSA_A0273-78_829)



Old Military Tract, Townships 4, 5 and 6 in Clinton county, and 7 and 8 in Franklin county. Map #830 (NYSA_A0273-78_830)



Lysander, No. 1, Oswego and Onondaga counties. Map #831 (NYSA_A0273-78_831)



Hannibal, No. 2, Oswego county. Map #832 (NYSA_A0273-78_832)



Cato, No. 3, Cayuga county. Map #833 (NYSA_A0273-78_833)



Brutus, No. 4, Cayuga county. Map #834 (NYSA_A0273-78_834)



Camillus, No. 5, Onondaga county. Map #835 (NYSA_A0273-78_835)



Cicero, No. 6, Onondaga county. Map #836 (NYSA_A0273-78_836)



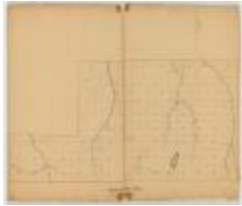
Manlius, No. 7, Onondaga county. Map #837 (NYSA_A0273-78_837)



Aurelius, No. 8, Cayuga county. Map #838 (NYSA_A0273-78_838)



Marcellus, No. 9, Onondaga county. Map #839 (NYSA_A0273-78_839)



Pompey, No. 10, Onondaga county. Map #840 (NYSA_A0273-78_840)



Romulus, No. 11, Seneca county. Map #841 (NYSA_A0273-78_841)



Scipio, No. 12, Cayuga county. Map #842 (NYSA_A0273-78_842)



Sempronius, No. 13, Cayuga county. Map #843 (NYSA_A0273-78_843)



Tully, No. 14, Cortland and Onondaga counties. Map #844 (NYSA_A0273-78_844)



Fabius No. 13, Cortland and Onondaga counties. Map #845 (NYSA_A0273-78_845)



Ovid, No. 16, Seneca county. Map #846 (NYSA_A0273-78_846)



Milton, No. 17, Tompkins and Cayuga counties. Map #847 (NYSA_A0273-78_847)



Locke, No. 18, Tompkins and Cayuga counties. Map #848 (NYSA_A0273-78_848)



Homer, No. 19, Cortland county. Map #849 (NYSA_A0273-78_849)



Solon, No. 20, Cortland county. Map #850 (NYSA_A0273-78_850)



Hector, No. 21, Tompkins county. Map #851 (NYSA_A0273-78_851)



Ulysses, No. 22, Tompkins county. Map #852 (NYSA_A0273-78_852)



Dryden, No. 23, Tompkins County. Map #853 (NYSA_A0273-78_853)



Virgil, No. 24, Cortland county. Map #854 (NYSA_A0273-78_854)



Cincinnatus, No. 25, Cortland county. Map #855 (NYSA_A0273-78_855)



Junius, No. 26, Seneca county. Map #856 (NYSA_A0273-78_856)



Galen, No. 27, Wayne county. Map #857 (NYSA_A0273-78_857)



Map of Kayaderosra Patent, Saratoga county. Map #858 (NYSA_A0273-78_858)



Map of Mayfield Patent, Fulton county; 15,000 acres. Map #862 (NYSA_A0273-78_862)



Map of part of Mayfield Patent, Fulton county. Map #870 (NYSA_A0273-78_870)



Rudolph Staley's tract, 34,000 acres, also Conradt Frank's tract, 3000 acres at Burnet Field. Map #873 (NYSA_A0273-78_873)



Map of lots in the village of Johnstown, Fulton county. Map #875 (NYSA_A0273-78_875)



Part of William Wood's Patent; forfeited by John Wetherhead. Map #876 (NYSA_A0273-78_876)



Map of Stone Arabia Patent, Alexander's Patent, Depeyster's and Van Slyck's patent. Map #879 (NYSA_A0273-78_879)



Map of the village of Johnstown, Fulton county. Map #880 (NYSA_A0273-78_880)



Map of Chuctinunda town on the Mohawk river; by J. V. Alen. Map #881 (NYSA_A0273-78_881)



Kayaderosera Patent, 8th, 9th and 10th allotment. Part of Saratoga Patent. Map #882 (NYSA_A0273-78_882)



Map of Wallomsack Patent and lands adjoining, Rensselaer Co. Map #883 (NYSA_A0273-78_883)



Map of Wallomsack Patent; also Snyders Patent called Mapletown. Map #884 (NYSA_A0273-78_884)



Kingsborough Patent, Lot No. 399, Fulton County. Map #885 (NYSA_A0273-78_885)



Map of Thomas Wenham's grant on Mohawk river (Oriskany patent); also land north of Cosby's Manor. Map #886A (NYSA_A0273-78_886A)



Map of Thomas Wenham's grant on Mohawk river (Oriskany patent); also land north of Cosby's Manor. Map #886B (NYSA_A0273-78_886B)



Kayaderosera Patent, Allotments Nos. 17 to 25, except No. 21, Saratoga county. Map #888 (NYSA_A0273-78_888)



Kingsborough Patent, Lots 7, 8, 9, and 10, Fulton Co. Map #891A (NYSA_A0273-78_891A)



**Kingsborough Patent, Lots 7, 8, 9, and 10, Fulton Co. Map #891B
(NYS A0273-78_891B)**



**Kayaderosera Patent, Line between Lots 11 and 12. Map #892
(NYS A0273-78_892)**



**Macomb's Purchase, Great Lots 1, 2 and 3, Franklin and St. Lawrence
counties. Map #897 (NYS A0273-78_897)**



**Map of part of the State of New York with parts of the adjacent states,
1793-1794 (NYS A0448-79_V1_p45)**



Plan for a State Arsenal (NYS A0802-78_V09_040-044)



**Acknowledgement of war service, Oneida Indians (NYS A0802-
78_V15_070b)**



**Copies of accounts audited by the New York State Auditor General,
Book A (NYS A0870-77_BookA)**



**Copies of accounts audited by the New York State Auditor General,
Book A, pages 1-20 (NYSA_A0870-77_BookA_Page001-20)**



**Copies of accounts audited by the New York State Auditor General,
Book A, pages 21-40 (NYSA_A0870-77_BookA_Page021-40)**



**Copies of accounts audited by the New York State Auditor General,
Book A, pages 41-60 (NYSA_A0870-77_BookA_Page041-60)**



**Copies of accounts audited by the New York State Auditor General,
Book A, pages 61-80 (NYSA_A0870-77_BookA_Page061-80)**



**Copies of accounts audited by the New York State Auditor General,
Book A, pages 81-100 (NYSA_A0870-77_BookA_Page081-100)**



**Copies of accounts audited by the New York State Auditor General,
Book A, pages 101-120 (NYSA_A0870-77_BookA_Page101-120)**



**Copies of accounts audited by the New York State Auditor General,
Book A, pages 121-140 (NYSA_A0870-77_BookA_Page121-140)**



**Copies of accounts audited by the New York State Auditor General,
Book A, pages 141-160 (NYSA_A0870-77_BookA_Page141-160)**



**Copies of accounts audited by the New York State Auditor General,
Book A, pages 161-180 (NYSA_A0870-77_BookA_Page161-180)**



**Copies of accounts audited by the New York State Auditor General,
Book A, pages 181-200 (NYSA_A0870-77_BookA_Page181-200)**



**Copies of accounts audited by the New York State Auditor General,
Book A, pages 201-220 (NYSA_A0870-77_BookA_Page201-220)**



**Copies of accounts audited by the New York State Auditor General,
Book A, pages 221-240 (NYSA_A0870-77_BookA_Page221-240)**



**Copies of accounts audited by the New York State Auditor General,
Book A, pages 241-260 (NYSA_A0870-77_BookA_Page241-260)**



**Copies of accounts audited by the New York State Auditor General,
Book A, pages 261-280 (NYSA_A0870-77_BookA_Page261-280)**



**Copies of accounts audited by the New York State Auditor General,
Book A, pages 281-300 (NYSA_A0870-77_BookA_Page281-300)**



**Copies of accounts audited by the New York State Auditor General,
Book A, pages 301-320 (NYSA_A0870-77_BookA_Page301-320)**



**Copies of accounts audited by the New York State Auditor General,
Book A, pages 321-326 (NYSA_A0870-77_BookA_Page321-326)**



**Copies of accounts audited by the New York State Auditor General,
Book B (NYSA_A0870-77_BookB)**



**Copies of accounts audited by the New York State Auditor General,
Book B, pages 1-20 (NYSA_A0870-77_BookB_Page001-20)**



**Copies of accounts audited by the New York State Auditor General,
Book B, pages 21-40 (NYSA_A0870-77_BookB_Page021-40)**



**Copies of accounts audited by the New York State Auditor General,
Book B, pages 41-60 (NYSA_A0870-77_BookB_Page041-60)**



**Copies of accounts audited by the New York State Auditor General,
Book B, pages 61-80 (NYSA_A0870-77_BookB_Page061-80)**



**Copies of accounts audited by the New York State Auditor General,
Book B, pages 81-100 (NYSA_A0870-77_BookB_Page081-100)**



**Copies of accounts audited by the New York State Auditor General,
Book B, pages 101-120 (NYSA_A0870-77_BookB_Page101-120)**



**Copies of accounts audited by the New York State Auditor General,
Book B, pages 121-140 (NYSA_A0870-77_BookB_Page121-140)**



**Copies of accounts audited by the New York State Auditor General,
Book B, pages 141-160 (NYSA_A0870-77_BookB_Page141-160)**



**Copies of accounts audited by the New York State Auditor General,
Book B, pages 161-180 (NYSA_A0870-77_BookB_Page161-180)**



**Copies of accounts audited by the New York State Auditor General,
Book B, pages 181-200 (NYSA_A0870-77_BookB_Page181-200)**



**Copies of accounts audited by the New York State Auditor General,
Book B, pages 201-220 (NYSA_A0870-77_BookB_Page201-220)**



**Copies of accounts audited by the New York State Auditor General,
Book B, pages 221-240 (NYSA_A0870-77_BookB_Page221-240)**



**Copies of accounts audited by the New York State Auditor General,
Book B, pages 241-260 (NYSA_A0870-77_BookB_Page241-260)**



**Copies of accounts audited by the New York State Auditor General,
Book B, pages 261-280 (NYSA_A0870-77_BookB_Page261-280)**



**Copies of accounts audited by the New York State Auditor General,
Book B, pages 281-300 (NYSA_A0870-77_BookB_Page281-300)**



**Copies of accounts audited by the New York State Auditor General,
Book B, pages 301-320 (NYSA_A0870-77_BookB_Page301-320)**



**Copies of accounts audited by the New York State Auditor General,
Book B, pages 321-340 (NYSA_A0870-77_BookB_Page321-340)**



**Copies of accounts audited by the New York State Auditor General,
Book B, pages 341-360 (NYSA_A0870-77_BookB_Page341-360)**



**Copies of accounts audited by the New York State Auditor General,
Book B, pages 361-366 (NYS_A0870-77_BookB_Page361-366)**



Appraisal for land in Montgomery County, 1790 (NYS_A4016-77_V9_F70d)



Deed for lands in Pittstown, 1795 (NYS_A4016-77_V9_F192a)



Survey of land in Pittstown by Hazael Shephard, 1795 (NYS_A4016-77_V9_F192b)



**Description of land forfeited in Pittstown by Robert Leake, 1792
(NYS_A4016-77_V9_F192c)**



Survey of forfeited land in Pittstown, 1795 (NYS_A4016-77_V9_F192d)



**Map of land lots in the Totten and Crossfield Patent, circa 1790s
(NYS_A4016-77_V10_F137)**



A map of the late Onondaga Reservation laid into lots of 250 acres each, 1795 (NYSA_B1610-99_27)



Map of Small's Patent, 1795 (NYSA_B1610-99_71)



Map of Part of the First Allotment of the Hurley Patentee Woods in the Town of Hurley Containing 5,100 Acres (NYSA_B1773-01_B3_F03)



Index to enrolled decrees, 1712-1799 (NYSA_J0066-82_Index)



Index to miscellaneous files in Chancery, 1772-1847 (NYSA_J0071-82_Index)



Government. Chirograph of 1793 (NYSA_J1011-82_B1_1793Chirograph)



First Circuit engrossed minutes, January 7, 1790 (NYSA_JN518-17_V01_p254)



John Lloyd, Jr. executor of Joseph Lloyd versus Charles Hewlett (NYSA_JN519-17_134_E05)



People v. James Heading (NYSA_JN522-17_P_1156)



People v. Jonathan N. Mallory (NYSA_JN522-17_P_2260)



People v. Shadreck Mead (NYSA_JN522-17_P_2352)



People v. George Hill et al. (NYSA_JN522-17_P_2668)



People v. Nicholas Lake, Jr. et al. (NYSA_JN522-17_P_2669)



Engrossed minutes of the Supreme Court of Judicature, January 1790 (NYSA_JN531-17_R007_1790-01-19_1790-01-23)



Engrossed minutes of the Supreme Court of Judicature, January 1790 (NYSA_JN531-17_R007_1790-01-25_1790-01-29)



Engrossed minutes of the Supreme Court of Judicature, January 1790 (NYSA_JN531-17_R007_1790-01-30)



Index to Engrossed minutes of the Supreme Court of Judicature, January 1790 (NYSA_JN531-17_R007_1790-01_Alphabet_listing)



Engrossed minutes of the Supreme Court of Judicature, April 1790 (NYSA_JN531-17_R007_1790-04-20_1790-04-24)



Engrossed minutes of the Supreme Court of Judicature, April - May 1790 (NYSA_JN531-17_R007_1790-04-26_1790-05-03)



Engrossed minutes of the Supreme Court of Judicature, May 1790 (NYSA_JN531-17_R007_1790-05-05_1790-05-07)



Engrossed minutes of the Supreme Court of Judicature, May 1790 (NYSA_JN531-17_R007_1790-05-08)



A Map of Tract of Land between the Delaware and Susquehannah Rivers (NYSL_SC7004_B2_F28)



A Survey of Two Pieces of Land Run Off the Southern Part of Guysbert Dedericks Farm for Jacob Trumpbour (NYSL_SC7004_B3_F11)



Map [of] Clarks Bush (NYSL_SC7004_B3_F21)



Survey of Doctor Elias Willard's Farm (NYSL_SC7004_B5_F8)



A Map of Jacob Trumbour's farm as he possesses it & a piece to the South of it which is Commons (NYSL_SC7004_B9_F22)



A Survey of a piece of Land at the falls on the North [ill] Side of the Roundouts kill Leased forever by John Freer (NYSL_SC7004_B9_F28)



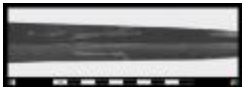
[Map of] Division of Lands in Rochester (NYSL_SC7004_B9_F46)



Hilt of George Washington's Sword (VC10865.1)



Full length view of George Washington's Sword (VC10865.2)



Detail of engraving on George Washington's Sword (VC10865.3)



George Washington Pistol (VC10865.10)
