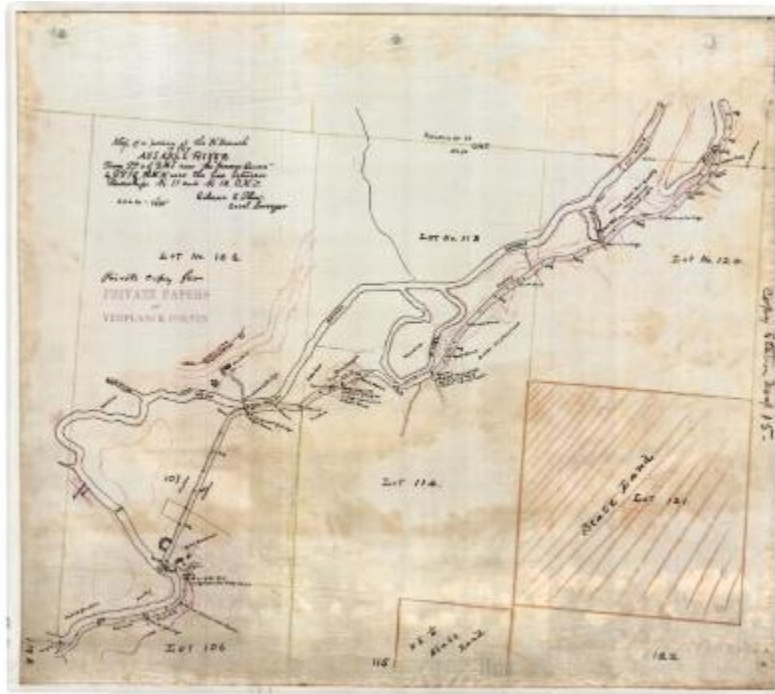


Map of a Portion of the West Branch of the Ausable River



Hand drawn survey map of the West branch of the Ausable River. This map shows the West branch of the Ausable River, along with part of the Elba River. This map also shows various buildings along the Ausable River. The map is marked, "Private copy from private papers of Verplanck Colvin." Original map is 22.4" x 19.5" inches and is held by the Dept. of Environmental Conservation.

Identifier

NYSA_B1405-96_118A15

Alternate Identifier

DMS ID Number: 184686

Date

circa 1870 – 1890

Contributor

Colvin, Verplanck, 1847-1920

Repository

New York State Archives

Source

New York State Archives, Dept. of Environmental Conservation, Bureau of Real Property, Verplanck Colvin maps of the Adirondack wilderness

Rights

This image is provided for education and research purposes. Rights may be reserved. Responsibility for securing permissions to distribute, publish, reproduce or other use rest with the user. For additional information see our [Copyright and Use Statement](#)

Special Project

Environmental History Virtual Resource Collection

More From This Series

Verplanck Colvin maps of the Adirondack wilderness

Geographic Locations

Adirondack Mountains (is associated with)

Essex County (is associated with)