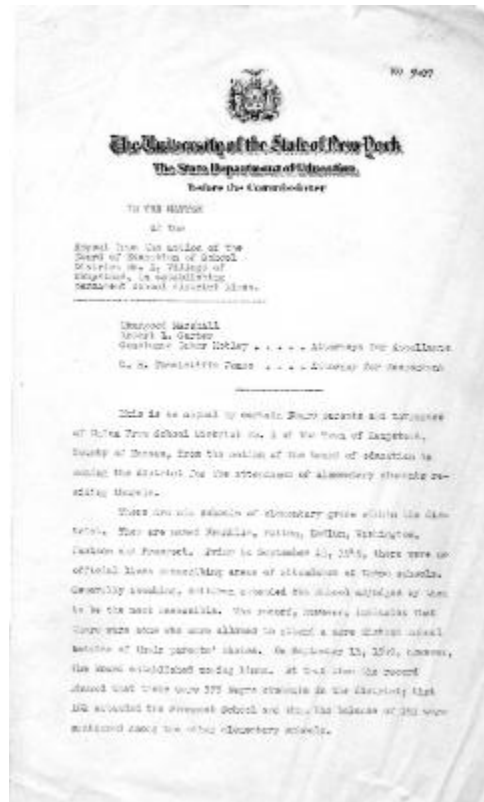


In the matter of the appeal from the action of the Board of Education of School District No. 1, Village of Hempstead



Attorneys Motley, Marshall and Carter argued school boundary lines were gerrymandered in a way that left Black elementary school children segregated from their white peers and made to attend an all-Black school. Appeal was sustained. Education Commissioner Francis Spaulding ruled that boards of education are not required to bring about an even distribution of students of all races within its schools but that zones should not be drawn in a way that results in racial segregation. Spaulding declared the lines establishing the Prospect School zone were irregular and should be restudied and realigned so that "all of the children who should properly be expected to attend the Prospect School on the ground of their geographical proximity to said school, be included in the zone."

Identifier

NYSA_B0496-05_Decision_5407_p31-33

Repository

New York State Archives

Source

New York State Archives. New York (State). Education Department. Office of Counsel. Files of appeals to the Superintendent of Public Instruction, Commissioner of Education, and Board of Regents. B0496-05. Box 78, Decision 5407. Box 78, Decision 5407

Rights

This image is provided for education and research purposes. Rights may be reserved. Responsibility for securing permissions to distribute, publish, reproduce or other use rest with the user. For additional information see our [Copyright and Use Statement](#)

More From This Series

Files of appeals to the Superintendent of Public Instruction, Commissioner of Education, and Board of Regents

Geographic Locations

Long Island (is associated with)