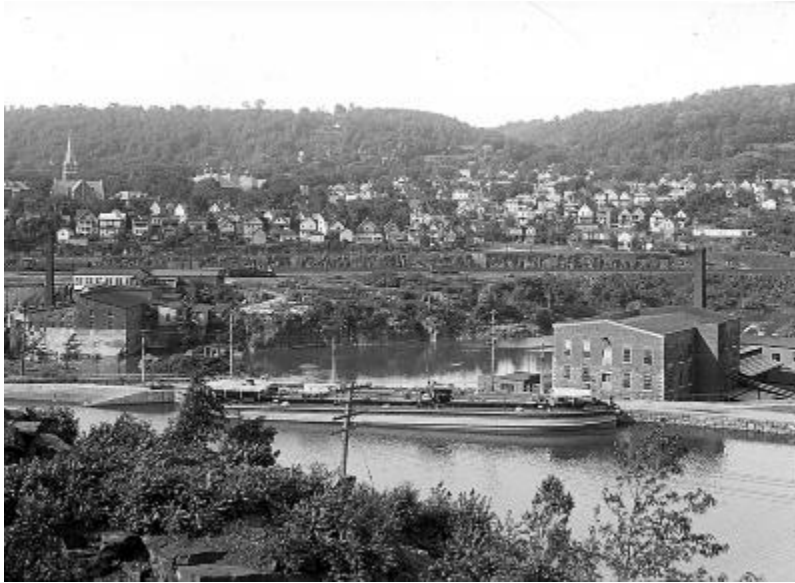


## Barge Canal. Little Falls, View from South



New York. Little Falls. View from south: Barge Canal, Mohawk River, factories, residential part of city. (1928)

### Identifier

NYSA\_A3045-78\_B14498

### Alternate Identifier

**DMS ID Number:** 1690

**Negative Numbers:** B14498

### Date

January 1 1928

### Repository

New York State Archives

### Source

New York State Archives, New York (State). Education Dept. Division of Visual Instruction. Instructional lantern slides, ca. 1856-1939. Series A3045-78, No. B14498.

### Rights

This image is provided for education and research purposes. Rights may be reserved. Responsibility for securing permissions to distribute, publish, reproduce or other use rest with the user. For additional information see our [Copyright and Use Statement](#)

### More From This Series

Division of Visual Instruction instructional lantern slides

### Geographic Locations

Herkimer County (is associated with)

Mohawk River (is associated with)