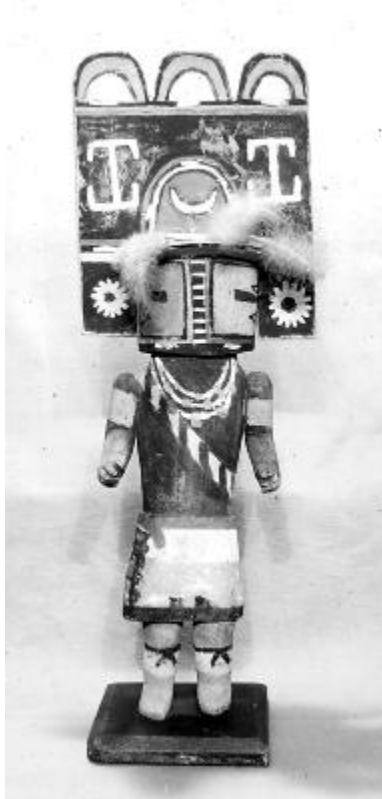


Native Americans. Kachina Doll



A Kachina doll, a ceremonial carved wooden figure with an elaborate headdress made by Indians of the southwestern United States. Courtesy of Rochester Museum of Arts and Sciences (1937).

Identifier

NYSA_A3045-78_B16703

Alternate Identifier

DMS ID Number: 1502

Negative Numbers: B16703

Date

January 1 1937

Repository

New York State Archives

Source

New York State Archives. New York (State). Education Dept. Division of Visual Instruction. Instructional lantern slides, ca. 1856-1939. Series A3045-78, No. B16703.

Rights

This image is provided for education and research purposes. Rights may be reserved. Responsibility for securing permissions to distribute, publish, reproduce or other use rest with the user. For additional information see our [Copyright and Use Statement](#)

More From This Series

Division of Visual Instruction instructional lantern slides

Geographic Locations

Rochester (is associated with)