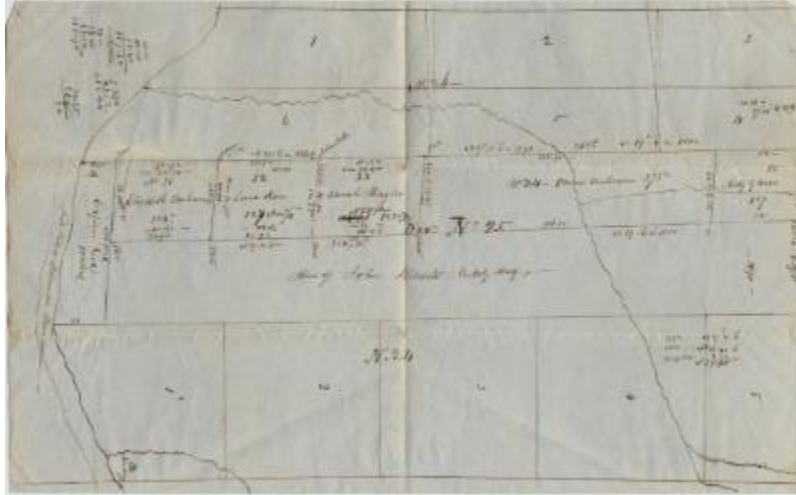


A Map and Survey of W 1/2 of [Division] No. 25 in [Great Lot] No. 2, Hardenbergh Patent



Map and survey of the western half of Division No. 25 of Great Lot No. 2 in the Hardenbergh Patent, within the bounds of the in the Town of Fremont in the Catskill Mountain region. Scale indeterminable

Identifier

NYSL_SC17820_B3F2_001

Alternate Identifier

DMS ID Number: 86344

Date

1849

Repository

New York State Library

Source

New York State Library, SC17820, John Kiersted Family papers, Box 3, Folder 2.

Rights

This record is not part of the New York State Archives' collection and is presented on our project partner's behalf for educational use only. Please contact the home repository for information on copyright and reproductions.

More From This Series

John Kiersted Family papers

Geographic Locations

Sullivan County (is associated with)