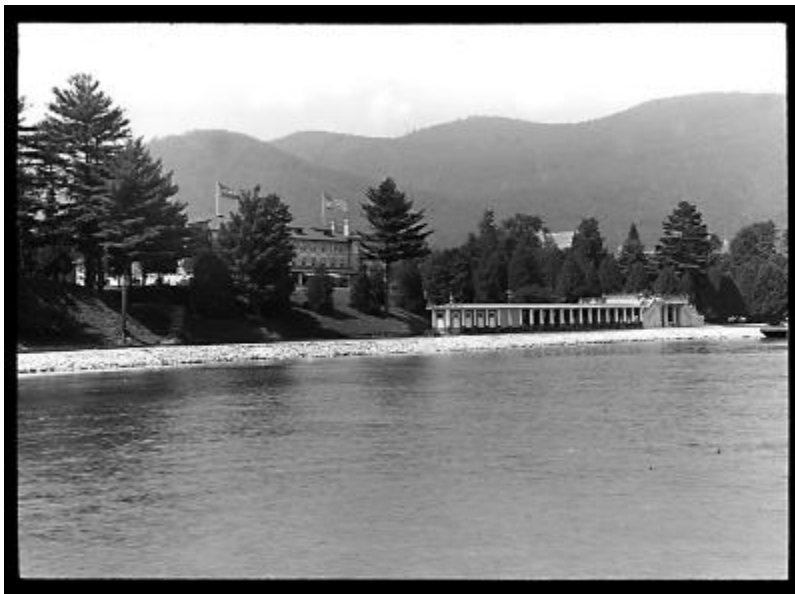


## Lake George, Warren County



View of the Fort William Henry Hotel and its grounds in Lake George, Warren County, seen from Lake George. Mountains are visible in the background.

**Identifier**

NYSA\_A3045-78\_Dn\_Gg96

**Alternate Identifier**

**DMS ID Number:** 143138

**Call Numbers:** Dn\_Gg96

**Date**

1911

**Repository**

New York State Archives

**Source**

New York State Archives. Education Dept. Division of Visual Instruction. Instructional lantern slides, 1911-1925, A3045-78, DnGg96

**Rights**

This image is provided for education and research purposes. Rights may be reserved. Responsibility for securing permissions to distribute, publish, reproduce or other use rest with the user. For additional information see our [Copyright and Use Statement](#)

**More From This Series**

Division of Visual Instruction instructional lantern slides

**Geographic Locations**

Lake George (is associated with)

Adirondack Mountains (is associated with)