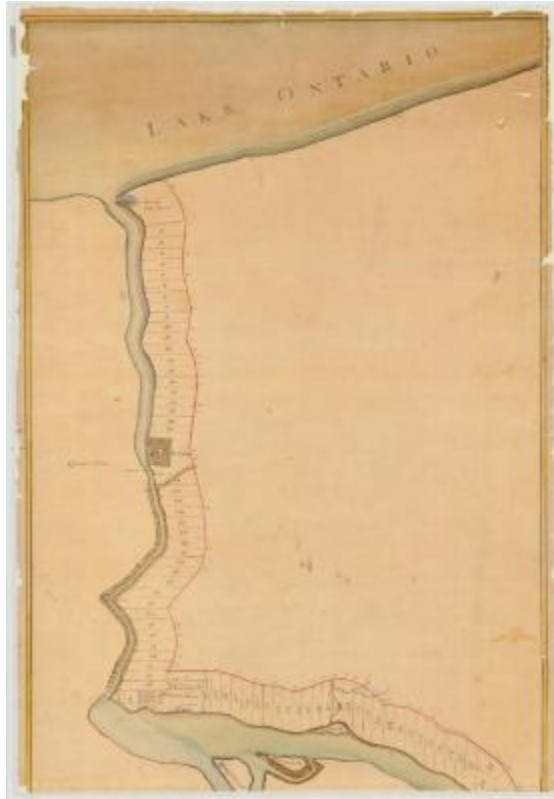


Map of the Niagara River. Map #132A



Map of the Niagara River, and the lots on the east side thereof. Ceded to the State. [Erie and Niagara Counties]

Identifier

NYSA_A0273-78_132A

Alternate Identifier

DMS ID Number: 183225

Date**Repository**

New York State Archives

Source

New York State Archives. New York (State). State Engineer and Surveyor. Survey maps of lands in New York State, ca. 1711-1913. Series A0273-78, Map #132A.

Rights

This image is provided for education and research purposes. Rights may be reserved. Responsibility for securing permissions to distribute, publish, reproduce or other use rest with the user. For additional information see our [Copyright and Use Statement](#)

More From This Series

Survey maps of lands in New York State

Geographic Locations

Erie County (is associated with)

Niagara County (is associated with)