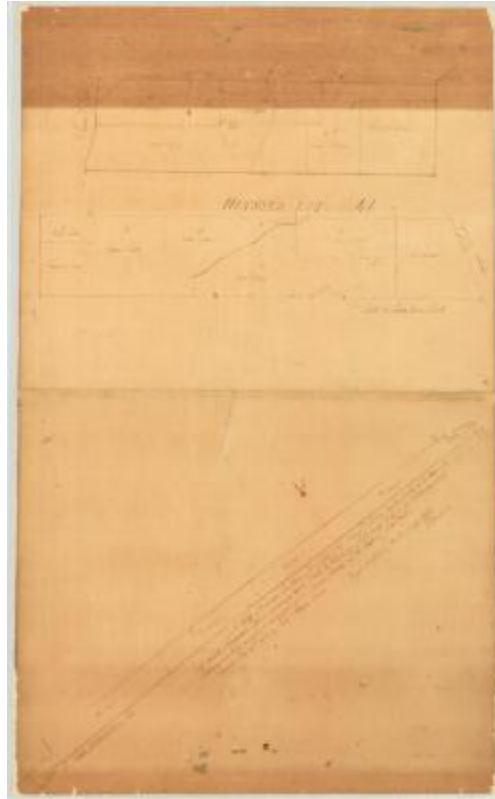


Map of 201 Acres of land lying in the Town of Sullivan. Map #265



Map of 201 Acres 3 roods of land, lying in the Town of Sullivan, bounded north by the northwest part of the Oneida Reservation, east by the Canaseraga Creek, south by Varick and Bell's Patent, west by the Chittenengo Creek. Surveyed and lotted according to the directions of the Surveyor General of the State of New York. Surveyed December 29th, 1823, by John Adams, Surveyor. Also, Ovid Lot No. 75, Cayuga County, and Ulysses No. 41, Tompkins County.

Identifier

NYSA_A0273-78_265

Alternate Identifier

DMS ID Number: 184666

Date

December 29 1823

Contributor

Adams, John (surveyor)

Repository

New York State Archives

Source

New York State Archives. New York (State). State Engineer and Surveyor. Survey maps of lands in New York State, ca. 1711-1913. Series A0273-78, Map #265.

Rights

This image is provided for education and research purposes. Rights may be reserved. Responsibility for securing permissions to distribute, publish, reproduce or other use rest with the user. For additional information see our [Copyright and Use Statement](#)

More From This Series

Survey maps of lands in New York State

Geographic Locations

Tompkins County (is associated with)

Madison County (is associated with)