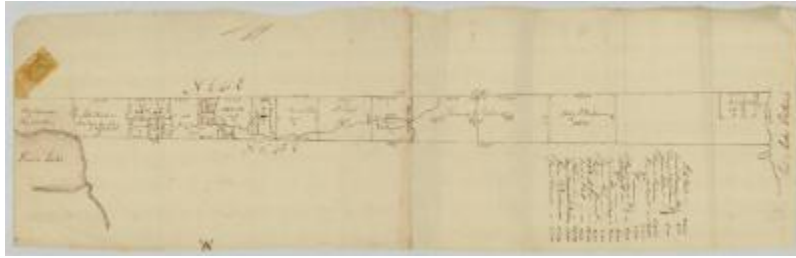


## Land between Seneca lake and Lake Ontario. Map #813



Land between Seneca lake and Lake Ontario; a gore in Ontario and Wayne counties.

**Identifier**

NYSA\_A0273-78\_813

**Alternate Identifier**

**DMS ID Number:** 186715

**Date**

1711 – circa 1913

**Repository**

New York State Archives

**Source**

New York State Archives. New York (State). State Engineer and Surveyor. Survey maps of lands in New York State, ca. 1711-1913. Series A0273-78, Map #813.

**Rights**

This image is provided for education and research purposes. Rights may be reserved. Responsibility for securing permissions to distribute, publish, reproduce or other use rest with the user. For additional information see our [Copyright and Use Statement](#)

**More From This Series**

Survey maps of lands in New York State

**Geographic Locations**

Ontario County (is associated with)

Wayne County (is associated with)