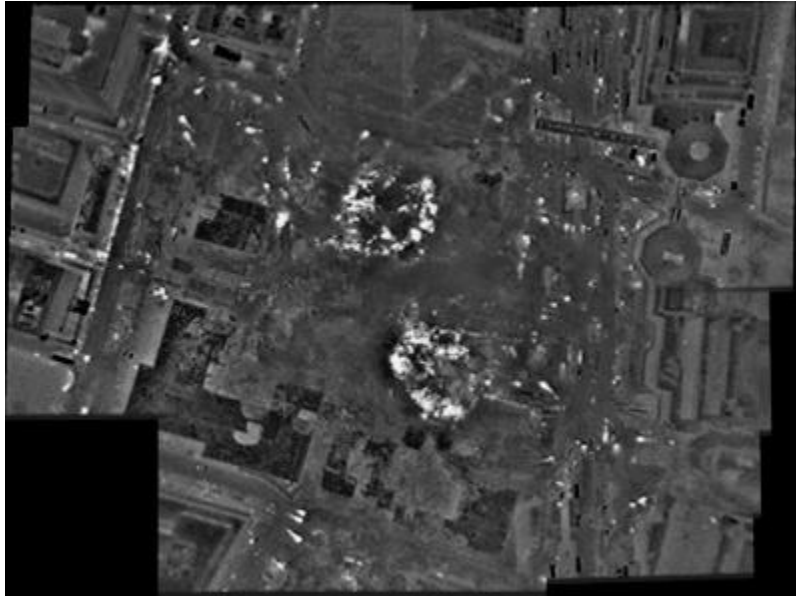


[Thermal mosaic of World Trade Center site, 10/16/2001]



Thermal mosaic of World Trade Center site taken on October 16, 2001, more than a month after the September 11 terrorist attack upon the site. The thermal images captured data that firefighters used to plan their work and assess the effectiveness of different firefighting techniques. By this date, most of the fires in the area had been put out and the debris removed.;This image shows thermal conditions at the World Trade Center site as seen from the north. The footprint of 1 World Trade Center is below and to the right of center, and the footprint of 2 World Trade Center is slightly above center. The L-shaped building toward bottom left is 5 World Trade Center, and 4 World Trade Center is immediately above it. 6 World Trade Center is immediately below the footprint of 1 World Trade Center. The domes at right are part of the adjacent World Financial Center complex. The small white dots are emergency vehicles.

Identifier

NYSA_B1920-04_16oct_thermal_mosaic_011016_big

Alternate Identifier

DMS ID Number: 183033

Date

October 16 2001

Contributor

Earthdata (Firm)

Repository

New York State Archives

Source

New York State Archives. New York (State). Office for Technology. World Trade Center geospatial data, 2001. Series B1920-04, Folder 16oct_thermal_mosaic, Image 011016_big.

Rights

This image is provided for education and research purposes. Rights may be reserved. Responsibility for securing permissions to distribute, publish, reproduce or other use rest with the user. For additional information see our [Copyright and Use Statement](#)

More From This Series

World Trade Center geospatial data

Geographic Locations

Manhattan (is associated with)