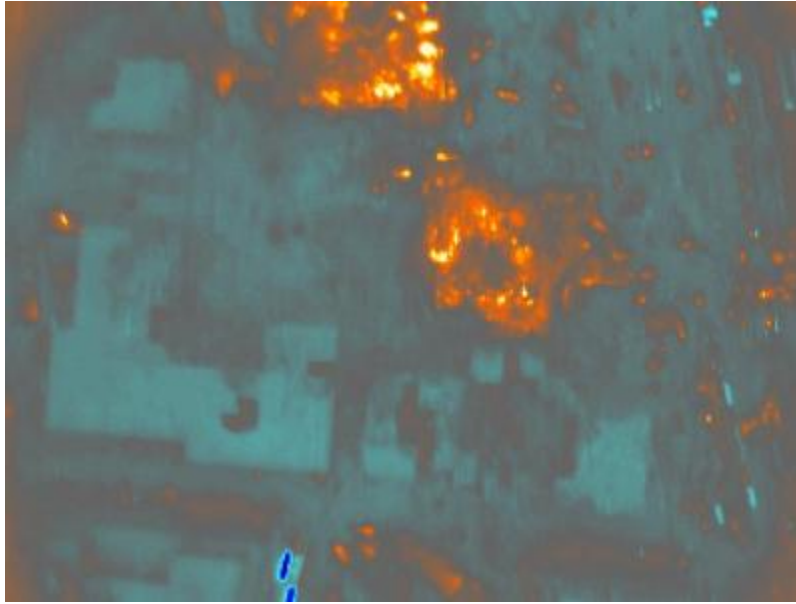


## [Thermal mosaic of World Trade Center site, 10/20/2001]



No. 3 in a sequence of thermal mosaics of World Trade Center site taken on October 20, 2001, more than a month after the September 11 terrorist attack upon the site. These mosaics combine multiple thermal images, which were imported into a Geographic Information System (GIS), placed atop current orthophotographs of the World Trade Center site, and had temperature values colorized. These overlays helped emergency personnel plan work and avoid areas that remained dangerously hot.;In this image, the intense orange spot at the top center is the footprint of 2 World Trade Center. The footprint of 1 World Trade Center is below and slightly to its right.

### Identifier

NYSA\_B1920-04\_20oct\_thermal\_mosaic\_Seq33

### Alternate Identifier

DMS ID Number: 183048

### Date

October 20 2001

### Contributor

Earthdata (Firm)

### Repository

New York State Archives

### Source

New York State Archives. New York (State). Office for Technology. World Trade Center geospatial data, 2001. Series B1920-04, Folder 20oct\_thermal\_mosaic, Image Seq33.

### Rights

This image is provided for education and research purposes. Rights may be reserved. Responsibility for securing permissions to distribute, publish, reproduce or other use rest with the user. For additional information see our [Copyright and Use Statement](#)

### More From This Series

World Trade Center geospatial data

### Geographic Locations

Manhattan (is associated with)