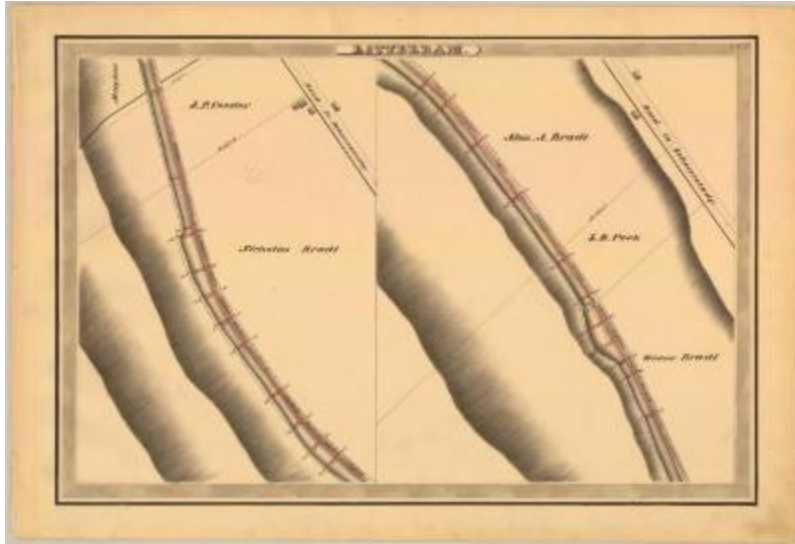


Erie Canal Survey, Rotterdam showing Bradt and Peek



This is an ink, wash and charcoal map of a section of the Erie Canal in Rotterdam. The map is split into two views. The first view shows a bridge, three buildings and the Road to Schenectady. The second view shows a bridge, two buildings and the Road to Schenectady. The red lines indicate courses and distances. The blue lines indicate canal right-of-way. The map also shows the properties of Maybee, J.P. Veeder, Nicholas Bradt, Widow Bradt, L.D. Peek and Abraham A. Bradt.

Identifier

NYSA_A0848-77_MC7_DR10_V10_E10_5

Alternate Identifier

DMS ID Number: 147296

Date

1834

Repository

New York State Archives

Source

New York State Archives, A0848-77, Canal System Survey Maps, 1832-1843, Map no. E10-5

Rights

This image is provided for education and research purposes. Rights may be reserved. Responsibility for securing permissions to distribute, publish, reproduce or other use rest with the user. For additional information see our [Copyright and Use Statement](#)

More From This Series

Canal Commissioners canal system survey maps

Geographic Locations

Schenectady County (is associated with)

Erie Canal (is associated with)