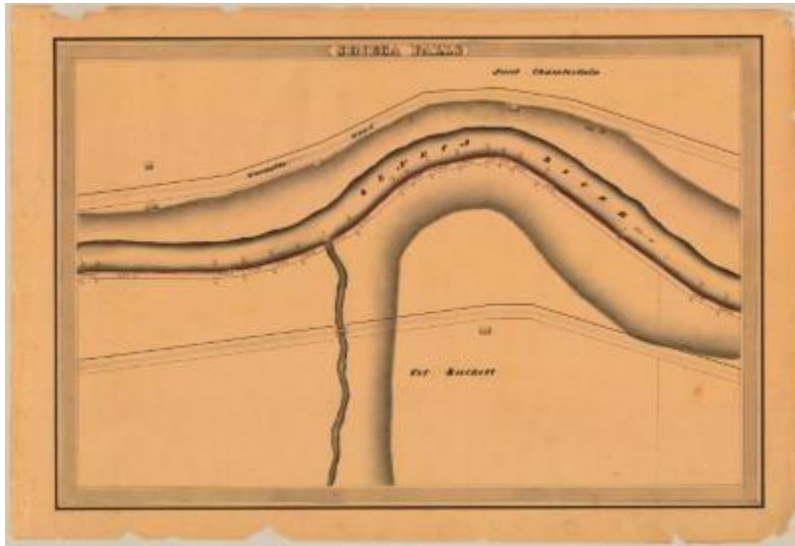


Cayuga and Seneca Canal Survey, Seneca Falls showing Seneca river, Sackett and Chamberlain



This is an ink, wash and charcoal map of a section of the Seneca Canal in Seneca Falls. It shows the Seneca River, a connecting stream, two bridges, eight buildings, a turnpike and an unidentified road. The red lines indicate courses and distances. The blue lines indicate canal right-of-way. The map also shows the properties of Jacob Chamberlain and Col. Sackett.

Identifier

NYSA_A0848-77_MC7_DR14_V15_CS_16

Alternate Identifier

DMS ID Number: 150890

Date

1834

Repository

New York State Archives

Source

New York State Archives, A0848-77, Canal System Survey Maps, 1832-1843, Map no. CS-16

Rights

This image is provided for education and research purposes. Rights may be reserved. Responsibility for securing permissions to distribute, publish, reproduce or other use rest with the user. For additional information see our [Copyright and Use Statement](#)

More From This Series

Canal Commissioners canal system survey maps

Geographic Locations

Seneca County (is associated with)