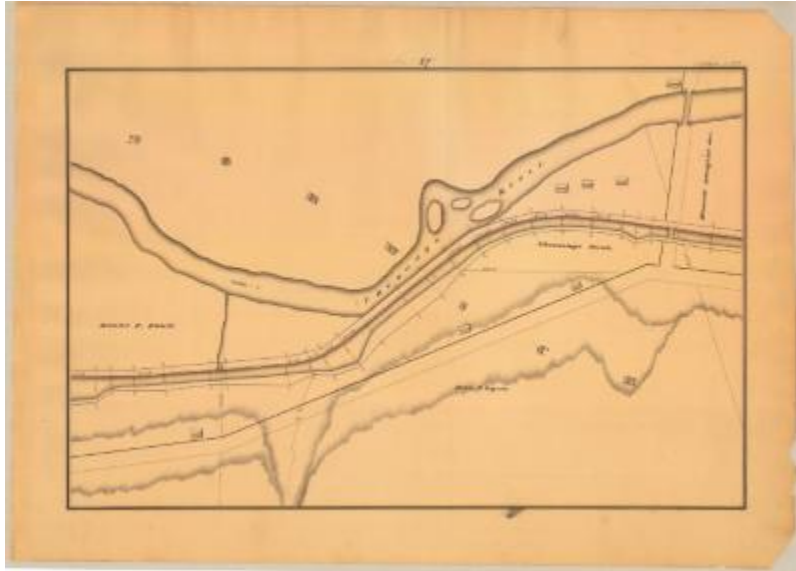


Chenango Canal Survey, Norwich showing Ryers and Bank



This is an ink, wash and charcoal map of a section of the Chenango Canal in Norwich. It shows the Chenango River, a small channel that runs from the river to the canal, two bridges that are lined up and cross the river and the canal, seven buildings and two unidentified roads. The red lines indicate courses and distances. The blue lines indicate canal right-of-way. The map also shows the properties of Daniel F. Bissell, Chenango Bank, Hascall Ransford and John P. Ryers.

Identifier

NYSA_A0848-77_MC7_DR15_V16_CHEN1_87

Alternate Identifier

DMS ID Number: 151163

Date

1838

Repository

New York State Archives

Source

New York State Archives, A0848-77, Canal System Survey Maps, 1832-1843, Map no. CHEN1-87

Rights

This image is provided for education and research purposes. Rights may be reserved. Responsibility for securing permissions to distribute, publish, reproduce or other use rest with the user. For additional information see our [Copyright and Use Statement](#)

More From This Series

Canal Commissioners canal system survey maps

Geographic Locations

Chenango County (is associated with)