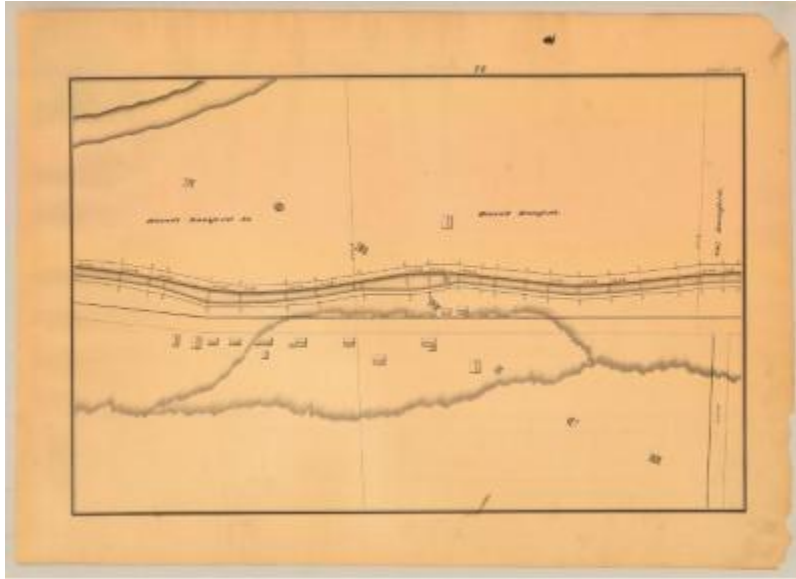


Chenango Canal Survey, Norwich showing Ransford



This is an ink, wash and charcoal map of a section of the Chenango Canal in Norwich. It shows a small portion of the Chenango River, a bridge, fourteen buildings and two unidentified roads that meet to form a T. The red lines indicate courses and distances. The blue lines indicate canal right-of-way. The map also shows the properties of Chris Ransford, Hascall Ransford and Hascall Ransford Jr.

Identifier

NYSA_A0848-77_MC7_DR15_V16_CHEN1_88

Alternate Identifier

DMS ID Number: 151164

Date

1838

Repository

New York State Archives

Source

New York State Archives, A0848-77, Canal System Survey Maps, 1832-1843, Map no. CHEN1-88

Rights

This image is provided for education and research purposes. Rights may be reserved. Responsibility for securing permissions to distribute, publish, reproduce or other use rest with the user. For additional information see our [Copyright and Use Statement](#)

More From This Series

Canal Commissioners canal system survey maps

Geographic Locations

Chenango County (is associated with)