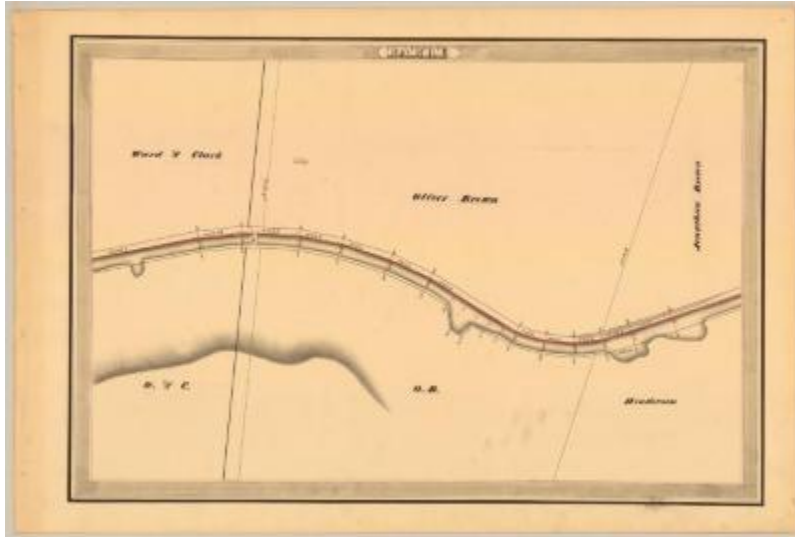


Erie Canal Survey, Barre showing Clark and Henderson



This is an ink, wash and charcoal map of a section of the Erie Canal in Barre. It shows a bridge, four small basins, a building and an unidentified road that runs over the canal. The red lines indicate courses and distances. The blue lines indicate canal right-of-way. The map also shows the properties of Oliver Brown, Jonathan Brown, Henderson, Ward and Clark.

Identifier

NYSA_A0848-77_MC7_DR2_V2_E2_40

Alternate Identifier

DMS ID Number: 145615

Date

1834

Repository

New York State Archives

Source

New York State Archives, A0848-77, Canal System Survey Maps, 1832-1843, Map no. E2-40

Rights

This image is provided for education and research purposes. Rights may be reserved. Responsibility for securing permissions to distribute, publish, reproduce or other use rest with the user. For additional information see our [Copyright and Use Statement](#)

More From This Series

Canal Commissioners canal system survey maps

Geographic Locations

Erie Canal (is associated with)

Orleans County (is associated with)