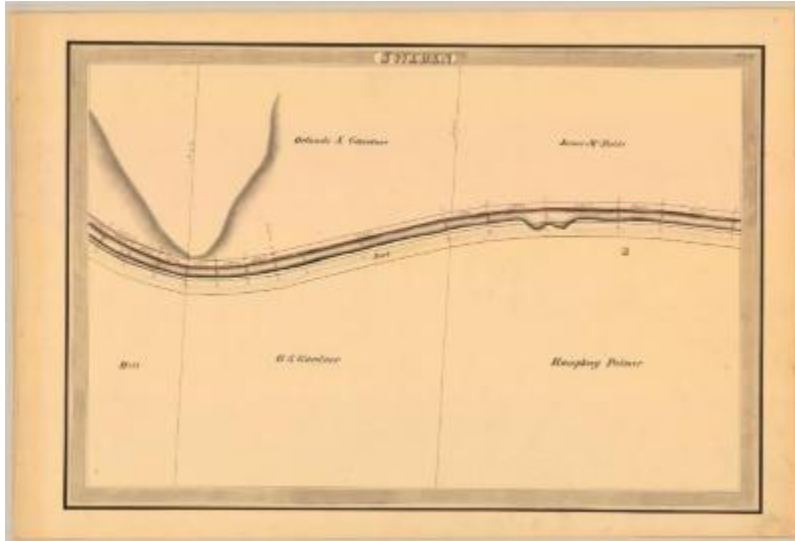


## Erie Canal Survey, Sweden showing Hill and Palmer



This is an ink, wash and charcoal map of a section of the Erie Canal in Sweden. It shows a basin that extends downward, a building and an unidentified road that runs along the bottom of the canal. The red lines indicate courses and distances. The blue lines indicate canal right-of-way. The map also shows the properties of Orlando S. Gardner, James McFields, Humphrey Palmer and Hill.

### Identifier

NYSA\_A0848-77\_MC7\_DR3\_V3\_E3\_4

### Alternate Identifier

DMS ID Number: 145660

### Date

1834

### Repository

New York State Archives

### Source

New York State Archives, A0848-77, Canal System Survey Maps, 1832-1843, Map no. E3-4

### Rights

This image is provided for education and research purposes. Rights may be reserved. Responsibility for securing permissions to distribute, publish, reproduce or other use rest with the user. For additional information see our [Copyright and Use Statement](#)

### More From This Series

Canal Commissioners canal system survey maps

### Geographic Locations

Erie Canal (is associated with)

Monroe County (is associated with)