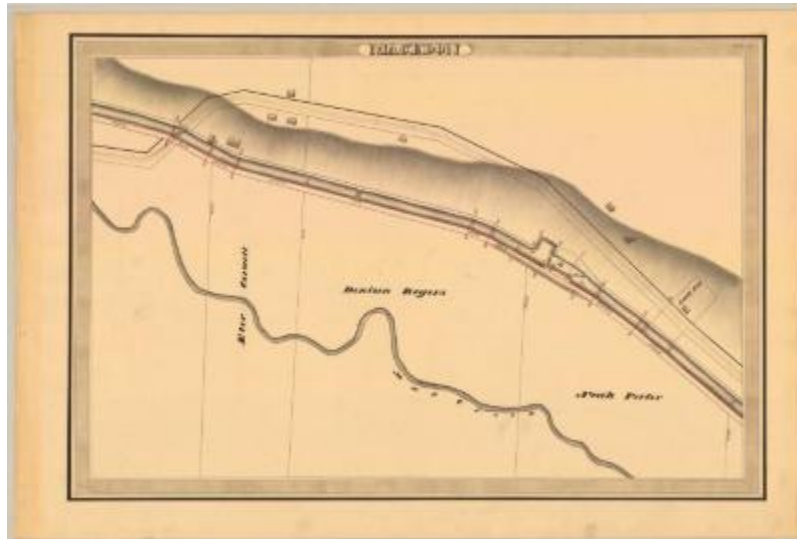


## Erie Canal Survey, Macedon showing Cornell, Porter and Mud Creek



This is an ink, wash and charcoal map of a section of the Erie Canal in Macedon. It shows Mud Creek, a basin, two bridges, a lock lot, ten buildings and an unidentified road. The red lines indicate courses and distances. The blue lines indicate canal right-of-way. The map also shows the properties of Eber Cornell, Denison Rogers and Noah Porter.

### Identifier

NYSA\_A0848-77\_MC7\_DR4\_V4\_E4\_20

### Alternate Identifier

DMS ID Number: 145804

### Date

1834

### Repository

New York State Archives

### Source

New York State Archives, A0848-77, Canal System Survey Maps, 1832-1843, Map no. E4-20

### Rights

This image is provided for education and research purposes. Rights may be reserved. Responsibility for securing permissions to distribute, publish, reproduce or other use rest with the user. For additional information see our [Copyright and Use Statement](#)

### More From This Series

Canal Commissioners canal system survey maps

### Geographic Locations

Erie Canal (is associated with)

Wayne County (is associated with)