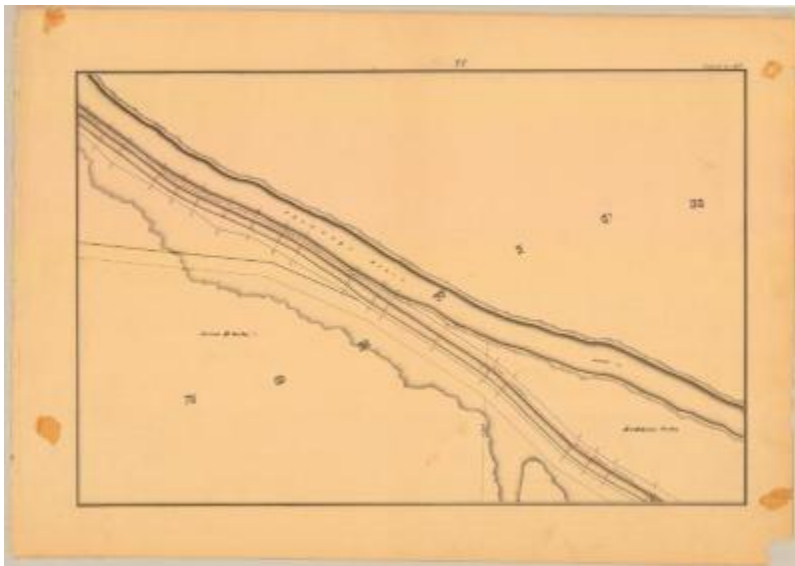


Chenango Canal Survey, Norwich showing Gates and Chenango River



This is an ink, wash and charcoal map of a section of the Chenango Canal in Norwich. It shows the Chenango River, a bridge and an unidentified road. The river, the canal and the road all run diagonally downward on the map. The red lines indicate courses and distances. The blue lines indicate canal right-of-way. The map also shows the properties of Rathbone Gates and Aaron B. Gates.

Identifier

NYSA_A0848-77_MC8_DR1_V17_CHEN2_98

Alternate Identifier

DMS ID Number: 151199

Date

1838

Repository

New York State Archives

Source

New York State Archives, A0848-77, Canal System Survey Maps, 1832-1843, Map no. CHEN2-98

Rights

This image is provided for education and research purposes. Rights may be reserved. Responsibility for securing permissions to distribute, publish, reproduce or other use rest with the user. For additional information see our [Copyright and Use Statement](#)

More From This Series

Canal Commissioners canal system survey maps

Geographic Locations

Chenango County (is associated with)