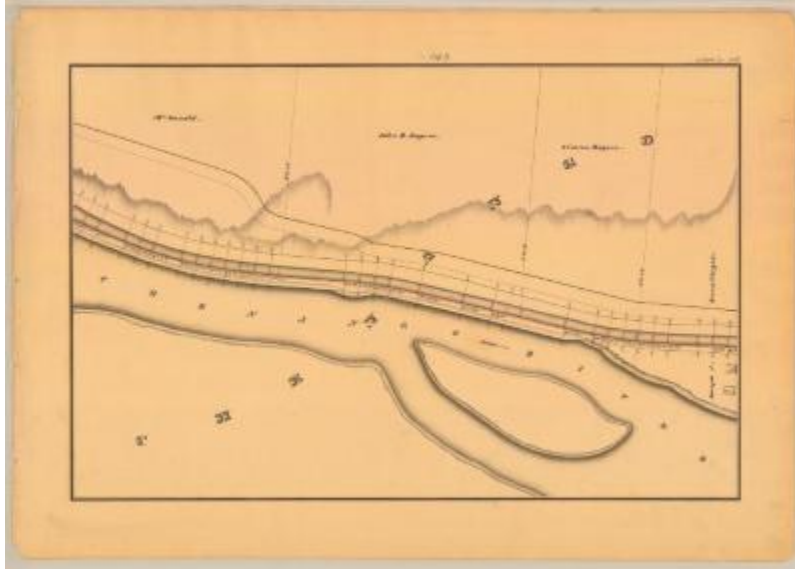


Chenango Canal Survey, Chenango showing McDonald, Rogers and Chenango River



This is an ink, wash and charcoal map of a section of the Chenango Canal in Chenango. It shows the Chenango River which runs along the bottom of the canal, two buildings, and an unidentified road that runs along the top of the canal. The red lines indicate courses and distances. The blue lines indicate canal right-of-way. The map also shows the properties of McDonald, John B. Rogers, Simion Rogers and Joseph J. Terwilliger.

Identifier

NYSA_A0848-77_MC8_DR1_V17_CHEN2_143

Alternate Identifier

DMS ID Number: 151296

Date

1838

Repository

New York State Archives

Source

New York State Archives, A0848-77, Canal System Survey Maps, 1832-1843, Map no. CHEN2-143

Rights

This image is provided for education and research purposes. Rights may be reserved. Responsibility for securing permissions to distribute, publish, reproduce or other use rest with the user. For additional information see our [Copyright and Use Statement](#)

More From This Series

Canal Commissioners canal system survey maps

Geographic Locations

Broome County (is associated with)