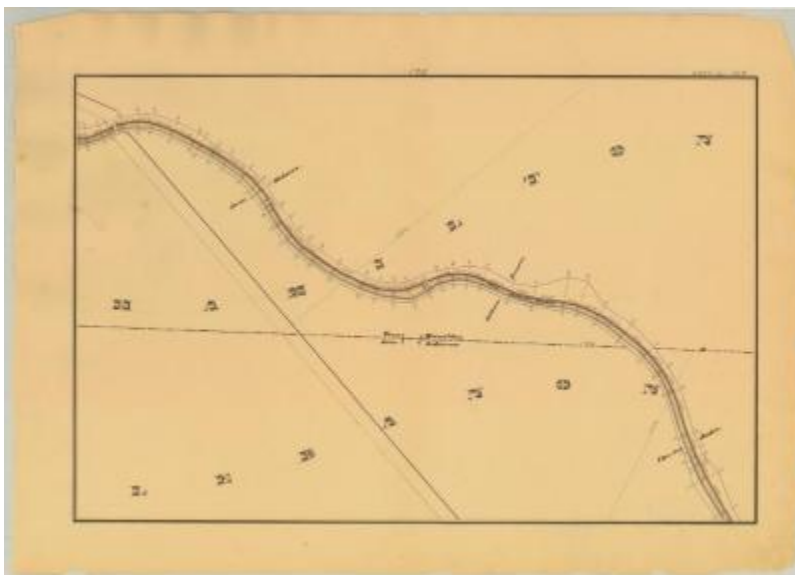


Chenango Canal Survey, Hamilton showing West Branch Feeder, Wickwire and Joslin



This is an ink, wash and charcoal map of a section of the Chenango Canal Feeder in Hamilton. It shows the West Branch Feeder, three bridges and an unidentified road that crosses the canal. The red lines indicate courses and distances. The blue lines indicate canal right-of-way. The map also shows the properties of James Wickwire, William Russell and Charles Joslin.

Identifier

NYSA_A0848-77_MC8_DR1_V17_CHEN2_170

Alternate Identifier

DMS ID Number: 152120

Date

1838

Repository

New York State Archives

Source

New York State Archives, A0848-77, Canal System Survey Maps, 1832-1843, Map no. CHEN2-170

Rights

This image is provided for education and research purposes. Rights may be reserved. Responsibility for securing permissions to distribute, publish, reproduce or other use rest with the user. For additional information see our [Copyright and Use Statement](#)

More From This Series

Canal Commissioners canal system survey maps

Geographic Locations

Madison County (is associated with)