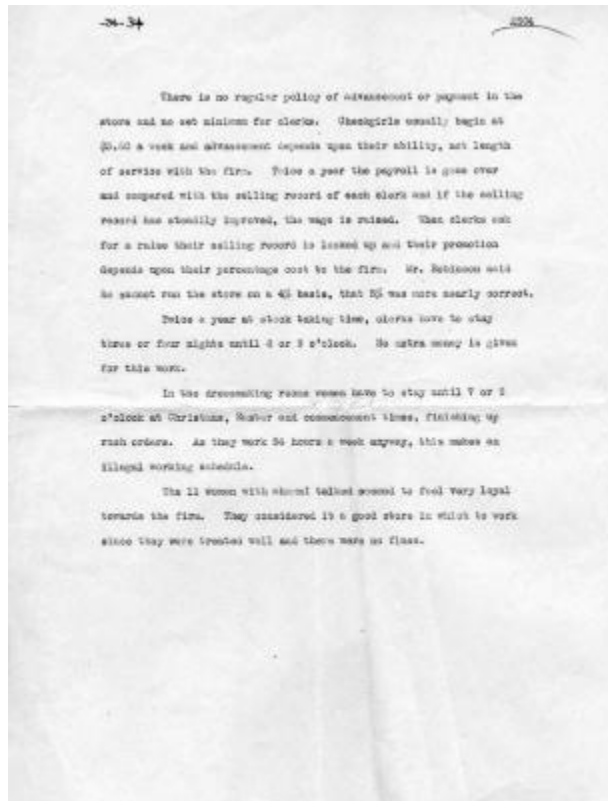


Report on employee hours and wages at McCurdy, Robinson & Co.



A Factory Investigating Commission agent's report on employee hours and wages at McCurdy, Robinson & Co., a store in Rochester, New York. This page, which may be part of a larger document, discusses wages, promotions, overtime hours, and employee attitude toward the company.

Identifier

NYSA_A3000-77_B71_2504_1

Alternate Identifier

DMS ID Number: 143363

Date

circa 1913

Repository

New York State Archives

Source

New York State Archives. Factory Investigating Commission. General Wage Investigation data cards, 1912-1914. A3000-77, Box 71, No. 2504-1.

Rights

This image is provided for education and research purposes. Rights may be reserved. Responsibility for securing permissions to distribute, publish, reproduce or other use rest with the user. For additional information see our [Copyright and Use Statement](#)

More From This Series

General Wage Investigation data cards

Geographic Locations

Monroe County (is associated with)