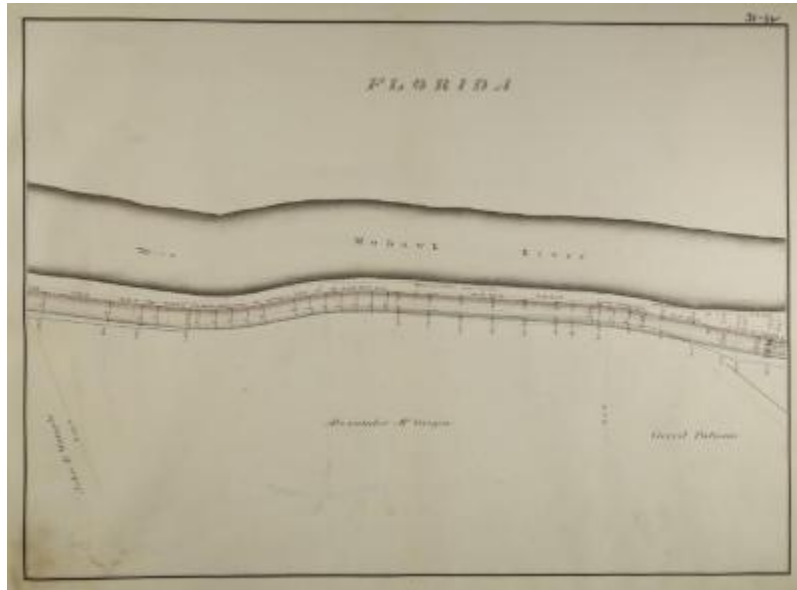


Map of the Erie Canal and Mohawk River running through the Town of Florida in Montgomery County



Map also shows the properties of John E. Wemple, Alexander McGregor and Gerrit Putnum. The name Wemple is mis-spelled Wample on the map.

Identifier

NYSA_B0292-85_V031_32

Date

1869

Repository

New York State Archives

Source

New York State Archives. New York (State). State Engineer and Surveyor. Map and plan books of the location and construction of the state's canal system, [ca. 1827-1905] (bulk 1850-1880) Series B0292-85, Vol. 31, p. 32.

Rights

This image is provided for education and research purposes. Rights may be reserved. Responsibility for securing permissions to distribute, publish, reproduce or other use rest with the user. For additional information see our [Copyright and Use Statement](#)

More From This Series

Map and plan books of the location and construction of the state's canal system