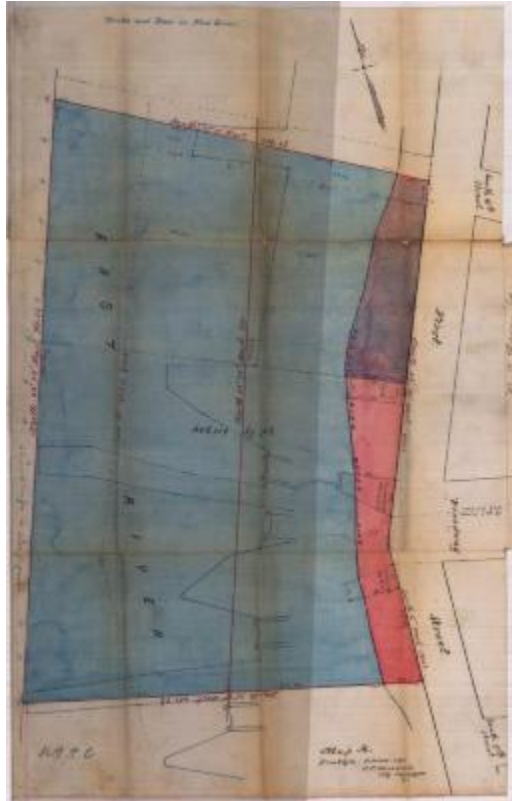


Survey of lands under water for New York Ferry Co.

**Identifier**

NYSA_B2321-11_18791211_New_York_Ferry_Co_01

Date

December 11 1879

Contributor

New York Ferry Co. (Applicant)

Repository

New York State Archives

Source

New York State Archives, New York State Office of General Services Division of Land Utilization lands under water application files, Series B2321, Box 13.

Rights

This image is provided for education and research purposes. Rights may be reserved. Responsibility for securing permissions to distribute, publish, reproduce or other use rest with the user. For additional information see our [Copyright and Use Statement](#)

More From This Series

Lands under water application files

Geographic Locations

Kings County (is associated with)