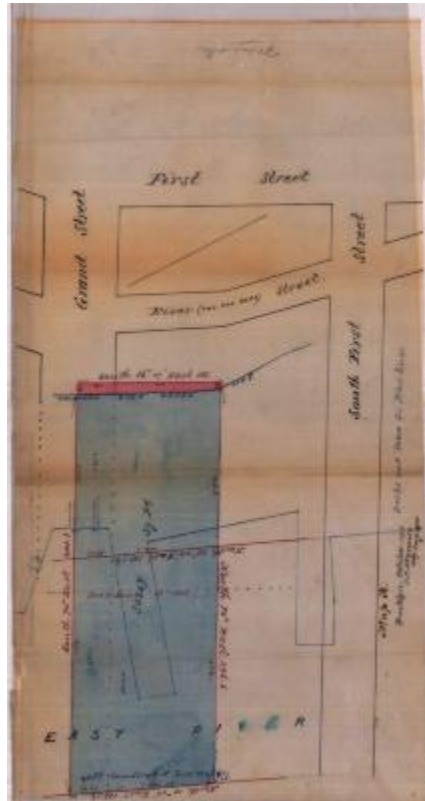


## Survey of lands under water for Eliza Meserole, et al

**Identifier**

NYSA\_B2321-11\_18791212\_Meserole\_02

**Date**

December 12 1879

**Contributor**

Eliza Meserole, et al (Applicant)

**Repository**

New York State Archives

**Source**

New York State Archives, New York State Office of General Services Division of Land Utilization lands under water application files, Series B2321, Box 13.

**Rights**

This image is provided for education and research purposes. Rights may be reserved. Responsibility for securing permissions to distribute, publish, reproduce or other use rest with the user. For additional information see our [Copyright and Use Statement](#)

**More From This Series**

Lands under water application files

**Geographic Locations**

Kings County (is associated with)