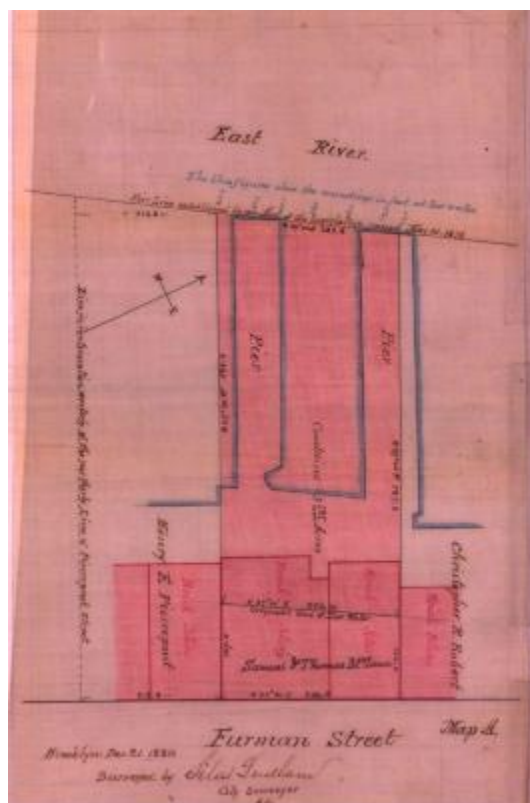


Survey of lands under water for Samuel & Thomas McLean and Franklin Woodruff



Identifier

NYSA_B2321-11_18840610_McLean-Woodruff

Date

June 10 1884

Contributor

Samuel & Thomas McLean and Franklin Woodruff (Applicant)

Repository

New York State Archives

Source

New York State Archives, New York State Office of General Services Division of Land Utilization lands under water application files, Series B2321, Box 15.

Rights

This image is provided for education and research purposes. Rights may be reserved. Responsibility for securing permissions to distribute, publish, reproduce or other use rest with the user. For additional information see our [Copyright and Use Statement](#)

More From This Series

Lands under water application files

Geographic Locations

Kings County (is associated with)