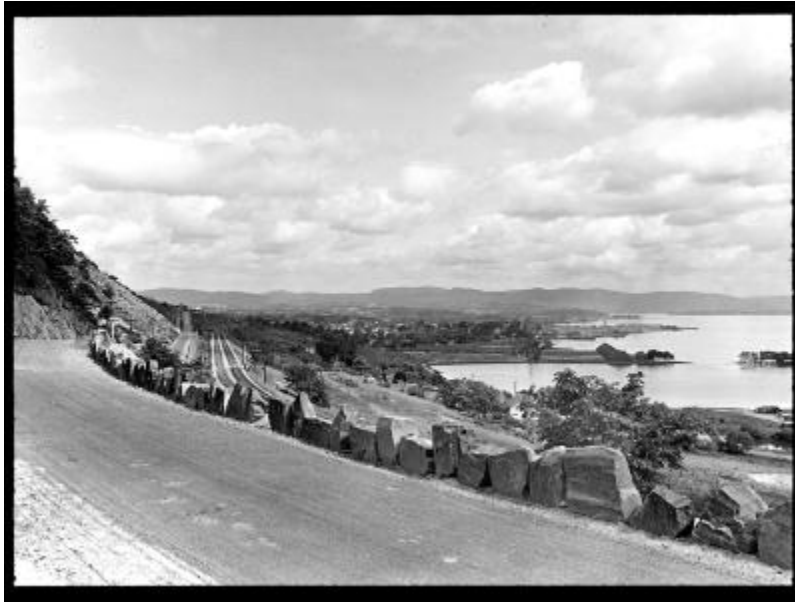


## General View North from State Highway at Haverstraw, New York



View north from a state highway near Haverstraw, New York. The West Shore Railroad runs parallel to the highway on the right. Farther to the right, the village of Haverstraw sits on the banks of the Hudson River. The Hudson Highlands are visible in the background.

**Identifier**

NYSA\_A3045-78\_14948

**Alternate Identifier**

**DMS ID Number:** 144767

**Negative Numbers:** 14948

**Date**

1918

**Repository**

New York State Archives

**Source**

New York State Archives. Education Dept. Division of Visual Instruction. Instructional lantern slides, 1911-1925, A3045-78, Lantern slide neg. 14948.

**Rights**

This image is provided for education and research purposes. Rights may be reserved. Responsibility for securing permissions to distribute, publish, reproduce or other use rest with the user. For additional information see our [Copyright and Use Statement](#)

**More From This Series**

Division of Visual Instruction instructional lantern slides

**Geographic Locations**

Rockland County (is associated with)