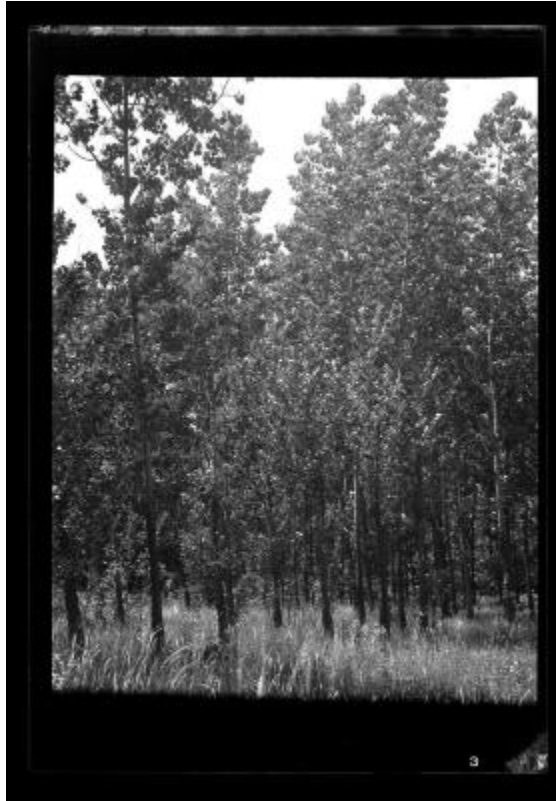


Leafy poplars, Buffalo, Niagara County



View of a stand of lush,leafy poplar trees. This image was created to record forestry and parks activities of the New York State Forest, Fish and Game Commission, Conservation Commission, or Conservation Department.

Identifier

NYSA_14297-87_5161

Alternate Identifier

DMS ID Number: 150990

Date

1934

Repository

New York State Archives

Source

New York State Archives, New York (State). Conservation Dept. Photographic prints and negatives, [ca. 1904-1949], 14297-87, SARA No. 5161.

Rights

This image is provided for education and research purposes. Rights may be reserved. Responsibility for securing permissions to distribute, publish, reproduce or other use rest with the user. For additional information see our [Copyright and Use Statement](#)

More From This Series

Conservation Department photographic prints and negatives

Geographic Locations

Buffalo (is associated with)

Niagara County (is associated with)