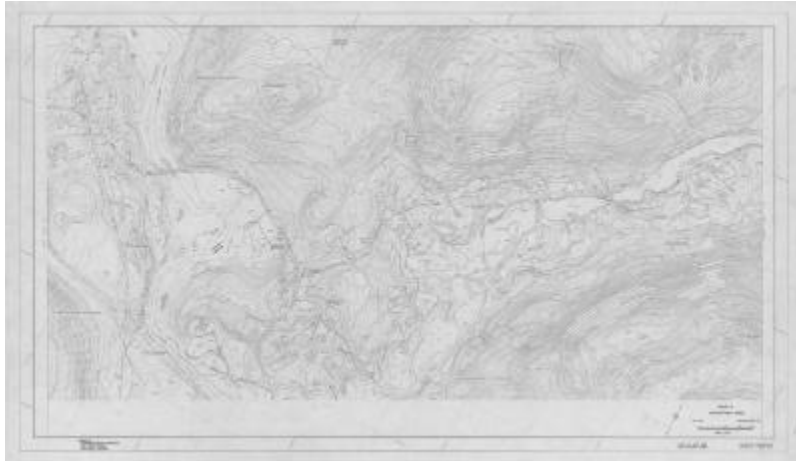


Highway corridor map: Contract CB 133B, Sheet 2B



Highway corridor map covering Route 8, Chestertown-Hague, in Warren County. It was prepared for the New York State Department of Public Works by Engineering Service Corporation.

Identifier

NYSA_B1804-02_Contract_CB_133B_002

Repository

New York State Archives

Source

New York State Archives. New York (State). Dept. of Transportation. Map Information Unit. Highway corridor maps. B1804-02. Box 150, Contract No. CB 133B, Sheet No. 2B.

Rights

This image is provided for education and research purposes. Rights may be reserved. Responsibility for securing permissions to distribute, publish, reproduce or other use rest with the user. For additional information see our [Copyright and Use Statement](#)

More From This Series

Highway corridor maps