



**Letters patent to operate a ferry across the Hudson River
(NYSA_12943-78_1752_V012_p418-p423)**



**Indian deed to Thomas Lane and Joris H. Remsen of land south of
Rensselaer manor, 1750 (NYSA_A0272-78_V14_p086)**



**Indian deed to Jacob Borst and others, 1751 (NYSA_A0272-
78_V14_p116)**



**Indian deed to Captain Johan Jost Herkimer, 1751 (NYSA_A0272-
78_V14_p118)**



**Indian deed to Coenrad Contreman of Canajoharie, 1752
(NYSA_A0272-78_V14_p145)**



**Indian deed to Johannes Lawyer and Phillip Bergh of land near
Schoharie, 1752 (NYSA_A0272-78_V14_p146)**



**Indian deed to Teobalt Yong and Adam Yong of Canajoharie, 1752
(NYSA_A0272-78_V14_p152)**



**Petition of Abraham Kipp and Moses Cantyne to operate a ferry
across the Hudson river, 1752 (NYSA_A0272-78_V14_p167)**



**Certificate of Direck Hagadorn and Lodowig Reikert, 1752
(NYSA_A0272-78_V15_p016a)**



**Indian deed for Arent Stephens, Dow Fonda and others 1752
(NYSA_A0272-78_V15_p018)**



**Indian deed to John Frederick Bauch, Christian Zeke, Johannes
Zeke, Michael Wanner and Johannes Knisker, 1752 (NYSA_A0272-
78_V15_p019)**



**Indian deed to Lambartus Starnbergh, Scoharie county, 1753
(NYSA_A0272-78_V15_p051)**



Indian deed to Johannes Becker and others, 1753 (NYSA_A0272-78_V15_p052)



Petition of Hendrik Peterson and other Mohawk Indians, 1753 (NYSA_A0272-78_V15_p077)



Indian deed to James Stewart and others, 1753 (NYSA_A0272-78_V15_p078)



Bond of William Spencer to former governor George Clarke, 1752 (NYSA_A0272-78_V15_p079a)



Obligations on George Clarke's land in Cherry Valley, 1752 (NYSA_A0272-78_V15_p079b)



Indian deed to Johannes S. Pruyn and Dirck B. Van Sconover, 1754 (NYSA_A0272-78_V15_p100)



**Indian deed to Rudolph Stale and Johan Joost Herckheimer, 1754
(NYSA_A0272-78_V15_p103)**



Schuyler's patent, 1754 (NYSA_A0272-78_V15_p104)



**Indian deed to Johan Joost Schnell and Jacob Timerman, 1754
(NYSA_A0272-78_V15_p105)**



**Indian deed to Johannes Lawyer and others, 1754 (NYSA_A0272-
78_V15_p108)**



**Indian deed to George Zemer and others, 1754 (NYSA_A0272-
78_V15_p109)**



Indian deed to Teady Magin, 1754 (NYSA_A0272-78_V15_p112)



**Deed from Mohawk Indians, October 28, 1754 with certificates dated
October 25, 1754 (NYSA_A0272-78_V15_p123)**



Covenant of William Bauch and Nicholas York, with Jacob Frederick Lawyer, 1754 (NYSA_A0272-78_V15_p125)



Indian deed to George Klock, William Nellis and others, 1754 (NYSA_A0272-78_V15_p126a)



Certificate of survey and payment of John Lewis and Hendrik Fry, 1754 (NYSA_A0272-78_V15_p126b)



Deed from Mohawk Indians, 1751 (NYSA_A0272-78_V26_p127)



Indian deed to William Johnson, 1751 (NYSA_A0272-78_V26_p127a)



Petition of Peter Stewart, for a grant of land pursuant to the royal proclamation, undated (mid 18th century) (NYSA_A0272-78_V40_p001a)



Certificate of Charles Midows, that Peter Stewart served as master's mate on board H. M.'s ship Shannon, 1758 (NYSA_A0272-78_V40_p001c)



Map of Coxeborough Patent. Map #52 (NYSA_A0273-78_52)



Map of Township Cato (No. 3). Map #103 (NYSA_A0273-78_103)



Map of Great Hardenbergh Patent. Map #140 (NYSA_A0273-78_140)



Map of tract of land in the County of Albany on the west side of Lake Conyadarage. Map #155 (NYSA_A0273-78_155)



Map of Jacob Lansing's Patent. Map #169 (NYSA_A0273-78_169)



Map of Tract of land, granted to Borst Grestaez and others. Map #185 (NYSA_A0273-78_185)



Map of the Hoosick Patent. Map #353A (NYSA_A0273-78_353A)



Map of the Hoosick Patent. Map #353B (NYSA_A0273-78_353B)



Map of the Town of White Plains, Westchester County. Map #404D (Copy) (NYS A0273-78_404D)



Map of Onondaga Salt Lake. Map #410 (NYS A0273-78_410)



Map of the Town of Kinderhook. Map #411 (NYS A0273-78_411)



Map of a certain tract of land in Westchester County, commonly called the East Patent. Map #416 (NYS A0273-78_416)



Map of the Town of Coxsackie, Green County. Map #420 (NYS A0273-78_420)



Map of the Township of West Chester. Map #424 (NYS A0273-78_424)



Map of Fort Richmond, Staten Island. Map #427 (NYS A0273-78_427)



Map of lands adjoining Lake Champlain in Clinton and Essex Counties. Map #428 (NYS A0273-78_428)



Map of Phillipstown, Dutchess County. Map #430 (NYSA_A0273-78_430)



Map of the Town of Shawangunk, Ulster County. Map #433 (NYSA_A0273-78_433)



Plan for subdividing the State Lands south of Erie Canal and east of West Street. Map #453 (NYSA_A0273-78_453)



Map of Subdivisions of lands near Church Street, Syracuse. Map #458B (NYSA_A0273-78_458B)



Map of several pieces of land situated in the Town of Bushwick, Kings County. Map #464 (NYSA_A0273-78_464)



Map of Oriskany Patent. Oneida County. Map #465 (NYSA_A0273-78_465)



Map of Tompkins County. Map #471 (NYSA_A0273-78_471)



Profile of the Wallkill river at Walden, Orange County. Map #472A (NYS A0273-78_472A)



Profile of the Wallkill river at Walden, Orange County. Map #472B (NYS A0273-78_472B)



Document with Profile of the Wallkill river at Walden, Orange County. Map #472C (NYS A0273-78_472C)



Lake George from original plot. Map #476A (NYS A0273-78_476A)



Lake George from original plot. Map #476B (NYS A0273-78_476B)



Map of Coarse Salt Lands at Syracuse, N. Y. Map #494 (NYS A0273-78_494)



Bluff Point, in Raquette Lake, Hamilton County. Map #500 (NYS A0273-78_500)



Map of Lake George. 1880. Map #502 (NYS A0273-78_502)



Totten and Crossfield's Purchase, Township 40 showing Raquette Lake. Map #503 (NYSA_A0273-78_503)



Totten and Crossfield's Purchase, Township 40 showing Raquette Lake. Map #503A (NYSA_A0273-78_503A)



Boundary line between the Towns of Exeter and Burlington. Map #507 (NYSA_A0273-78_507)



Map of Hoyt's Salt Block, 1st Ward, Syracuse. Map #508 (NYSA_A0273-78_508)



Corner Location of Benson Township, Jerseyfield Patent and Lawrence Patent. Map #512 (NYSA_A0273-78_512)



Macomb's Purchase. Great Lot No. 1, Township 20, Franklin County. Map #513 (NYSA_A0273-78_513)



Map of State Land in Buffalo, New York. Map #515 (NYSA_A0273-78_515)



Sempronius, Lot No. 61. Cayuga County. Map #521 (NYSA_A0273-78_521)



Map of Township of Lake Pleasant, Hamilton County. Map #587 (NYSA_A0273-78_587)



Map of State Lands, (Ne-ha-sa-ne park) Hamilton and Herkimer Co. Map #588 (NYSA_A0273-78_588)



Survey of land for William and Lewis York, Peter Mebee, Johannis Visger and Hendrick Ten Eyck. Map #617 (NYSA_A0273-78_617)



Survey of Land for Pietrus Van Dreissen and John Van Dreissen. Map #622 (NYSA_A0273-78_622)



Survey of land for Edward Harrison and others. Map #627A (NYSA_A0273-78_627A)



Survey of land for Edward Harrison and others. Map #627B (NYSA_A0273-78_627B)



Map of Northhampton Patent. also the Philip Livingston Patent. Map #639 (NYSA_A0273-78_639)



Survey of land for Lendert Gansevoort and James Stewart. Map #640 (NYSA_A0273-78_640)



Survey of land for Lewis Morris, Johanis Lawyer and others. Map #641 (NYSA_A0273-78_641)



Survey of land for Jacob Borst, Goldsbrow Ranyar and others. Map #643A (NYSA_A0273-78_643A)



Survey of land for Jacob Borst, Goldsbrow Ranyar and others. Map #643B (NYSA_A0273-78_643B)



Survey of land for Jacob Lansing, Cadwallader Colden and others. Map #646 (NYSA_A0273-78_646)



Survey of land for George Klock. Map #647A (NYSA_A0273-78_647A)



Survey of land for George Klock. Map #647B (NYSA_A0273-78_647B)



Survey of land for John Weatherhead, Blenheim, Ury Rightmeyer and others. Map #651 (NYSA_A0273-78_651)



Survey of land for Ury Rightmeyer, 2,000 acres. Map #652 (NYSA_A0273-78_652)



Survey of land for Lawrence Kortright, John Harpur and Arent Bradt. Map #659 (NYSA_A0273-78_659)



Survey of land for Stephen Skinner, Richard Loudon and J. F. Bauch on the Cobus kill. Map #660 (NYSA_A0273-78_660)



Survey of land for Theobald Young, 14,000 acres and John McNeile, 5,928 acres. Map #665 (NYSA_A0273-78_665)



**Survey of land for David Schuyler, 43,000 acres. Map #666
(NYSA_A0273-78_666)**



**Map of various grants south and adjoining map #669. Map #670
(NYSA_A0273-78_670)**



**Part of Map No. #670 including lands of Joseph Goldthwaite and
others. Map #671 (NYSA_A0273-78_671)**



**Map of Long Point on Lake George. Warren County. Map #672
(NYSA_A0273-78_672)**



**Map of lands adjoining Lake George near Fort Ticonderoga. Map
#673 (NYSA_A0273-78_673)**



**Map of first tract of Belvidere of George Croghan's Patent, Otsego
county. Map #680 (NYSA_A0273-78_680)**



**Survey of land for J. N. Mathias, William Bauch, Lawrence Lawyer
and Wm. Wood. Map #681 (NYSA_A0273-78_681)**



**Survey of land for John Becker and J. Eckerson near Huntersfield.
Map #682 (NYSA_A0273-78_682)**



**Survey of land for Arent Bradt ; 2,000 acres, and Walter Franklin;
9,000 acres on the Susquehanna. Map #683 (NYSA_A0273-78_683)**



**Survey of land for Philip Livingston, Arent Stevens, Edward Collins
and others. Map #692A and 692B (NYSA_A0273-78_692A_692B)**



**Long Island in Lake George, with adjacent uplands. Warren county.
Map #693 (NYSA_A0273-78_693)**



Map of Land on upper Hudson river. Map #694 (NYSA_A0273-78_694)



**Map of Kingsborough, granted to James Stewart, 1755. Map #707
(NYSA_A0273-78_707)**



**Survey of land for Jacob Starnberger, George Zimmer, Johannis
Lawyer and others. Map #708 (NYSA_A0273-78_708)**



Survey of land for Martin G. Van Buren, 14,969 acres and 3 pieces for Vincent Mathews and others. Map #715 (NYS A0273-78_715)



Survey of land for John Thompson and others. Map #716 (NYS A0273-78_716)



Survey of land for Alex Turner, 25,000 acres, on the Batten kill, and various others adjoining. Map #717 (NYS A0273-78_717)



Survey of land for John Lawrence, 1000 acres, north of Artillery Patent, Washington county. Map #720. (NYS A0273-78_720)



Map of township of Plattsburgh, 28,000 acres, on Lake Champlain. Map #721 (NYS A0273-78_721)



Map of Jellis Fonda, 40,000 acres, in Oneida county. Map #722 (NYS A0273-78_722)



Map of subdivison of Fonda's Patent, Oneida county. Map #723 (NYS A0273-78_723)



**Delaware river, copied from a map by Metcalfe. Map #725
(NYS A0273-78_725)**



**Protraction of Isle La Motte, Lake Champlain, Vermont. Map #726
(NYS A0273-78_726)**



**Map of DuBois's Tract from a survey by Wm. Cockburn. Map #729
(NYS A0273-78_729)**



**Land of Ph. Livingston, 7,000 acres. Also the Dubois tract. Map #730
(NYS A0273-78_730)**



**Palmer's Purchase on the Sacondaga branch of Hudson river. Map #732
(NYS A0273-78_732)**



**Sketch of land in Steuben township, Oneida county; copy of
Cockburn's survey. Map #735 (NYS A0273-78_735)**



**Townships of Hamden and Sidney with subdivisions. Map #736
(NYS A0273-78_736)**



**Townships of Chenango, Randolph, etc. Map #737 (NYS A0273-
78_737)**



Canadian and Nova Scotia Refugee Lands, Clinton county. Map #744A (NYS_A0273-78_744A)



Canadian and Nova Scotia Refugee Lands, Clinton county. Map #744B (NYS_A0273-78_744B)



Canadian and Nova Scotia Refugee Lands, Clinton county. Map #745A (NYS_A0273-78_745A)



Canadian and Nova Scotia Refugee Lands, Clinton county. Map #745B (NYS_A0273-78_745B)



Canadian and Nova Scotia Refugee Lands, Clinton county. Map #746 (NYS_A0273-78_746)



Map of lands on Lake Champlain near Ticonderoga. Map #747 (NYS_A0273-78_747)



Map of part of the Hoosick Patent, Rensselaer county. Map #748 (NYS_A0273-78_748)



**Map of part of the Hoosick Patent, Rensselaer county; by Beeker.
Map #750 (NYSA_A0273-78_750)**



**Land Patents north from the Batten kill, Washington county. Map
#753 (NYSA_A0273-78_753)**



**Map of Van Bergen's Third Tract and adjacent lands; also Dies's
Manor. Map #760 (NYSA_A0273-78_760)**



**Map of Willsborough and adj. lands on Lake Champlain. Map #761
(NYSA_A0273-78_761)**



**Township of Nettle Field; also Belvedere; Otsego county. Map #763
(NYSA_A0273-78_763)**



**Survey of land for John Garnsey; 1000 acres. Map #765
(NYSA_A0273-78_765)**



**Survey of land for John Garnsey, on Susquehanna river. Map #766
(NYSA_A0273-78_766)**



Map of Mamakating, Sullivan county, granted to Catherine Lodge et al. Map #767A (NYSA_A0273-78_767A)



Map of Mamakating, Sullivan county, granted to Catherine Lodge et al. Map #767B (NYSA_A0273-78_767B)



Map of Lake's Patent, adjoining the Wallumschack Patent. Map #770A (NYSA_A0273-78_770A)



Map of Lake's Patent adjoining Wallumschack Patent. Map #770B (NYSA_A0273-78_770B)



Locations in the Western Country. Map #772 (NYSA_A0273-78_772)



Map of Lynottville, between Goldsboro and Franklin townships. Map #773 (NYSA_A0273-78_773)



Line from outlet of Salmon river, south 60 degrees east, 35 miles; also from near Oneida lake and Wood creek. Map #776 (NYSA_A0273-78_776)



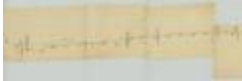
Map of road from Fort George to the river Chazy. Map #777A (NYSA_A0273-78_777A)



Map of road from Fort George to the river Chazy. Map #777B (NYSA_A0273-78_777B)



Map of road from the Oleout to the Cayuga lake. Map #778A (NYS A0273-78_778A)



Map of road from the Oleout to the Cayuga lake. Map #778B (NYS A0273-78_778B)



Map of road from the Oleout to the Cayuga lake. Map #778C (NYS A0273-78_778C)



Map of township of Schenectady. Map #781 (NYS A0273-78_781)



Hasenclever's Patent on Canada creek, Herkimer county, adjoins Cosby's Manor. Map #784 (NYS A0273-78_784)



Map of the town of Marrletown on Esopus creek. Map #786 (NYS A0273-78_786)



Survey of land for Jesse Woodhull, 1,500 acres in Orange county and others. Map #787 (NYS A0273-78_787)



Map of second Township in Benson. Map #788 (NYS A0273-78_788)



Map of Canadian Refugee Lands in Clinton county and Township of Mooers on Lake Champlain. Map #789 (NYS A0273-78_789)



Proposed Town on Niagara river. Map #791 (NYS_A0273-78_791)



Lands near Schroon Lake; Platt's Road Patent; Hoffman, etc. Map #793 (NYS_A0273-78_793)



Map of Gage's Patent with Subdivisions, on Canada creek. Map #796 (NYS_A0273-78_796)



Old Military Tract, Township 6, Clinton county and Township 7, Franklin county. Map #798 (NYS_A0273-78_798)



Old Military Tract, Township 3, Clinton county; granted to Benj. Birdsall. Map #799 (NYS_A0273-78_799)



Map of Lott's Patent, also of Magin's Patent. Map #803 (NYS_A0273-78_803)



Map of land at Niagara Falls, part of Mile Strip. Map #805 (NYS_A0273-78_805)



Map of Hoffman Township on Scaroon lake. Essex county. Map #806 (NYSA_A0273-78_806)



Land of Ezra L'Hommedieu at the head of Seneca lake. Map #809 (NYSA_A0273-78_809)



Map of land adjacent to Scroon lake. Map #810 (NYSA_A0273-78_810)



Lands of Philip Schuyler, with others adjoining. Map #811 (NYSA_A0273-78_811)



Land between Seneca lake and Lake Ontario. Map #813 (NYSA_A0273-78_813)



Same as Map No. 813. Map #814 (NYSA_A0273-78_814)



Lands of W.J. Vredenburg, John Lansing, Jr., and Various others adjacent to Friends Settlement. Map #815 (NYSA_A0273-78_815)



Coxe's Patent, also Hamden Tract, on Susquehanna river. Map #820 (NYSA_A0273-78_820)



Map of land given to the Canadian and Nova Scotia Refugee's. Clinton county. Map #826A (NYSA_A0273-78_826A)



Map of Canadian Refugee Lands, Clinton county. Map #826B (NYSA_A0273-78_826B)



Maps of Corporation Lands at Fort Hunter, Montgomery county. Map #828 (NYSA_A0273-78_828)



Lands and various grants at Fort Hunter, Montgomery county. Map #829 (NYSA_A0273-78_829)



Lysander, No. 1, Oswego and Onondaga counties. Map #831 (NYSA_A0273-78_831)



Hannibal, No. 2, Oswego county. Map #832 (NYSA_A0273-78_832)



Cato, No. 3, Cayuga county. Map #833 (NYSA_A0273-78_833)



Brutus, No. 4, Cayuga county. Map #834 (NYSA_A0273-78_834)



Camillus, No. 5, Onondaga county. Map #835 (NYSA_A0273-78_835)



Cicero, No. 6, Onondaga county. Map #836 (NYSA_A0273-78_836)



Manlius, No. 7, Onondaga county. Map #837 (NYSA_A0273-78_837)



Aurelius, No. 8, Cayuga county. Map #838 (NYSA_A0273-78_838)



Marcellus, No. 9, Onondaga county. Map #839 (NYSA_A0273-78_839)



Pompey, No. 10, Onondaga county. Map #840 (NYSA_A0273-78_840)



Romulus, No. 11, Seneca county. Map #841 (NYSA_A0273-78_841)



Scipio, No. 12, Cayuga county. Map #842 (NYSA_A0273-78_842)



Sempronius, No. 13, Cayuga county. Map #843 (NYSA_A0273-78_843)



Tully, No. 14, Cortland and Onondaga counties. Map #844 (NYSA_A0273-78_844)



Fabius No. 13, Cortland and Onondaga counties. Map #845 (NYSA_A0273-78_845)



Ovid, No. 16, Seneca county. Map #846 (NYSA_A0273-78_846)



Milton, No. 17, Tompkins and Cayuga counties. Map #847 (NYSA_A0273-78_847)



Locke, No. 18, Tompkins and Cayuga counties. Map #848 (NYSA_A0273-78_848)



Homer, No. 19, Cortland county. Map #849 (NYSA_A0273-78_849)



Solon, No. 20, Cortland county. Map #850 (NYSA_A0273-78_850)



Hector, No. 21, Tompkins county. Map #851 (NYSA_A0273-78_851)



Ulysses, No. 22, Tompkins county. Map #852 (NYSA_A0273-78_852)



Dryden, No. 23, Tompkins County. Map #853 (NYSA_A0273-78_853)



Virgil, No. 24, Cortland county. Map #854 (NYSA_A0273-78_854)



Cincinnatus, No. 25, Cortland county. Map #855 (NYSA_A0273-78_855)



Junius, No. 26, Seneca county. Map #856 (NYSA_A0273-78_856)



Galen, No. 27, Wayne county. Map #857 (NYSA_A0273-78_857)



Map of Kayaderosra Patent, Saratoga county. Map #858 (NYSA_A0273-78_858)



Map of Mayfield Patent, Fulton county; 15,000 acres. Map #862 (NYSA_A0273-78_862)



Map of Klock's Purchase, Magin's Tract and Harrison Tract. Map #865A (NYSA_A0273-78_865A)



Map of Klock's Purchase, Magin's Tract and Harrison Tract. Map #865B (NYSA_A0273-78_865B)



Map of part of Mayfield Patent, Fulton county. Map #870 (NYSA_A0273-78_870)



Rudolph Staley's tract, 34,000 acres, also Conradt Frank's tract, 3000 acres at Burnet Field. Map #873 (NYSA_A0273-78_873)



Map of lots in the village of Johnstown, Fulton county. Map #875 (NYSA_A0273-78_875)



Part of William Wood's Patent; forfeited by John Wetherhead. Map #876 (NYSA_A0273-78_876)



Map of Stone Arabia Patent, Alexander's Patent, Depeyster's and Van Slyck's patent. Map #879 (NYSA_A0273-78_879)



Map of the village of Johnstown, Fulton county. Map #880 (NYSA_A0273-78_880)



Map of Chuctinunda town on the Mohawk river; by J. V. Alen. Map #881 (NYSA_A0273-78_881)



Kayaderosera Patent, 8th, 9th and 10th allotment. Part of Saratoga Patent. Map #882 (NYSA_A0273-78_882)



Map of Wallomsack Patent and lands adjoining, Rensselaer Co. Map #883 (NYSA_A0273-78_883)



Map of Wallomsack Patent; also Snyders Patent called Mapletown. Map #884 (NYSA_A0273-78_884)



Kingsborough Patent, Lot No. 399, Fulton County. Map #885 (NYSA_A0273-78_885)



Map of Thomas Wenham's grant on Mohawk river (Oriskany patent); also land north of Cosby's Manor. Map #886A (NYSA_A0273-78_886A)



Map of Thomas Wenham's grant on Mohawk river (Oriskany patent); also land north of Cosby's Manor. Map #886B (NYSA_A0273-78_886B)



Kayaderosera Patent, Allotments Nos. 17 to 25, except No. 21, Saratoga county. Map #888 (NYSA_A0273-78_888)



Kingsborough Patent, Lots 7, 8, 9, and 10, Fulton Co. Map #891A (NYSA_A0273-78_891A)



**Kingsborough Patent, Lots 7, 8, 9, and 10, Fulton Co. Map #891B
(NYSA_A0273-78_891B)**



**Kayaderosera Patent, Line between Lots 11 and 12. Map #892
(NYSA_A0273-78_892)**



**Map of lands on Kinderhook creek, Columbia Co. Map #895
(NYSA_A0273-78_895)**



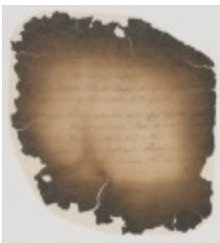
Map of Lake Ontario or Cataraqui, ca. 1800 (NYSA_A0273-78_896)



**Deposition of Christian Schultz relating to operation of a ferry across
the Hudson (NYSA_A1894-78_V077_052)**



**Proposed fees for operation of a ferry across the Hudson
(NYSA_A1894-78_V077_053)**



**Warrant for letters patent for operation of a ferry across the Hudson
(NYSA_A1894-78_V077_054)**



Message from Native Americans to Acting Governor James DeLancey regarding hostilities (NYSA_A1894-78_V080_017)



Names of slave owners recorded by Captain Petrus Bogardus, 1756 (NYSA_A1894-78_V080_100)



List of negro slaves and owners, West Company, Brooklyn, Kings County (NYSA_A1894-78_V080_120)



List of negro slaves and owners, Flatbush, Kings County (NYSA_A1894-78_V080_122)



List of negro slaves and owners, Gravesend, Kings County (NYSA_A1894-78_V080_125)



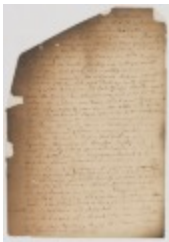
List of negro slaves and owners, Newtown, Queens County (NYSA_A1894-78_V080_129)



List of negro slaves and owners, Jericho and Oysterbay, Queens County (NYSA_A1894-78_V080_130)



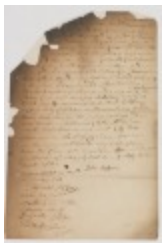
Proclamation regarding Native American hostilities (NYSA_A1894-78_V082_040)



Letter regarding Native American hostilities (NYSA_A1894-78_V082_045)



Deposition of Stephen Jenkins regarding Native American hostilities (NYSA_A1894-78_V082_047)



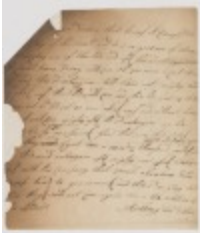
Deposition of John Wisner regarding Native American hostilities (NYSA_A1894-78_V082_048)



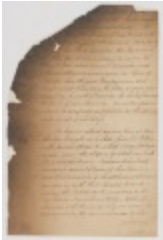
Deposition of Moses Gale regarding Native American hostilities (NYSA_A1894-78_V082_050)



Deposition of Thomas Nottingham regarding Native American hostilities (NYSA_A1894-78_V082_051)



Affidavit of Anthony Van Etten regarding Native American hostilities (NYSA_A1894-78_V082_052)



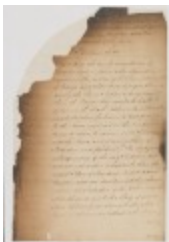
Message from Governor Hardy regarding Native American hostilities (NYSA_A1894-78_V082_054)



Message from Governor Hardy regarding Native American hostilities (NYSA_A1894-78_V082_055)



Message from Governor Hardy regarding Native American hostilities (NYSA_A1894-78_V082_083)



Proclamation for the capture of Samuel Slaughter for killing Native Americans (NYSA_A1894-78_V082_088)



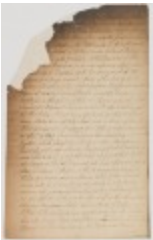
Deposition of James Howell regarding hostilities with the Native Americans (NYSA_A1894-78_V082_098)



Deposition of Charles Clinton regarding hostilities with the Native Americans (NYSA_A1894-78_V082_099)



Deposition of Vincent Mathews regarding hostilities with the Native Americans (NYSA_A1894-78_V082_100)



Deposition of Samuel Willet regarding hostilities with the Native Americans (NYSA_A1894-78_V082_101)



Observations on the state of Ulster and Orange counties regarding Native American hostilities (NYSA_A1894-78_V082_102)



Dissent of Archibald Kennedy against defense budget (NYSA_A1894-78_V082_105)



Account of William Vandenberg, for boarding Native Americans (NYSA_A1894-78_V082_129a)



Petition for officers of the ship King George (NYSA_A1894-78_V083_072)



Petition of Gotlieb Wolhampster and a number of Germans for naturalization (NYSA_A1894-78_V087_094)



Council minutes, July 3, 1752 (NYSA_A1895-78_V023_033-034-035-036)



Probated will of Jacob Walton, 1750 (NYSA_J0038-92_SS2_0001C)



Index to enrolled decrees, 1712-1799 (NYSA_J0066-82_Index)



**Native American - Portion of Indian Deed dated May 29, 1757
(NYSA_PPO_86)**



**Letter from Cornelis van Schel to Jeremias van Rensselaer
(NYSL_sc7079-b01-f10_ncn)**
