



**Civil War muster roll abstract for Elijah Penny of the 4th Heavy Artillery (NYS\_13775-83\_ArtilleryHeavy\_04\_4256\_Penny\_Elijah)**



**Civil War muster roll abstract for Antonio Hernandez of the 8th Cavalry (NYS\_13775-83\_Cavalry\_08\_1430\_Hernandez\_Antonio)**



**Civil War muster roll abstract for Joseph C. Rodriguez of the 9th Infantry (NYS\_13775-83\_Infantry\_009\_1323\_Rodriguez\_Joseph\_C\_p2)**



**Civil War muster roll abstract for Esteban Feliz of the 39th Infantry (NYS\_13775-83\_Infantry\_039\_0988\_Feliz\_Esteban)**



**Civil War muster roll abstract for Emanuel Gomez of the 39th Infantry (NYS\_13775-83\_Infantry\_039\_1229\_Gomez\_Emanuel)**



**Civil Roll muster roll abstract for Jacinto Gomez of the 39th Infantry (NYS\_13775-83\_Infantry\_039\_1230\_Gomez\_Jacinto)**



**Civil War muster roll abstract for Juan Gonzalez of the 39th Infantry (NYS\_13775-83\_Infantry\_039\_1231\_Gonzalez\_Juan)**



**Civil War muster roll abstract for Juan Hernandez of the 39th Infantry  
(NYSA\_13775-83\_Infantry\_039\_1445\_Hernandez\_Juan)**



**Civil Roll muster roll abstract for Juan Rodriguez of the 39th Infantry  
(NYSA\_13775-83\_Infantry\_039\_2869\_Rodriguez\_Juan)**



**Civil War muster roll abstract for Pedro Sanchez of the 39th Infantry  
(NYSA\_13775-83\_Infantry\_039\_2999\_Sanchez\_Pedro)**



**Civil War muster roll abstract for Alfred C. Penny of the 82nd Infantry  
(NYSA\_13775-83\_Infantry\_082\_2467\_Penny\_Alfred\_C)**



**Civil War muster roll abstract for Archibald Penny of the 83rd Infantry  
(NYSA\_13775-83\_Infantry\_083\_1614\_Penny\_Archibald)**



**Civil Roll muster roll abstract for Manuel Garcia of the 84th Infantry  
(NYSA\_13775-83\_Infantry\_084\_0639\_Garcia\_Manuel)**



**Civil Roll muster roll abstract for Harrison Clark of the 125th Infantry  
(NYSA\_13775-83\_Infantry\_125\_0283\_Clark\_Harrison)**



Civil War muster roll abstract for James Johnson of the 127th Infantry (NYSA\_13775-83\_Infantry\_127\_710\_Johnson)



Civil War muster roll abstract for Manuel Herrera of the 178th Infantry (NYSA\_13775-83\_Infantry\_178\_866\_Herrera\_Manuel)



Civil War muster roll abstract for Francisco Pena of the Independent Battalion of Infantry--Les Enfants Perdu (NYSA\_13775-83\_Infantry\_Independent\_Enfants\_0912\_Pena\_Francisco)



Civil Roll muster roll abstract for Jasper Towns of the 31st United States Colored Troops (NYSA\_13775-83\_USCT\_0031\_1230\_Towns\_Jasper)



Civil Roll muster roll abstract for Abram Vroman of the 31st United States Colored Troops (NYSA\_13775-83\_USCT\_0031\_1269\_Vroman\_Abram)



Civil War muster roll abstract for Elisha Odell of the 20th Regiment, United States Colored Troops (NYSA\_13775-83\_USCT\_20\_Odell\_Elisha)



Civil War muster roll abstract for Henry Oliver of the 20th Regiment, United States Colored Troops (NYSA\_13775-83\_USCT\_20\_Oliver\_Henry)



Civil War muster roll abstract for Richard Oliver of the 20th Regiment, United States Colored Troops (NYSA\_13775-83\_USCT\_20\_Oliver\_Richard)



**Civil War muster roll abstract for Samuel Oliver of the 20th Regiment, United States Colored Troops (NYSA\_13775-83\_USCT\_20\_Oliver\_Samuel)**



**Civil War muster roll abstract for William H. Oliver of the 20th Regiment, United States Colored Troops (NYSA\_13775-83\_USCT\_20\_Oliver\_William\_H)**



**Civil War muster roll abstract for William Oldstead of the 20th Regiment, United States Colored Troops (NYSA\_13775-83\_USCT\_20\_Olmstead\_William)**



**Civil War muster roll abstract for Charles Ongway of the 20th Regiment, United States Colored Troops (NYSA\_13775-83\_USCT\_20\_Ongway\_Charles)**



**Civil War muster roll abstract for Peter Osborn of the 20th Regiment, United States Colored Troops (NYSA\_13775-83\_USCT\_20\_Osborn\_Peter)**



**Civil War muster roll abstract for Charles Owens of the 20th Regiment, United States Colored Troops (NYSA\_13775-83\_USCT\_20\_Owens\_Charles)**



**Map of Township Cato (No. 3). Map #103 (NYSA\_A0273-78\_103)**



**Map of Township Pompey (No. 10). Map #110 (NYSA\_A0273-78\_110)**



**Map of Great Hardenbergh Patent. Map #140 (NYSA\_A0273-78\_140)**



**Map of the Town of White Plains, Westchester County. Map #404D (Copy) (NYSA\_A0273-78\_404D)**



**Map of Onondaga Salt Lake. Map #410 (NYSA\_A0273-78\_410)**



**Map of the Town of Kinderhook. Map #411 (NYSA\_A0273-78\_411)**



**Map of the Town of Coxsackie, Green County. Map #420 (NYSA\_A0273-78\_420)**



**Map of the Township of West Chester. Map #424 (NYSA\_A0273-78\_424)**



**Map of Fort Richmond, Staten Island. Map #427 (NYSA\_A0273-78\_427)**



**Map of lands adjoining Lake Champlain in Clinton and Essex Counties. Map #428 (NYSA\_A0273-78\_428)**



**Map of Phillipstown, Dutchess County. Map #430 (NYSA\_A0273-78\_430)**



**Map of the Town of Shawangunk, Ulster County. Map #433 (NYSA\_A0273-78\_433)**



**Plan for subdividing the State Lands south of Erie Canal and east of West Street. Map #453 (NYSA\_A0273-78\_453)**



**Map of Subdivisions of lands near Church Street, Syracuse. Map #458B (NYSA\_A0273-78\_458B)**



**Map of several pieces of land situated in the Town of Bushwick, Kings County. Map #464 (NYSA\_A0273-78\_464)**



**Map of Oriskany Patent. Oneida County. Map #465 (NYSA\_A0273-78\_465)**



**Map of Tompkins County. Map #471 (NYSA\_A0273-78\_471)**



**Profile of the Wallkill river at Walden, Orange County. Map #472A  
(NYS A0273-78\_472A)**



**Profile of the Wallkill river at Walden, Orange County. Map #472B  
(NYS A0273-78\_472B)**



**Document with Profile of the Wallkill river at Walden, Orange County.  
Map #472C (NYS A0273-78\_472C)**



**Lake George from original plot. Map #476A (NYS A0273-78\_476A)**



**Lake George from original plot. Map #476B (NYS A0273-78\_476B)**



**Map of Coarse Salt Lands at Syracuse, N. Y. Map #494 (NYS A0273-78\_494)**



**Bluff Point, in Raquette Lake, Hamilton County. Map #500  
(NYS A0273-78\_500)**



**Map of Lake George. 1880. Map #502 (NYS A0273-78\_502)**



**Totten and Crossfield's Purchase, Township 40 showing Raquette Lake. Map #503 (NYSA\_A0273-78\_503)**

---



**Totten and Crossfield's Purchase, Township 40 showing Raquette Lake. Map #503A (NYSA\_A0273-78\_503A)**

---



**Boundary line between the Towns of Exeter and Burlington. Map #507 (NYSA\_A0273-78\_507)**

---



**Map of Hoyt's Salt Block, 1st Ward, Syracuse. Map #508 (NYSA\_A0273-78\_508)**

---



**Corner Location of Benson Township, Jerseyfield Patent and Lawrence Patent. Map #512 (NYSA\_A0273-78\_512)**

---



**Macomb's Purchase. Great Lot No. 1, Township 20, Franklin County. Map #513 (NYSA\_A0273-78\_513)**

---



**Map of State Land in Buffalo, New York. Map #515 (NYSA\_A0273-78\_515)**

---





**Sempronius, Lot No. 61. Cayuga County. Map #521 (NYSA\_A0273-78\_521)**



**Map of Township of Lake Pleasant, Hamilton County. Map #587 (NYSA\_A0273-78\_587)**



**Map of State Lands, (Ne-ha-sa-ne park) Hamilton and Herkimer Co. Map #588 (NYSA\_A0273-78\_588)**



**Survey of Land for Pietrus Van Dreissen and John Van Dreissen. Map #622 (NYSA\_A0273-78\_622)**



**Survey of land for Edward Harrison and others. Map #627A (NYSA\_A0273-78\_627A)**



**Survey of land for Edward Harrison and others. Map #627B (NYSA\_A0273-78\_627B)**



**Map of Northhampton Patent. also the Philip Livingston Patent. Map #639 (NYSA\_A0273-78\_639)**



**Survey of land for Lendert Gansevoort and James Stewart. Map #640 (NYSA\_A0273-78\_640)**



**Map of various grants south and adjoining map #669. Map #670 (NYSA\_A0273-78\_670)**



**Part of Map No. #670 including lands of Joseph Goldthwaite and others. Map #671 (NYSA\_A0273-78\_671)**



**Map of Long Point on Lake George. Warren County. Map #672 (NYSA\_A0273-78\_672)**



**Map of lands adjoining Lake George near Fort Ticonderoga. Map #673 (NYSA\_A0273-78\_673)**



**Map of first tract of Belvidere of George Croghan's Patent, Otsego county. Map #680 (NYSA\_A0273-78\_680)**



**Survey of land for Philip Livingston, Arent Stevens, Edward Collins and others. Map #692A and 692B (NYSA\_A0273-78\_692A\_692B)**



**Long Island in Lake George, with adjacent uplands. Warren county. Map #693 (NYSA\_A0273-78\_693)**



**Map of Land on upper Hudson river. Map #694 (NYSA\_A0273-78\_694)**

---



**Survey of land for Alex Turner, 25,000 acres, on the Batten kill, and various others adjoining. Map #717 (NYSA\_A0273-78\_717)**

---



**Survey of land for John Lawrence, 1000 acres, north of Artillery Patent, Washington county. Map #720. (NYSA\_A0273-78\_720)**

---



**Map of township of Plattsburgh, 28,000 acres, on Lake Champlain. Map #721 (NYSA\_A0273-78\_721)**

---



**Map of Jellis Fonda, 40,000 acres, in Oneida county. Map #722 (NYSA\_A0273-78\_722)**

---



**Map of subdivison of Fonda's Patent, Oneida county. Map #723 (NYSA\_A0273-78\_723)**

---



**Delaware river, copied from a map by Metcalfe. Map #725 (NYSA\_A0273-78\_725)**

---



**Protraction of Isle La Motte, Lake Champlain, Vermont. Map #726  
(NYSA\_A0273-78\_726)**



**Palmer's Purchase on the Sacondaga branch of Hudson river. Map #732 (NYSA\_A0273-78\_732)**



**Sketch of land in Steuben township, Oneida county; copy of  
Cockburn's survey. Map #735 (NYSA\_A0273-78\_735)**



**Townships of Hamden and Sidney with subdivisions. Map #736  
(NYSA\_A0273-78\_736)**



**Townships of Chenango, Randolph, etc. Map #737 (NYSA\_A0273-  
78\_737)**



**Canadian and Nova Scotia Refugee Lands, Clinton county. Map  
#744A (NYSA\_A0273-78\_744A)**



**Canadian and Nova Scotia Refugee Lands, Clinton county. Map  
#744B (NYSA\_A0273-78\_744B)**



**Canadian and Nova Scotia Refugee Lands, Clinton county. Map  
#745A (NYSA\_A0273-78\_745A)**



**Canadian and Nova Scotia Refugee Lands, Clinton county. Map  
#745B (NYSA\_A0273-78\_745B)**



**Canadian and Nova Scotia Refugee Lands, Clinton county. Map #746  
(NYSA\_A0273-78\_746)**

---



**Map of lands on Lake Champlain near Ticonderoga. Map #747  
(NYSA\_A0273-78\_747)**

---



**Map of part of the Hoosick Patent, Rensselaer county. Map #748  
(NYSA\_A0273-78\_748)**

---



**Map of part of the Hoosick Patent, Rensselaer county; by Beeker.  
Map #750 (NYSA\_A0273-78\_750)**

---



**Land Patents north from the Batten kill, Washington county. Map  
#753 (NYSA\_A0273-78\_753)**

---



**Map of Willsborough and adj. lands on Lake Champlain. Map #761  
(NYSA\_A0273-78\_761)**

---



**Township of Nettle Field; also Belvedere; Otsego county. Map #763  
(NYS\_A0273-78\_763)**

---



**Survey of land for John Garnsey; 1000 acres. Map #765  
(NYS\_A0273-78\_765)**

---



**Survey of land for John Garnsey, on Susquehanna river. Map #766  
(NYS\_A0273-78\_766)**

---



**Map of Mamakating, Sullivan county, granted to Catherine Lodge et  
al. Map #767A (NYS\_A0273-78\_767A)**

---



**Map of Mamakating, Sullivan county, granted to Catherine Lodge et  
al. Map #767B (NYS\_A0273-78\_767B)**

---



**Map of Lake's Patent, adjoining the Wallumschack Patent. Map #770A  
(NYS\_A0273-78\_770A)**

---



**Map of Lake's Patent adjoining Wallumschack Patent. Map #770B  
(NYS\_A0273-78\_770B)**

---



**Locations in the Western Country. Map #772 (NYS\_A0273-78\_772)**

---



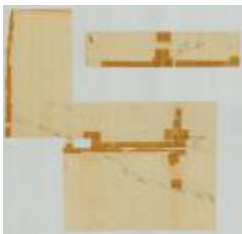
**Map of Lynottville, between Goldsboro and Franklin townships. Map #773 (NYSA\_A0273-78\_773)**



**Line from outlet of Salmon river, south 60 degrees east, 35 miles; also from near Oneida lake and Wood creek. Map #776 (NYSA\_A0273-78\_776)**



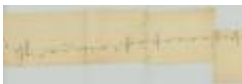
**Map of road from Fort George to the river Chazy. Map #777A (NYSA\_A0273-78\_777A)**



**Map of road from Fort George to the river Chazy. Map #777B (NYSA\_A0273-78\_777B)**



**Map of road from the Oleout to the Cayuga lake. Map #778A (NYSA\_A0273-78\_778A)**



**Map of road from the Oleout to the Cayuga lake. Map #778B (NYSA\_A0273-78\_778B)**



**Map of road from the Oleout to the Cayuga lake. Map #778C (NYSA\_A0273-78\_778C)**



**Map of township of Schenectady. Map #781 (NYSA\_A0273-78\_781)**



**Hasenclever's Patent on Canada creek, Herkimer county, adjoins Cosby's Manor. Map #784 (NYSA\_A0273-78\_784)**



**Map of the town of Marletown on Esopus creek. Map #786 (NYSA\_A0273-78\_786)**



**Map of second Township in Benson. Map #788 (NYSA\_A0273-78\_788)**

---



**Map of Canadian Refugee Lands in Clinton county and Township of Mooers on Lake Champlain. Map #789 (NYSA\_A0273-78\_789)**

---



**Proposed Town on Niagara river. Map #791 (NYSA\_A0273-78\_791)**

---



**Lands near Schroon Lake; Platt's Road Patent; Hoffman, etc. Map #793 (NYSA\_A0273-78\_793)**

---



**Map of Gage's Patent with Subdivisions, on Canada creek. Map #796 (NYSA\_A0273-78\_796)**

---



**Old Military Tract, Township 6, Clinton county and Township 7, Franklin county. Map #798 (NYSA\_A0273-78\_798)**

---



**Old Military Tract, Township 3, Clinton county; granted to Benj. Birdsall. Map #799 (NYSA\_A0273-78\_799)**

---





**Map of Lott's Patent, also of Magin's Patent. Map #803 (NYSA\_A0273-78\_803)**

---



**Map of land at Niagara Falls, part of Mile Strip. Map #805 (NYSA\_A0273-78\_805)**

---



**Map of Hoffman Township on Scaroon lake. Essex county. Map #806 (NYSA\_A0273-78\_806)**

---



**Land of Ezra L'Hommedieu at the head of Seneca lake. Map #809 (NYSA\_A0273-78\_809)**

---



**Map of land adjacent to Scroon lake. Map #810 (NYSA\_A0273-78\_810)**

---



**Lands of Philip Schuyler, with others adjoining. Map #811 (NYSA\_A0273-78\_811)**

---



**Land between Seneca lake and Lake Ontario. Map #813 (NYSA\_A0273-78\_813)**

---



**Same as Map No. 813. Map #814 (NYSA\_A0273-78\_814)**

---



**Lands of W.J. Vredenburgh, John Lansing, Jr., and Various others adjacent to Friends Settlement. Map #815 (NYSA\_A0273-78\_815)**

---



**Coxe's Patent, also Hamden Tract, on Susquehanna river. Map #820  
(NYSA\_A0273-78\_820)**

---



**Map of land given to the Canadian and Nova Scotia Refugee's.  
Clinton county. Map #826A (NYSA\_A0273-78\_826A)**

---



**Map of Canadian Refugee Lands, Clinton county. Map #826B  
(NYSA\_A0273-78\_826B)**

---



**Maps of Corporation Lands at Fort Hunter, Montgomery county. Map  
#828 (NYSA\_A0273-78\_828)**

---



**Lands and various grants at Fort Hunter, Montgomery county. Map  
#829 (NYSA\_A0273-78\_829)**

---



**Lysander, No. 1, Oswego and Onondaga counties. Map #831  
(NYSA\_A0273-78\_831)**

---



**Hannibal, No. 2, Oswego county. Map #832 (NYSA\_A0273-78\_832)**

---



**Cato, No. 3, Cayuga county. Map #833 (NYSA\_A0273-78\_833)**

---



**Brutus, No. 4, Cayuga county. Map #834 (NYSA\_A0273-78\_834)**

---



**Camillus, No. 5, Onondaga county. Map #835 (NYSA\_A0273-78\_835)**

---



**Cicero, No. 6, Onondaga county. Map #836 (NYSA\_A0273-78\_836)**

---



**Manlius, No. 7, Onondaga county. Map #837 (NYSA\_A0273-78\_837)**

---



**Aurelius, No. 8, Cayuga county. Map #838 (NYSA\_A0273-78\_838)**

---



**Marcellus, No. 9, Onondaga county. Map #839 (NYSA\_A0273-78\_839)**

---



**Pompey, No. 10, Onondaga county. Map #840 (NYSA\_A0273-78\_840)**

---



**Romulus, No. 11, Seneca county. Map #841 (NYS A0273-78\_841)**

---



**Scipio, No. 12, Cayuga county. Map #842 (NYS A0273-78\_842)**

---



**Sempronius, No. 13, Cayuga county. Map #843 (NYS A0273-78\_843)**

---



**Tully, No. 14, Cortland and Onondaga counties. Map #844 (NYS A0273-78\_844)**

---



**Fabius No. 13, Cortland and Onondaga counties. Map #845 (NYS A0273-78\_845)**

---



**Ovid, No. 16, Seneca county. Map #846 (NYS A0273-78\_846)**

---



**Milton, No. 17, Tompkins and Cayuga counties. Map #847 (NYS A0273-78\_847)**

---



**Locke, No. 18, Tompkins and Cayuga counties. Map #848  
(NYSA\_A0273-78\_848)**

---



**Homer, No. 19, Cortland county. Map #849 (NYSA\_A0273-78\_849)**

---



**Solon, No. 20, Cortland county. Map #850 (NYSA\_A0273-78\_850)**

---



**Hector, No. 21, Tompkins county. Map #851 (NYSA\_A0273-78\_851)**

---



**Ulysses, No. 22, Tompkins county. Map #852 (NYSA\_A0273-78\_852)**

---



**Dryden, No. 23, Tompkins County. Map #853 (NYSA\_A0273-78\_853)**

---



**Virgil, No. 24, Cortland county. Map #854 (NYSA\_A0273-78\_854)**

---



**Cincinnatus, No. 25, Cortland county. Map #855 (NYSA\_A0273-78\_855)**

---



**Junius, No. 26, Seneca county. Map #856 (NYSA\_A0273-78\_856)**

---



**Galen, No. 27, Wayne county. Map #857 (NYSA\_A0273-78\_857)**

---



**Map of Kayaderosra Patent, Saratoga county. Map #858 (NYSA\_A0273-78\_858)**

---



**Map of Mayfield Patent, Fulton county; 15,000 acres. Map #862 (NYSA\_A0273-78\_862)**

---



**Map of part of Mayfield Patent, Fulton county. Map #870 (NYSA\_A0273-78\_870)**

---



**Rudolph Staley's tract, 34,000 acres, also Conradt Frank's tract, 3000 acres at Burnet Field. Map #873 (NYSA\_A0273-78\_873)**



**Map of lots in the village of Johnstown, Fulton county. Map #875 (NYSA\_A0273-78\_875)**



**Part of William Wood's Patent; forfeited by John Wetherhead. Map #876 (NYSA\_A0273-78\_876)**



**Map of Stone Arabia Patent, Alexander's Patent, Depeyster's and Van Slyck's patent. Map #879 (NYSA\_A0273-78\_879)**



**Map of the village of Johnstown, Fulton county. Map #880 (NYSA\_A0273-78\_880)**



**Map of Chuctinunda town on the Mohawk river; by J. V. Alen. Map #881 (NYSA\_A0273-78\_881)**



**Kayaderosera Patent, 8th, 9th and 10th allotment. Part of Saratoga Patent. Map #882 (NYSA\_A0273-78\_882)**



**Map of Wallomsack Patent and lands adjoining, Rensselaer Co. Map #883 (NYSA\_A0273-78\_883)**

---



**Map of Wallomsack Patent; also Snyders Patent called Mapletown. Map #884 (NYSA\_A0273-78\_884)**

---



**Kingsborough Patent, Lot No. 399, Fulton County. Map #885 (NYSA\_A0273-78\_885)**

---



**Map of Thomas Wenham's grant on Mohawk river (Oriskany patent); also land north of Cosby's Manor. Map #886A (NYSA\_A0273-78\_886A)**

---



**Map of Thomas Wenham's grant on Mohawk river (Oriskany patent); also land north of Cosby's Manor. Map #886B (NYSA\_A0273-78\_886B)**

---



**Kayaderosera Patent, Allotments Nos. 17 to 25, except No. 21, Saratoga county. Map #888 (NYSA\_A0273-78\_888)**

---



**Kingsborough Patent, Lots 7, 8, 9, and 10, Fulton Co. Map #891A (NYSA\_A0273-78\_891A)**

---





**Kingsborough Patent, Lots 7, 8, 9, and 10, Fulton Co. Map #891B  
(NYSA\_A0273-78\_891B)**

---



**Kayaderosera Patent, Line between Lots 11 and 12. Map #892  
(NYSA\_A0273-78\_892)**

---



**Return of Civil War Officers and Enlisted Men Who Have Been in the  
Military or Naval Service (NYSA\_A0389-78\_2\_V5)**

---



**Return of Civil War Officers and Enlisted Men Who Have Died While  
in Service, Volume 6, pages 665-666 (NYSA\_A0389-78\_3\_V6\_p665-  
666)**

---



**Civil War. Bounty Payment Bond Issued by NYS to Reduce Debt.  
(NYSA\_A1449-78)**

---



**Education. Nursing class (NYSA\_A3045-78\_242)**

---



**France - "Napoleon Crossing the Alps" by Jacques-Louis David  
(NYSA\_A3045-78\_5467)**

---



**General Ulysses S. Grant and staff (NYSA\_A3045-78\_15182)**

---



**Italy. Paestum. Temple of Neptune (Poseidon) (NYSA\_A3045-78\_A7582)**

---



**Niagara Falls. Old Terrapin Tower and Horseshoe Falls. (NYSA\_A3045-78\_A10401)**

---



**Lumber slide, feeder and lumbermen (NYSA\_A3045-78\_D47\_AZ192)**

---



**Loggers. Unidentified print of two men near a timber conveyor structure (NYSA\_A3045-78\_D47\_AZ218)**

---



**N.Y. Map Catskill Mts (NYSA\_A3045-78\_D47\_Cc)**

---



**New York Catskill Mountains from North Mountain (NYSA\_A3045-78\_D47\_CcA3)**

---



**New York Catskill Mountains, panorama northeast from Fly Mountain (NYSA\_A3045-78\_D47\_CcA4)**

---



**N.Y. Catskill Mts. Kaaterskill Falls. Winter. (NYSA\_A3045-78\_D47\_CcK2)**

---



**New York Lake Champlain bluff point, Singing Sands (NYSA\_A3045-78\_D47\_ChB6)**

---



**Hop City, 3 miles from Cooperstown (NYSA\_A3045-78\_D47\_CpY)**

---



**Group of Hop Pickers (NYSA\_A3045-78\_D47\_CpY2)**

---



**Sheep on the Green, Central Park, New York City (NYSA\_A3045-78\_D47\_NC56)**

---



**N.Y. Feeding the Swans. (NYSA\_A3045-78\_D47\_NC57)**

---



**N.Y. New York City. Farragut Statue (St. Gaudens) (NYS\_A3045-78\_D47\_NE3)**



**N.Y., New York City. Peter Cooper Monument (St. Gaudens) Cooper Union (NYS\_A3045-78\_D47\_NE24)**



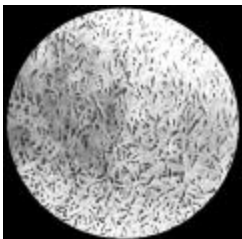
**New York City. Franklin Statue. Printing House Square. (NYS\_A3045-78\_D47\_NE34)**



**N.Y. New York. Horace Greeley Statue by J.Q.A. Ward, Printing House Square (NYS\_A3045-78\_D47\_NE36)**



**N.Y. Dewitt Clinton Statue, Chamber of Commerce Building (NYS\_A3045-78\_D47\_NE211)**



**Hyaline cartilage (NYS\_A3045-78\_OHH)**



Canal Lock. Little Falls, N. Y. (NYS A3045-78\_X\_921\_Color)

---



Larva of Green Maple Worm. *Xylina Antennata* (NYS A3045-78\_X\_1005\_Color)

---



Man driving an oxen cart (NYS A3045-78\_X\_2911)

---



Union General Winfield Scott Hancock. (NYS A3045-78\_X\_2981)

---



Oliver Wendell Holmes, Sr. (NYS A3045-78\_X\_2984)

---



Ontario County Courthouse, Canandaigua (NYS A3045-78\_X\_3117)

---



Erie canal aqueduct near Genesee River, Rochester (NYS A3045-78\_X\_3118)

---



Triple Cascade and Rainbow Fall. Watkins Glen, N. Y. (NYS A3045-78 X 3272 Color)



Panorama of southwest showing Upper Gorge, Middle Valley and Erie Railroad Bridge. Portage, N. Y. (NYS A3045-78 X 3529 Color)



Home of the muskrat. New Berlin, N. Y. (NYS A3045-78 X 3798 Color)



Marsh. New Berlin, N. Y. (NYS A3045-78 X 3799 Color)



Muskrat lodge. Chatham, N. Y. (NYS A3045-78 X 3800 Color)



Muskrat trap (NYS A3045-78 X 3802 Color)



Muskrat burrow opened. Chatham, N. Y. (NYS A3045-78 X 3803 Color)



Central New York landscape (NYS A3045-78 X 3863 Color)

---



Mountain house. Pottersville, N. Y. (NYS A3045-78 X 4028 Color)

---



Black swallowtail butterfly (papilio polyvocus) (NYS A3045-78 X 6059 Color)

---



Painted beauty butterfly (NYS A3045-78 X 6072 Color)

---



Old coach owned by General Vischer and used by General Lafayette (NYS A3045-78 X 6233)

---



Frederick Douglass (NYS A3045-78 X 6430)

---



A coconut palm, Musa Isle, Miami (NYS A3045-78 X 6710)

---



**Old Capitol from southeast. Albany, N.Y. (NYS\_A3045-78\_X\_8002)**

---



**River front mansion with servants house near Fredericksburg, Virginia (NYS\_A3045-78\_X\_10192)**

---



**Color Guard at West Point (NYS\_A3045-78\_X\_10573)**

---



**Setting up exercise. Peekskill, N. Y. (NYS\_A3045-78\_X\_10623)**

---



**Art gallery in Delaware Park. Buffalo, N. Y. (NYS\_A3045-78\_X\_12488)**

---



**A small spring near Kinderhook Creek Bridge in the vicinity of Malden Bridge, N. Y. (NYS\_A3045-78\_X\_14966\_Color)**

---



**Magnolia blossom (NYS\_A3045-78\_X\_18790\_Color)**

---





**Black Bear Mt. Effect of Forest Fire (NYSA\_A3045\_D47\_AZ428)**



**Crab Island from Hotel Champlain (NYSA\_A3045\_D47\_ChC3)**



**Fort Ticonderoga. Panorama of Ruins from South, Old Ditch in Foreground (NYSA\_A3045\_D47\_TiG41)**



**Account submitted by the town of Patterson, Putnam County, detailing monies expended and men furnished during the Civil War (NYSA\_A4114-78\_B3\_PutnamCounty\_Patterson)**



**Register of United States Colored Troops who filed claims against the federal government (NYSA\_A4160-78)**



**Map of the Enlargement of the Erie Canal. Section 50 (NYSA\_B0292-85\_V054\_50)**



**Map of the Enlargement of the Erie Canal. Section 51 (NYSA\_B0292-85\_V054\_52)**



**Survey of lands under water for Town of Germantown (NYSA\_B2321-11\_18660207\_Town\_of\_Germantown)**



**Survey of lands under water for Blandina B. & William L. Andrews (NYSA\_B2321-11\_18660519\_B\_and\_W\_Andrews)**



**Survey of lands under water for Albert N. Crystie (NYSA\_B2321-11\_18660519\_Crystie\_01)**



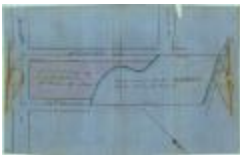
**Survey of lands under water for Albert N. Crystie (NYSA\_B2321-11\_18660519\_Crystie\_02)**



**Survey of lands under water for Loring Andrews (NYSA\_B2321-11\_18660519\_L\_Andrews)**



**Survey of lands under water for Lewis G. Morris (NYSA\_B2321-11\_18660519\_Morris)**



**Survey of lands under water for John D. Perrin (NYSA\_B2321-11\_18660519\_Perrin)**



**Survey of lands under water for William Brown (NYSA\_B2321-11\_18660626\_Brown)**



**Survey of lands under water for Ann F. Cameron (NYSA\_B2321-11\_18661003\_Cameron)**



**Survey of lands under water for Charlotte Clock (NYSA\_B2321-11\_18661003\_Clock)**



**Survey of lands under water for Jonathan Godfrey, Warren D. Gookin & William W. Wakeman (NYSA\_B2321-11\_18661003\_Godfrey-Gookin-Wakeman)**



**Survey of lands under water for Gabriel Kent (NYSA\_B2321-11\_18661003\_Kent)**



**Survey of lands under water for John Bigler (NYSA\_B2321-11\_18661113\_Bigler)**



**Survey of lands under water for Heirs of William Denning (NYSA\_B2321-11\_18661113\_Denning)**



**Survey of lands under water for William F. Havemeyer (NYSA\_B2321-11\_18661113\_Havemeyer)**



**Survey of lands under water for Benjamin L. Swan, Jr. (NYSA\_B2321-11\_18661113\_Swan)**



**Survey of lands under water for Robert C. Bell (NYSA\_B2321-11\_18661204\_Bell\_01)**



**Survey of lands under water for Robert C. Bell (NYSA\_B2321-11\_18661204\_Bell\_02)**



**Survey of lands under water for Oswald Cammann (NYSA\_B2321-11\_18661227\_Cammann)**



**Survey of lands under water for Stephen C. R. Cumming (NYSA\_B2321-11\_18661227\_Cumming)**



**Survey of lands under water for William B. French (NYSA\_B2321-11\_18661227\_French)**



**Survey of lands under water for John I. Gaul (NYSA\_B2321-11\_18661227\_Gaul\_01)**



**Survey of lands under water for John I. Gaul (NYSA\_B2321-11\_18661227\_Gaul\_02)**



**Survey of lands under water for George C. Hubbel (NYSA\_B2321-11\_18661227\_Hubbel)**



**Survey of lands under water for John B. James (NYSA\_B2321-11\_18661227\_James)**

---



**Survey of lands under water for Catherine A. Robinson (NYSA\_B2321-11\_18661227\_Robinson)**

---