



[Mount] Marcy Trip
(NYSL_SC19469_B1_F13_P5_a)



[Mount] Marcy Trip [group in shelter]
(NYSL_SC19469_B1_F13_P7)



[Mount] Marcy Trip
(NYSL_SC19469_B1_F13_P8)



Mt. Marcy
(NYSL_SC19469_B1_F13_P10_ref)



[Mount] Marcy Trip
(NYSL_SC19469_B1_F13_P12)



[View from] Hunter Mt.
(NYSL_SC19469_B2_F22_P3_b)



[Shelter on] Hunter Mt.
(NYSL_SC19469_B2_F22_P3_c)



[Fire tower on] Hunter Mt.
(NYSL_SC19469_B2_F22_P4)



Hunter Mt. (NYSL_SC19469_B2_F22_P5)



Slide Mountain
(NYSL_SC19469_B2_F24_P2)



[Fire tower on] Slide Mt.
(NYSL_SC19469_B2_F24_P5)



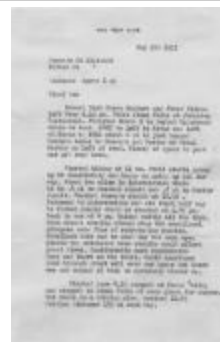
Slide Mountain
(NYSL_SC19469_B2_F24_P6)



Plateau Mt. (NYSL_SC19469_B2_F25_P7)



[Trail to] Cascade Mt.
(NYSL_SC19469_B2_F26_P2)



Diary entry for Cascade and Porter
Mountains climb
(NYSL_SC19469_B2_F26_P7)



View East, Lake Champlain
(NYSL_SC19469_B2_F28_P4)



Round Mt. from Start of Trail
(NYSL_SC19469_B2_F28_P6)



Black Mt. (NYSL_SC19469_B2_F29_P4)



Diary entry for Big Slide Mountain Trip
(NYSL_SC19469_B2_F30_P3)



[Summit of] Mt. Dix
(NYSL_SC19469_B2_F30_P7)



Elk Lake and Clear Pond from Mt. Dix
(NYSL_SC19469_B2_F30_P8)



Ladder of Gothics [Mountain]
(NYSL_SC19469_B3_F32_P2)



John's Brook Lodge
(NYSL_SC19469_B3_F33_P2)



[Crossing] John's Brook
(NYSL_SC19469_B3_F33_P3)



Description with photograph of hike up Big Slide Mountain
(NYSL_SC19469_B3_F33_P11)



Black Head Mt. (NYSL_SC19469_B3_F37)



Ranger's Cabin, Lake Colden
(NYSL_SC19469_B3_F39_P8)



Marcy Dam
(NYSL_SC19469_B3_F40_P2_a)



McIntyre [sic] from Indian Falls
(NYSL_SC19469_B3_F40_P2_b)



Shelter on Marcy
(NYSL_SC19469_B3_F40_P3)



Marcy from Skylight
(NYSL_SC19469_B3_F40_P4)



[Mount] Marcy
(NYSL_SC19469_B3_F40_P6)



Heart Lake (NYSL_SC19469_B3_F41_P2)



Noonmark [Mountain]
(NYSL_SC19469_B3_F41_P4)



Noonmark [Mountain]
(NYSL_SC19469_B3_F41_P5)



[Mount] Colden
(NYSL_SC19469_B3_F42_P1)



Avalanche Lake
(NYSL_SC19469_B3_F42_P6)



Whiteface [Mountain]
(NYSL_SC19469_B3_F43_P2)



Whiteface Mt. from Mt. Esther
(NYSL_SC19469_B3_F44_P1)



Elk Lake (NYSL_SC19469_B3_F45_P1_a)



Elk Lake Toward the Great Range
(NYSL_SC19469_B3_F45_P1_b)



Mt. Macomb (NYSL_SC19469_B3_F45_P5)



Mt. Dix From South Dix
(NYSL_SC19469_B4_F46_P1)



View Across Flowed Lands
(NYSL_SC19469_B4_F47_P1)



Horse atop Mt. Marcy used to bring up radio
(NYSL_SC19469_B4_F48_P1)



Cascade Mt.
(NYSL_SC19469_B4_F48_P8_a)



Mt. McIntyre [sic]
(NYSL_SC19469_B4_F48_P8_b)



Mt. Ampersand from Seymour
(NYSL_SC19469_B4_F51_P4)



Cabins Near Lake Colden
(NYSL_SC19469_B4_F52_P8)



Iroquois Mt. From Summit of Mt. Herbert
(NYSL_SC19469_B4_F52_P9)



Algonquin [Mountain]
(NYSL_SC19469_B4_F56_P2)



Rangers Cabin Atop Snowy Mt.
(NYSL_SC19469_B4_F57_P5)



[View from] Hunter Mt.
(NYSL_SC19469_B4_F58_P2)



Fire tower Atop Hunter Mt.
(NYSL_SC19469_B4_F58_P2a)



Fire tower on Vanderwhacker Mt.
(NYSL_SC19469_B4_F58_P5)



From Vanderwhacker Mt. View West
(NYSL_SC19469_B4_F58_P6)



[View from] Santononi
(NYSL_SC19469_B4_F59_P3)



Crane Mountain
(NYSL_SC19469_B5_F63_P1)



Crane Mountain [Fire Tower]
(NYSL_SC19469_B5_F63_P2)



Crane Mountain [from Crane Pond]
(NYSL_SC19469_B5_F63_P2a)



Indian Pass [Trail]
(NYSL_SC19469_B5_F73_P1)



Indian Pass (NYSL_SC19469_B5_F73_P2)



Slide Mt. Catskills
(NYSL_SC19469_B6_F78_P3)



[Algonquin and Wright Mts from] Phelps Mt.
(NYSL_SC19469_B6_F83_P4)



View from Giant [Mountain]
(NYSL_SC19469_B6_F87_P4)



Cliff Mt. (NYSL_SC19469_B6_F88_P1)



Gothic[s]-Saddleback [Mountains]
(NYSL_SC19469_B6_F90_P2)



[Approaching] Gothic[s]-Saddleback
(NYSL_SC19469_B6_F90_P2_b)



Haystack Mt. (NYSL_SC19469_B7_F91_P1)



[View from] Haystack Mt.
(NYSL_SC19469_B7_F91_P2)



[Mount] Marshall
(NYSL_SC19469_B7_F91_P4)



Kempshall Mt.
(NYSL_SC19469_B7_F95_P3)

