



Plan of Gates for Lower Lock, Upper Side Cut, West Troy (NYSA\_B0292-85\_V004\_84)



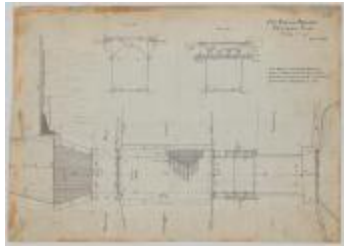
Map and Profile of Lock 29 and 30 near Schoharie Creek (NYSA\_B0292-85\_V010X\_039)



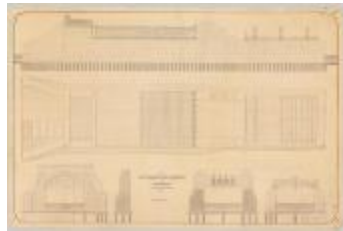
Continuation of Map and Profile of Lock 29 and 30 near Schoharie Creek (NYSA\_B0292-85\_V010X\_040)



Blueprint Map of Schoharie Creek Feeder (NYSA\_B0292-85\_V010Y)



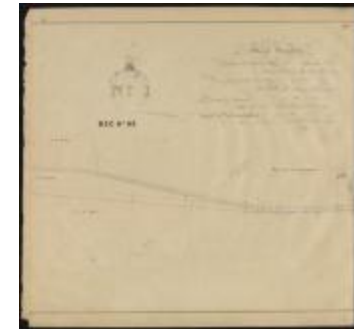
Plan for Fort Edward aqueduct, Champlain canal (NYSA\_B0292-85\_V011\_05)



Plan for aqueduct across Wood Creek at Fort Edward (NYSA\_B0292-85\_V011\_07)



Location Map of Schoharie Creek Dam (NYSA\_B0292-85\_V019\_061B)



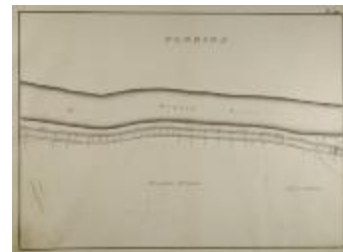
Enlargement of the Erie Canal: Oriskany to Stanwix, Sections 118-119, part 1 of 2 (NYSA\_B0292-85\_V028\_06)



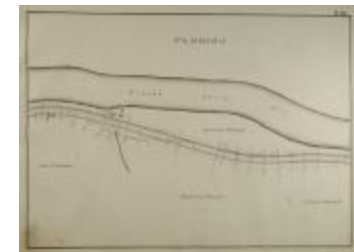
Enlargement of the Erie Canal: Oriskany to Stanwix, Sections 118-119, part 2 of 2 (NYSA\_B0292-85\_V028\_07)



Map of the Erie Canal and Mohawk River running through the Town of Florida in Montgomery County (NYSA\_B0292-85\_V031\_31)



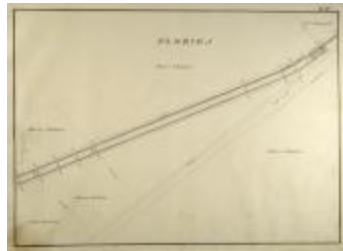
Map of the Erie Canal and Mohawk River running through the Town of Florida in Montgomery County (NYSA\_B0292-85\_V031\_32)



Map of the Erie Canal and Mohawk River running through the Town of Florida in Montgomery County (NYSA\_B0292-85\_V031\_33)



Map of the Erie Canal running through the Town of Florida in Montgomery County (NYSA\_B0292-85\_V031\_34)



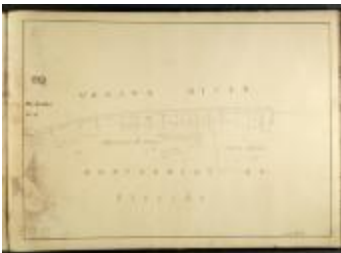
Map of the Erie Canal running through the Town of Florida in Montgomery County (NYSA\_B0292-85\_V031\_35)



Map of the Erie Canal running through the Towns of Florida and Glen and across the Schoharie Creek (NYSA\_B0292-85\_V031\_36)



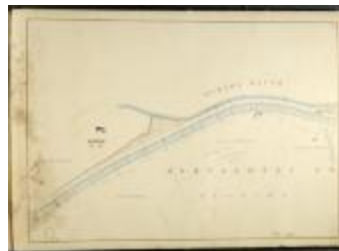
Map of the Erie Canal and Mohawk River running through the Town of Florida in Montgomery County (NYSA\_B0292-85\_V034\_37)



Map of the Erie Canal and Mohawk River running through the Town of Florida in Montgomery County (NYSA\_B0292-85\_V034\_38)



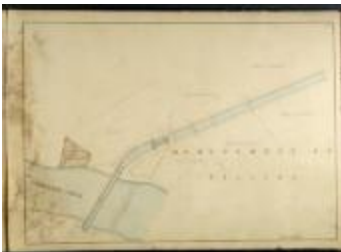
Map of the Erie Canal and Mohawk River running through the Town of Florida in Montgomery County (NYSA\_B0292-85\_V034\_39)



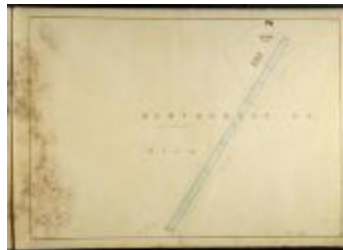
Map of the Erie Canal and Mohawk River running through the Town of Florida in Montgomery County (NYSA\_B0292-85\_V034\_40)



Map of the Erie Canal running through the Town of Florida in Montgomery County (NYSA\_B0292-85\_V034\_41)



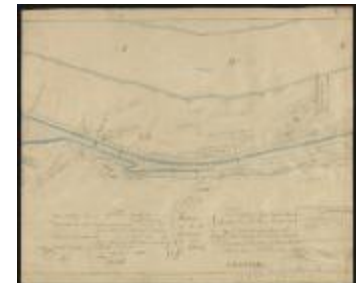
Map of the Erie Canal and Schoharie Creek running through the Town of Florida in Montgomery County (NYSA\_B0292-85\_V034\_42)



Map of the Erie Canal running through the Town of Glen in Montgomery County (NYSA\_B0292-85\_V034\_43)



Map showing the Erie Canal in Saratoga County, part 1 of 2 (NYSA\_B0292-85\_V035\_01A)



Map showing the Erie Canal in Saratoga County, part 2 of 2 (NYSA\_B0292-85\_V035\_01B)



Map showing the Erie Canal in the City of Schenectady, part 1 of 3 (NYSA\_B0292-85\_V035\_06A)



Map showing the Erie Canal in the City of Schenectady, part 2 of 3 (NYSA\_B0292-85\_V035\_06B)



Map showing the Erie Canal in the City of Schenectady, part 3 of 3 (NYSA\_B0292-85\_V035\_07)



Map showing the Erie Canal in Rotterdam, part 1 of 2 (NYSA\_B0292-85\_V035\_11A)



Map showing the Erie Canal in Rotterdam, part 2 of 2 (NYSA\_B0292-85\_V035\_11B)



Map showing the Erie Canal in Montgomery County "The Noses", part 1 of 2 (NYSA\_B0292-85\_V035\_20A)



Map showing the Erie Canal in Montgomery County "The Noses", part 2 of 2 (NYSA\_B0292-85\_V035\_20B)



Map showing the Erie Canal in Montgomery County "The Noses", part 1 of 2 (NYSA\_B0292-85\_V035\_21A)



Map showing the Erie Canal in Montgomery County "The Noses", part 2 of 2 (NYSA\_B0292-85\_V035\_21B)



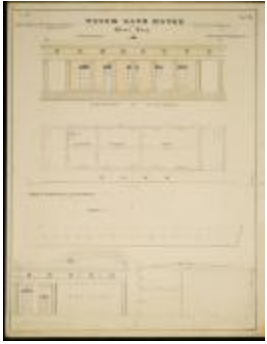
Map showing the Erie Canal in Montgomery County section 75 (NYSA\_B0292-85\_V035\_23)



Map showing detail from The Noses in Montgomery County (NYSA\_B0292-85\_V035\_32-34)



End Elevation of the Scale and Frame (NYSA\_B0292-85\_V046\_11)



Weigh Lock House at West Troy  
(NYSA\_B0292-85\_V046\_12)



Map showing the Erie Canal in Cohoes Falls  
(NYSA\_B0292-85\_V054\_07)



Enlarged Erie Canal, Saratoga County  
(NYSA\_B0292-85\_V054\_12)



Map showing the Erie Canal in Saratoga  
County (NYSA\_B0292-85\_V054\_17)



Map showing the Erie Canal in Saratoga  
County (NYSA\_B0292-85\_V054\_18)



Map showing the Erie Canal Lock 21 Upper  
Mohawk Aqueduct (NYSA\_B0292-  
85\_V054\_27)



Map showing the Erie Canal in Montgomery  
County, Section 44 (NYSA\_B0292-  
85\_V054\_42)



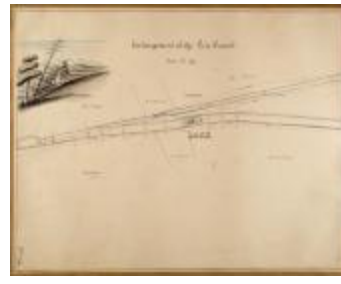
Map showing the Erie Canal in Yankee Hill,  
Section 47 (NYSA\_B0292-85\_V054\_48)



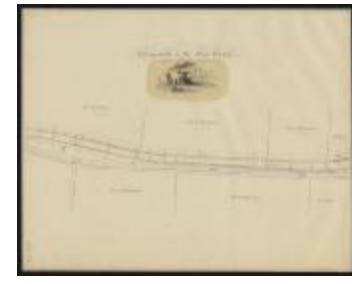
Map of the Enlargement of the Erie Canal.  
Section 50 (NYSA\_B0292-85\_V054\_50)



Map showing the Erie Canal Section 50  
(NYSA\_B0292-85\_V054\_51)

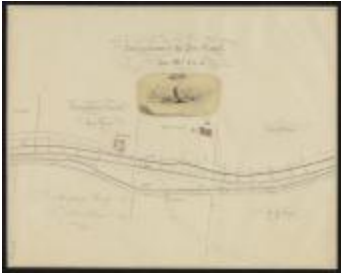


Map of the Enlargement of the Erie Canal.  
Section 51 (NYSA\_B0292-85\_V054\_52)



Map showing the Erie Canal Section 54  
(NYSA\_B0292-85\_V054\_58)

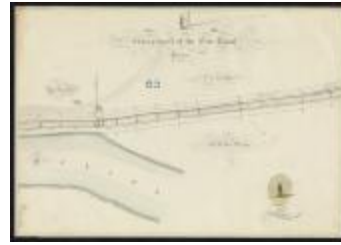




Map showing the Erie Canal Sections 54-55 (NYSA\_B0292-85\_V054\_59)



Map showing the Erie Canal Sections 55-56 (NYSA\_B0292-85\_V054\_61)



Map showing the Erie Canal (NYSA\_B0292-85\_V054\_66)



Map showing location of the Erie Canal in Watervliet (NYSA\_B0292-85\_V060\_23)



Map showing the Erie Canal improvements at lock 27: Phillip's aqueduct (NYSA\_B0292-85\_V060\_28)



Black River Canal Section 30, locks 97-102, part 1 of 2 (NYSA\_B0292-85\_V069\_13)



Black River Canal Section 30, locks 97-102, part 2 of 2 (NYSA\_B0292-85\_V069\_14)



Reservoir of North Branch of Black River, part 1 of 3 (NYSA\_B0292-85\_V069\_20)



Reservoir of North Branch of Black River, part 2 of 2 (NYSA\_B0292-85\_V069\_21)



Reservoir of North Branch of Black River, part 3 of 3 (NYSA\_B0292-85\_V069\_22)



Reservoir of South Branch of Black River, part 1 of 2 (NYSA\_B0292-85\_V069\_24)



Reservoir of South Branch of Black River, part 2 of 2 (NYSA\_B0292-85\_V069\_25)



Map showing the Erie Canal in Watervliet and West Troy basin. (NYSA\_B0292-85\_V070\_15)



Map showing the Erie Canal in Schenectady County (NYSA\_B0292-85\_V070\_57)



Map showing the Erie Canal in Boonville "Boater" (NYSA\_B0292-85\_V071\_01A)



Map showing the Erie Canal blue line and encroachments (NYSA\_B0292-85\_V071\_01B)



Map showing the Erie Canal in Leyden (NYSA\_B0292-85\_V071\_10)



Map showing the Erie Canal in Lyons Falls Terminus, at the meeting of the Black River and the Moose River (NYSA\_B0292-85\_V071\_21)



Map showing the Erie Canal in Boonville alongside the Black River (NYSA\_B0292-85\_V071\_31)



Map showing the Erie Canal in Boonville near Alder Creek Flow (NYSA\_B0292-85\_V071\_39)



Frontispiece of volume 71 (NYSA\_B0292-85\_V071\_71T)



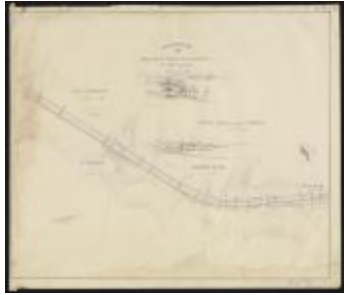
No. 4. Whipples Bridge Plan (NYSA\_B0292-85\_V072\_02)



Map of the State of New York showing the locations of its canals and railroads (NYSA\_B0292-85\_V088\_03)



Map showing the Erie Canal in Boonville "Gorge" with Lock 44, Lock 45, Lock 46 and Lock 57 (NYSA\_B0292-85\_V088\_46)



Map showing the Erie Canal from Boonville to Port Leyden (NYSA\_B0292-85\_V088\_60)



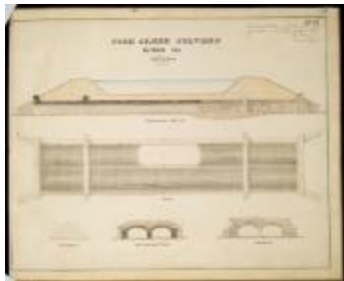
Map showing the Erie Canal in Lock 74, Section 24 (NYSA\_B0292-85\_V088\_61)



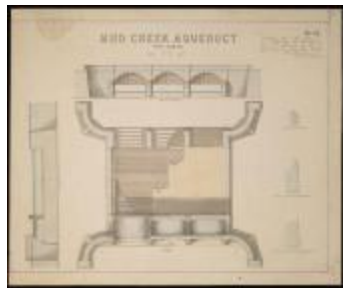
Map showing the Erie Canal in Lewis County, Section 25 (NYSA\_B0292-85\_V088\_63)



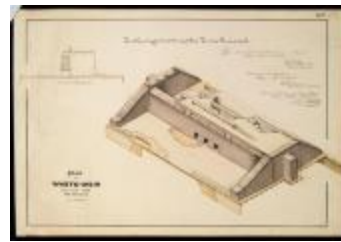
Waste Weir Gate (NYSA\_B0292-85\_V090\_19)



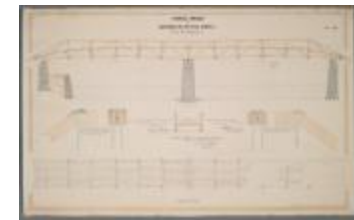
Fish Creek Culvert, Section 318 (NYSA\_B0292-85\_V090\_35)



Mud Creek Aqueduct near Palmyra (NYSA\_B0292-85\_V090\_57)



Plan of Waste-Weir, Section 284, Tow-Path Side (NYSA\_B0292-85\_V101\_35)



Change-Bridge on Sections Nos. 1&2 at York Street, City of Buffalo. (NYSA\_B0292-85\_V101\_39)



Erie Canal. Structure Map and Plan Books (NYSA\_B0292\_01)