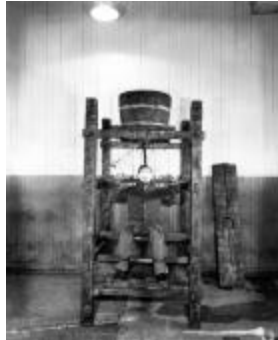




Sing Sing Prison electric chair
(NYSA_B1514-97_001)



Device used for corporal punishment
(NYSA_B1514-97_002)



Side view of Sing Sing prison electric chair
(NYSA_B1514-97_004)



Row of Cells at Sing Sing Prison
(NYSA_B1514-97_019)



Inmate inside of Sing Sing Prison cell
(NYSA_B1514-97_031)



Front view of Sing Sing Prison electric chair
(NYSA_B1514-97_B1_005)