



Deposit CCC Camp (NYSA_14297-87_2059)



Close-up of deer with short horns Broome County (NYSA_14297-87_2708)



Lily Lake State Park (NYSA_14297-87_4239)



Lily Lake State Park (NYSA_14297-87_4240)



Lily Lake State Park (NYSA_14297-87_4241)



Lily Lake State Park (NYSA_14297-87_4242)



Lily Lake State Park (NYSA_14297-87_4243)



Lily Lake State Park (NYSA_14297-87_4244)



New York State Fair Demonstration of the Harmful Effects of Smoking (NYSA_14655-88_B01_F58_smoking1)



New York State Fair Demonstration of the Harmful Effects of Smoking (NYSA_14655-88_B01_F58_smoking2)



New York State Fair Demonstration of the Harmful Effects of Smoking (NYSA_14655-88_B01_F58_smoking3)



New York State Fair Demonstration of the Harmful Effects of Smoking (NYSA_14655-88_B01_F58_smoking4)



New York State Fair Demonstration of the Harmful Effects of Smoking (NYSA_14655-88_B01_F58_smoking5)



Railroad project, Nanticoke Avenue, Endicott, NY (NYSA_17672-92_B11_1093_001)



Railroad project, Nanticoke Avenue, Endicott, NY (NYSA_17672-92_B12_1105_001)



Railroad project, Nanticoke Avenue, Endicott, NY (NYSA_17672-92_B12_1247_001)



Railroad project, Binghamton, NY (NYSA_17672-92_B12_1298_001)



International Business Machines Corporation, Johnson City, New York. February 28, 1937 (NYSA_A0245-77_Broome_B02_15)



Map of 3 Tracts in the Town of Windsor. Map #19 (NYSA_A0273-78_19)



Map of Township No. 6, Sidney and Township No. 7 Hambden. Map #77 (NYSA_A0273-78_77)



Map of Townships No. 5, Chenango, No. 8, Randolph, and General Clinton's Tract. Map #82 (NYSA_A0273-78_82)



Map of sundry tracts of land on the Delaware river in Broome County. Map #94A (NYSA_A0273-78_94A)



Map of 19 lots of unappropriated Land in the Town of Windsor. Map #167 (NYSA_A0273-78_167)



Map of Randolph Township. Map #173 (NYSA_A0273-78_173)



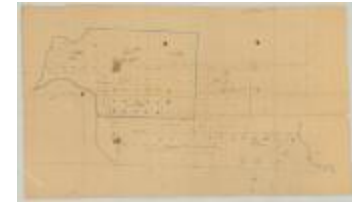
Map of land in the Township of Chenigo, the property of Abijah Hammond, Esquire. Map #199 (NYS A_0273-78_199)



Map of the Towns of Warren, Clinton, Fayette and Green. Map #229 (NYS A_0273-78_229)



Map of the Towns of Warren, Clinton, Fayette and Green. Map #229(Copy) (NYS A_0273-78_229_Copy)



Townships of Chenango, Randolph, etc. Map #737 (NYS A_0273-78_737)



Roy Gardinier Biography (NYS A_0412-78_B08_F01_Gardinier_bio)

Roy S. Gardinier was the only son of Mr. and Mrs. A. W. Gardinier of Chenangoville, and was born in 1842 and was a young man when the canal was first built. He was not only a hard worker but a good and other relation to the entire community. Full particulars of his life have been learned and the same place is uncertain to some extent of the great Gardner family to have the duty brought home to you.

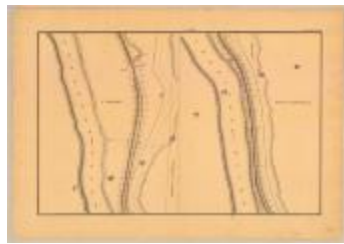
Roy Gardinier Biography Addendum (NYS A_0412-78_B08_F01_Gardinier_bio_addendum)



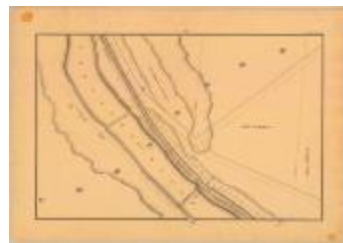
Roy Gardinier (NYS A_0412-78_B08_F01_Gardinier_photo)



Chenango Canal Survey, Greene and Chenango showing Town and County Line (NYS A_0848-77_MC8_DR1_V17_CHEN2_139)



Chenango Canal Survey, Chenango showing two views of the Canal, Lock No. 106 and Chenango River (NYS A_0848-77_MC8_DR1_V17_CHEN2_140)



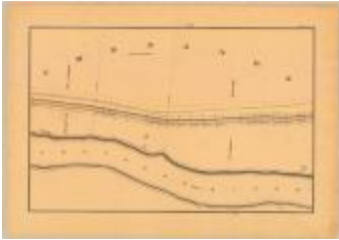
Chenango Canal Survey, Chenango showing Willard, Rogers and Lock No. 107 (NYS A_0848-77_MC8_DR1_V17_CHEN2_141)



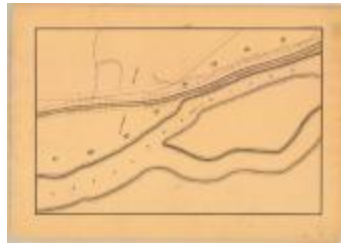
Chenango Canal Survey, Chenango showing Willard, Edwards and the junction of the Chenango and Onondaga Rivers (NYS A_0848-77_MC8_DR1_V17_CHEN2_142)



Chenango Canal Survey, Chenango showing McDonald, Rogers and Chenango River (NYS A_0848-77_MC8_DR1_V17_CHEN2_143)



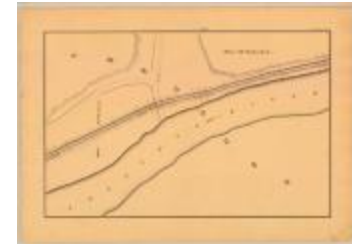
Chenango Canal Survey, Chenango showing Terwillegger, Eldredge and Chenango River (NYS A_0848-77_MC8_DR1_V17_CHEN2_144)



Chenango Canal Survey, Chenango showing Eldredge and Chenango River (NYS A_0848-77_MC8_DR1_V17_CHEN2_145)



Chenango Canal Survey, Chenango showing Large pond, Chenango River and Lock No. 108 (NYS A_0848-77_MC8_DR1_V17_CHEN2_146)



Chenango Canal Survey, Chenango showing Rutherford and Chenango River (NYS A_0848-77_MC8_DR1_V17_CHEN2_147)



Chenango Canal Survey, Chenango showing two views of the Canal and Lock No. 109 (NYS A_0848-77_MC8_DR1_V17_CHEN2_148)



Chenango Canal Survey, Chenango showing Rutherford and Eldridge (NYS A_0848-77_MC8_DR1_V17_CHEN2_149)



Chenango Canal Survey, Chenango showing Eldredge, Chenango River and Osborn Brook (NYS A_0848-77_MC8_DR1_V17_CHEN2_151)



Chenango Canal Survey, Chenango showing Eldredge, Lewis and Lock No. 110 (NYS A_0848-77_MC8_DR1_V17_CHEN2_152)



Chenango Canal Survey, Chenango showing two views of Canal, Crocker and Leggette (NYS A_0848-77_MC8_DR1_V17_CHEN2_153)



Chenango Canal Survey, Chenango showing two views of Canal and Lock No. 111 (NYS A_0848-77_MC8_DR1_V17_CHEN2_154)



Chenango Canal Survey, Chenango showing two views of Canal, VanName and DeWitt (NYS A_0848-77_MC8_DR1_V17_CHEN2_155)



Chenango Canal Survey, Chenango showing VanName and Crocker (NYS A_0848-77_MC8_DR1_V17_CHEN2_156)



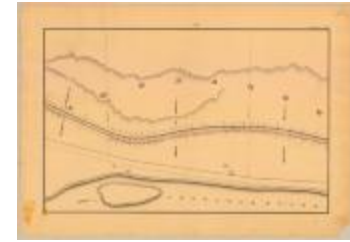
Chenango Canal Survey, Chenango showing Crocker and Ogden (NYSA_A0848-77_MC8_DR1_V17_CHEN2_157)



Chenango Canal Survey, Chenango showing Carman and Bevier (NYSA_A0848-77_MC8_DR1_V17_CHEN2_158)



Chenango Canal Survey, Chenango showing Woodcock and Dickerson (NYSA_A0848-77_MC8_DR1_V17_CHEN2_159)



Chenango Canal Survey, Chenango showing Collier and Bevier (NYSA_A0848-77_MC8_DR1_V17_CHEN2_160)



Chenango Canal Survey, Chenango showing The Branch Canal Company, Greene and Ely (NYSA_A0848-77_MC8_DR1_V17_CHEN2_161)



Chenango Canal Survey, Chenango showing Ely and Eldredge (NYSA_A0848-77_MC8_DR1_V17_CHEN2_162)



Chenango Canal Survey, showing Chenango River, Lewis Mills, Lock No. 112 and the Village of Binghamton (NYSA_A0848-77_MC8_DR1_V17_CHEN2_163)



Chenango Canal Survey, showing Village of Binghamton, Lock No. 113, 114 and the junction of the Susquehanna and Chenango Rivers (NYSA_A0848-77_MC8_DR1_V17_CHEN2_164)



New York. Endicott. Birds-eye view of Endicott Johnson Plant. (NYSA_A3045-78_9962)



Tanning: Hides (on truck, from China; at left, from Java) (NYSA_A3045-78_9963)



Tanning: Liming vats, removing hair. Endicott Johnson Plant, Endicott NY. (NYSA_A3045-78_9964)



Tanning: Handler Room, Coloring Vats. Endicott Johnson Plant, Endicott NY. (NYSA_A3045-78_9966)



Tanning: Tan Yard. Endicott Johnson Plant, Endicott NY. (NYS A_3045-78_9967)



Shoemaking: Splitting hides into two pieces for upper leather (NYS A_3045-78_9968)



Shoemaking: Shaving hides to make stock of one thickness (NYS A_3045-78_9969)



Shoemaking: Rolling hides for sole leather. Endicott Johnson Plant, Endicott NY. (NYS A_3045-78_9970)



Shoemaking: Sewing uppers together. Endicott Johnson Plant, Endicott, NY (NYS A_3045-78_9973)



Shoemaking: Stitching Room. Endicott Johnson Plant, Endicott, NY. (NYS A_3045-78_9974)



Shoemaking: Shoe rack with parts assembled. Endicott Johnson plant, Endicott NY. (NYS A_3045-78_9975)



New York. Endicott. Aerated Swimming Pool and End of Endicott Shoe Factory. (NYS A_3045-78_10000)



Tanning: Beam Workers at Endicott Johnson Plant. (NYS A_3045-78_A9965)



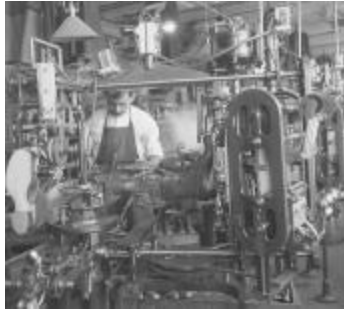
Shoemaking: Cutting soles and heels. Endicott Johnson Plant, Endicott, NY (NYS A_3045-78_A9971)



Shoemaking: Cutting uppers. Endicott Johnson Plant, Endicott NY, 1917 (NYS A_3045-78_A9972)



Shoemaking: Putting on heel. Endicott Johnson Plant, Endicott NY. (NYS A_3045-78_A9976)



Shoemaking: Shoe finishing. Endicott Johnson Plant, Endicott NY. (NYSA_A3045-78_A9977)



Shoemaking: Shoes at different stages of completion (NYSA_A3045-78_A9978)



N.Y. Binghamton State Hospital. (NYSA_A3045-78_D47_BiH)



Mohawk Valley (NYSA_A3045-78_Dn_Can3)



Kaaterskill Clove (NYSA_A3045-78_Dn_CdK)



Susquehanna River at Windsor (NYSA_A3045-78_Dn_Su8)



Susquehanna River at Nineveh (NYSA_A3045-78_Dn_Su72)



Susquehanna River at Dickinson (NYSA_A3045-78_Dn_Su82)



Susquehanna River Floodplain (NYSA_A3045-78_Dn_Su87)



Chenango River (View North) (NYSA_A3045-78_Dn_SuC4)



Port Dickinson (NYSA_A3045-78_Dn_SuC5)



A Soldier of the Soil (My Experiences as a Cadet on the Farm) (NYSA_A3112-77_B4_F029_Sakolsky)



Broome County, Victory Canning Caravan
(NYSA_A4299-78_B3F3)



Binghamton, N.Y. (NYSA_B1598-99_4662)