



**Plan of Gates for Lower Lock, Upper Side Cut, West Troy  
(NYSA\_B0292-85\_V004\_84)**



**Map and Profile of Lock 29 and 30 near Schoharie Creek  
(NYSA\_B0292-85\_V010X\_039)**



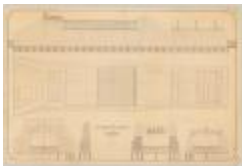
**Continuation of Map and Profile of Lock 29 and 30 near Schoharie  
Creek (NYSA\_B0292-85\_V010X\_040)**



**Blueprint Map of Schoharie Creek Feeder (NYSA\_B0292-85\_V010Y)**



**Plan for Fort Edward aqueduct, Champlain canal (NYSA\_B0292-  
85\_V011\_05)**



**Plan for aqueduct across Wood Creek at Fort Edward (NYSA\_B0292-  
85\_V011\_07)**



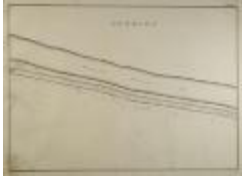
**Location Map of Schoharie Creek Dam (NYSA\_B0292-85\_V019\_061B)**



**Enlargement of the Erie Canal: Oriskany to Stanwix, Sections 118-  
119, part 1 of 2 (NYSA\_B0292-85\_V028\_06)**



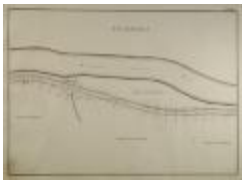
**Enlargement of the Erie Canal: Oriskany to Stanwix, Sections 118-119, part 2 of 2 (NYSA\_B0292-85\_V028\_07)**



**Map of the Erie Canal and Mohawk River running through the Town of Florida in Montgomery County (NYSA\_B0292-85\_V031\_31)**



**Map of the Erie Canal and Mohawk River running through the Town of Florida in Montgomery County (NYSA\_B0292-85\_V031\_32)**



**Map of the Erie Canal and Mohawk River running through the Town of Florida in Montgomery County (NYSA\_B0292-85\_V031\_33)**



**Map of the Erie Canal running through the Town of Florida in Montgomery County (NYSA\_B0292-85\_V031\_34)**



**Map of the Erie Canal running through the Town of Florida in Montgomery County (NYSA\_B0292-85\_V031\_35)**



**Map of the Erie Canal running through the Towns of Florida and Glen and across the Schoharie Creek (NYSA\_B0292-85\_V031\_36)**



**Map of the Erie Canal and Mohawk River running through the Town of Florida in Montgomery County (NYSA\_B0292-85\_V034\_37)**



**Map of the Erie Canal and Mohawk River running through the Town of Florida in Montgomery County (NYSA\_B0292-85\_V034\_38)**



**Map of the Erie Canal and Mohawk River running through the Town of Florida in Montgomery County (NYSA\_B0292-85\_V034\_39)**



**Map of the Erie Canal and Mohawk River running through the Town of Florida in Montgomery County (NYSA\_B0292-85\_V034\_40)**



**Map of the Erie Canal running through the Town of Florida in Montgomery County (NYSA\_B0292-85\_V034\_41)**



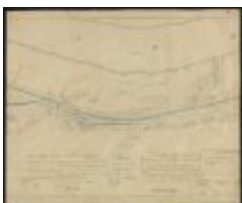
**Map of the Erie Canal and Schoharie Creek running through the Town of Florida in Montgomery County (NYSA\_B0292-85\_V034\_42)**



**Map of the Erie Canal running through the Town of Glen in Montgomery County (NYSA\_B0292-85\_V034\_43)**



**Map showing the Erie Canal in Saratoga County, part 1 of 2 (NYSA\_B0292-85\_V035\_01A)**



**Map showing the Erie Canal in Saratoga County, part 2 of 2 (NYSA\_B0292-85\_V035\_01B)**



**Map showing the Erie Canal in the City of Schenectady, part 1 of 3  
(NYSA\_B0292-85\_V035\_06A)**



**Map showing the Erie Canal in the City of Schenectady, part 2 of 3  
(NYSA\_B0292-85\_V035\_06B)**



**Map showing the Erie Canal in the City of Schenectady, part 3 of 3  
(NYSA\_B0292-85\_V035\_07)**



**Map showing the Erie Canal in Rotterdam, part 1 of 2 (NYSA\_B0292-85\_V035\_11A)**



**Map showing the Erie Canal in Rotterdam, part 2 of 2 (NYSA\_B0292-85\_V035\_11B)**



**Map showing the Erie Canal in Montgomery County "The Noses",  
part 1 of 2 (NYSA\_B0292-85\_V035\_20A)**



Map showing the Erie Canal in Montgomery County "The Noses", part 2 of 2 (NYSA\_B0292-85\_V035\_20B)



Map showing the Erie Canal in Montgomery County "The Noses", part 1 of 2 (NYSA\_B0292-85\_V035\_21A)



Map showing the Erie Canal in Montgomery County "The Noses", part 2 of 2 (NYSA\_B0292-85\_V035\_21B)



Map showing the Erie Canal in Montgomery County section 75 (NYSA\_B0292-85\_V035\_23)



Map showing detail from The Noses in Montgomery County (NYSA\_B0292-85\_V035\_32-34)



End Elevation of the Scale and Frame (NYSA\_B0292-85\_V046\_11)



Weigh Lock House at West Troy (NYSA\_B0292-85\_V046\_12)



**Map showing the Erie Canal in Cohoes Falls (NYSA\_B0292-85\_V054\_07)**



**Enlarged Erie Canal, Saratoga County (NYSA\_B0292-85\_V054\_12)**



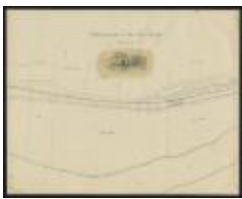
**Map showing the Erie Canal in Saratoga County (NYSA\_B0292-85\_V054\_17)**



**Map showing the Erie Canal in Saratoga County (NYSA\_B0292-85\_V054\_18)**



**Map showing the Erie Canal Lock 21 Upper Mohawk Aqueduct (NYSA\_B0292-85\_V054\_27)**



**Map showing the Erie Canal in Montgomery County, Section 44 (NYSA\_B0292-85\_V054\_42)**



**Map showing the Erie Canal in Yankee Hill, Section 47 (NYSA\_B0292-85\_V054\_48)**



**Map of the Enlargement of the Erie Canal. Section 50 (NYS A\_B0292-85\_V054\_50)**



**Map showing the Erie Canal Section 50 (NYS A\_B0292-85\_V054\_51)**



**Map of the Enlargement of the Erie Canal. Section 51 (NYS A\_B0292-85\_V054\_52)**



**Map showing the Erie Canal Section 54 (NYS A\_B0292-85\_V054\_58)**



**Map showing the Erie Canal Sections 54-55 (NYS A\_B0292-85\_V054\_59)**



**Map showing the Erie Canal Sections 55-56 (NYS A\_B0292-85\_V054\_61)**



**Map showing the Erie Canal (NYS A\_B0292-85\_V054\_66)**



**Map showing location of the Erie Canal in Watervliet (NYS A\_B0292-85\_V060\_23)**



**Map showing the Erie Canal improvements at lock 27: Phillip's aqueduct (NYSA\_B0292-85\_V060\_28)**

---



**Black River Canal Section 30, locks 97-102, part 1 of 2 (NYSA\_B0292-85\_V069\_13)**

---



**Black River Canal Section 30, locks 97-102, part 2 of 2 (NYSA\_B0292-85\_V069\_14)**

---



**Reservoir of North Branch of Black River, part 1 of 3 (NYSA\_B0292-85\_V069\_20)**

---



**Reservoir of North Branch of Black River, part 2 of 2 (NYSA\_B0292-85\_V069\_21)**

---



**Reservoir of North Branch of Black River, part 3 of 3 (NYSA\_B0292-85\_V069\_22)**

---



**Reservoir of South Branch of Black River, part 1 of 2 (NYSA\_B0292-85\_V069\_24)**

---





**Reservoir of South Branch of Black River, part 2 of 2 (NYSA\_B0292-85\_V069\_25)**



**Map showing the Erie Canal in Watervliet and West Troy basin. (NYSA\_B0292-85\_V070\_15)**



**Map showing the Erie Canal in Schenectady County (NYSA\_B0292-85\_V070\_57)**



**Map showing the Erie Canal in Boonville "Boater" (NYSA\_B0292-85\_V071\_01A)**



**Map showing the Erie Canal blue line and encroachments (NYSA\_B0292-85\_V071\_01B)**



**Map showing the Erie Canal in Leyden (NYSA\_B0292-85\_V071\_10)**



**Map showing the Erie Canal in Lyons Falls Terminus, at the meeting of the Black River and the Moose River (NYSA\_B0292-85\_V071\_21)**



**Map showing the Erie Canal in Boonville alongside the Black River  
(NYSA\_B0292-85\_V071\_31)**

---



**Map showing the Erie Canal in Boonville near Alder Creek Flow  
(NYSA\_B0292-85\_V071\_39)**

---



**Frontispiece of volume 71 (NYSA\_B0292-85\_V071\_71T)**

---



**No. 4. Whipples Bridge Plan (NYSA\_B0292-85\_V072\_02)**

---



**Map of the State of New York showing the locations of its canals and  
railroads (NYSA\_B0292-85\_V088\_03)**

---



**Map showing the Erie Canal in Boonville "Gorge" with Lock 44, Lock  
45, Lock 46 and Lock 57 (NYSA\_B0292-85\_V088\_46)**

---



**Map showing the Erie Canal from Boonville to Port Leyden  
(NYSA\_B0292-85\_V088\_60)**

---



Map showing the Erie Canal in Lock 74, Section 24 (NYSA\_B0292-85\_V088\_61)



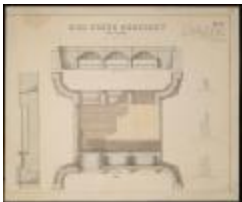
Map showing the Erie Canal in Lewis County, Section 25 (NYSA\_B0292-85\_V088\_63)



Waste Weir Gate (NYSA\_B0292-85\_V090\_19)



Fish Creek Culvert, Section 318 (NYSA\_B0292-85\_V090\_35)



Mud Creek Aqueduct near Palmyra (NYSA\_B0292-85\_V090\_57)



Plan of Waste-Weir, Section 284, Tow-Path Side (NYSA\_B0292-85\_V101\_35)



Change-Bridge on Sections Nos. 1&2 at York Street, City of Buffalo. (NYSA\_B0292-85\_V101\_39)



Erie Canal. Structure Map and Plan Books (NYSA\_B0292\_01)