



Civil War muster roll abstract for Elijah Penny of the 4th Heavy Artillery (NYSA_13775-83_ArtilleryHeavy_04_4256_Penny_Elijah)



Civil War muster roll abstract for Antonio Hernandez of the 8th Cavalry (NYSA_13775-83_Cavalry_08_1430_Hernandez_Antonio)



Civil War muster roll abstract for Joseph C. Rodriguez of the 9th Infantry (NYSA_13775-83_Infantry_009_1323_Rodriguez_Joseph_C_p2)



Civil War muster roll abstract for Esteban Feliz of the 39th Infantry (NYSA_13775-83_Infantry_039_0988_Feliz_Esteban)



Civil War muster roll abstract for Emanuel Gomez of the 39th Infantry (NYSA_13775-83_Infantry_039_1229_Gomez_Emanuel)



Civil Roll muster roll abstract for Jacinto Gomez of the 39th Infantry (NYSA_13775-83_Infantry_039_1230_Gomez_Jacinto)



Civil War muster roll abstract for Juan Gonzalez of the 39th Infantry (NYSA_13775-83_Infantry_039_1231_Gonzalez_Juan)



**Civil War muster roll abstract for Juan Hernandez of the 39th Infantry
(NYSA_13775-83_Infantry_039_1445_Hernandez_Juan)**



**Civil Roll muster roll abstract for Juan Rodriguez of the 39th Infantry
(NYSA_13775-83_Infantry_039_2869_Rodriguez_Juan)**



**Civil War muster roll abstract for Pedro Sanchez of the 39th Infantry
(NYSA_13775-83_Infantry_039_2999_Sanchez_Pedro)**



**Civil War muster roll abstract for Alfred C. Penny of the 82nd Infantry
(NYSA_13775-83_Infantry_082_2467_Penny_Alfred_C)**



**Civil War muster roll abstract for Archibald Penny of the 83rd Infantry
(NYSA_13775-83_Infantry_083_1614_Penny_Archibald)**



**Civil Roll muster roll abstract for Manuel Garcia of the 84th Infantry
(NYSA_13775-83_Infantry_084_0639_Garcia_Manuel)**



**Civil Roll muster roll abstract for Harrison Clark of the 125th Infantry
(NYSA_13775-83_Infantry_125_0283_Clark_Harrison)**



Civil War muster roll abstract for James Johnson of the 127th Infantry (NYSA_13775-83_Infantry_127_710_Johnson)



Civil War muster roll abstract for Manuel Herrera of the 178th Infantry (NYSA_13775-83_Infantry_178_866_Herrera_Manuel)



Civil War muster roll abstract for Francisco Pena of the Independent Battalion of Infantry--Les Enfants Perdu (NYSA_13775-83_Infantry_Independent_Enfants_0912_Pena_Francisco)



Civil Roll muster roll abstract for Jasper Towns of the 31st United States Colored Troops (NYSA_13775-83_USCT_0031_1230_Towns_Jasper)



Civil Roll muster roll abstract for Abram Vroman of the 31st United States Colored Troops (NYSA_13775-83_USCT_0031_1269_Vroman_Abram)



Civil War muster roll abstract for Elisha Odell of the 20th Regiment, United States Colored Troops (NYSA_13775-83_USCT_20_Odell_Elisha)



Civil War muster roll abstract for Henry Oliver of the 20th Regiment, United States Colored Troops (NYSA_13775-83_USCT_20_Oliver_Henry)



Civil War muster roll abstract for Richard Oliver of the 20th Regiment, United States Colored Troops (NYSA_13775-83_USCT_20_Oliver_Richard)



Civil War muster roll abstract for Samuel Oliver of the 20th Regiment, United States Colored Troops (NYSA_13775-83_USCT_20_Oliver_Samuel)



Civil War muster roll abstract for William H. Oliver of the 20th Regiment, United States Colored Troops (NYSA_13775-83_USCT_20_Oliver_William_H)



Civil War muster roll abstract for William Oldstead of the 20th Regiment, United States Colored Troops (NYSA_13775-83_USCT_20_Olmstead_William)



Civil War muster roll abstract for Charles Ongway of the 20th Regiment, United States Colored Troops (NYSA_13775-83_USCT_20_Ongway_Charles)



Civil War muster roll abstract for Peter Osborn of the 20th Regiment, United States Colored Troops (NYSA_13775-83_USCT_20_Osborn_Peter)



Civil War muster roll abstract for Charles Owens of the 20th Regiment, United States Colored Troops (NYSA_13775-83_USCT_20_Owens_Charles)



Map of Township Cato (No. 3). Map #103 (NYSA_A0273-78_103)



Map of Great Hardenbergh Patent. Map #140 (NYSA_A0273-78_140)



Map of the Town of White Plains, Westchester County. Map #404D (Copy) (NYSA_A0273-78_404D)



Map of Onondaga Salt Lake. Map #410 (NYSA_A0273-78_410)



Map of the Town of Kinderhook. Map #411 (NYSA_A0273-78_411)



Map of the Town of Coxsackie, Green County. Map #420 (NYSA_A0273-78_420)



Map of the Township of West Chester. Map #424 (NYSA_A0273-78_424)



Map of Fort Richmond, Staten Island. Map #427 (NYSA_A0273-78_427)



Map of lands adjoining Lake Champlain in Clinton and Essex Counties. Map #428 (NYSA_A0273-78_428)



Map of Phillipstown, Dutchess County. Map #430 (NYSA_A0273-78_430)



Map of the Town of Shawangunk, Ulster County. Map #433 (NYSA_A0273-78_433)



Plan for subdividing the State Lands south of Erie Canal and east of West Street. Map #453 (NYSA_A0273-78_453)



Map of Subdivisions of lands near Church Street, Syracuse. Map #458B (NYSA_A0273-78_458B)



Map of several pieces of land situated in the Town of Bushwick, Kings County. Map #464 (NYSA_A0273-78_464)



Map of Oriskany Patent. Oneida County. Map #465 (NYSA_A0273-78_465)



Map of Tompkins County. Map #471 (NYSA_A0273-78_471)



Profile of the Wallkill river at Walden, Orange County. Map #472A (NYSA_A0273-78_472A)



**Profile of the Wallkill river at Walden, Orange County. Map #472B
(NYSA_A0273-78_472B)**



**Document with Profile of the Wallkill river at Walden, Orange County.
Map #472C (NYSA_A0273-78_472C)**



Lake George from original plot. Map #476A (NYSA_A0273-78_476A)



Lake George from original plot. Map #476B (NYSA_A0273-78_476B)



Map of Coarse Salt Lands at Syracuse, N. Y. Map #494 (NYSA_A0273-78_494)



**Bluff Point, in Raquette Lake, Hamilton County. Map #500
(NYSA_A0273-78_500)**



Map of Lake George. 1880. Map #502 (NYSA_A0273-78_502)



Totten and Crossfield's Purchase, Township 40 showing Raquette Lake. Map #503 (NYSA_A0273-78_503)



Totten and Crossfield's Purchase, Township 40 showing Raquette Lake. Map #503A (NYSA_A0273-78_503A)



Boundary line between the Towns of Exeter and Burlington. Map #507 (NYSA_A0273-78_507)



Map of Hoyt's Salt Block, 1st Ward, Syracuse. Map #508 (NYSA_A0273-78_508)



Corner Location of Benson Township, Jerseyfield Patent and Lawrence Patent. Map #512 (NYSA_A0273-78_512)



Macomb's Purchase. Great Lot No. 1, Township 20, Franklin County. Map #513 (NYSA_A0273-78_513)



Map of State Land in Buffalo, New York. Map #515 (NYSA_A0273-78_515)



Sempronius, Lot No. 61. Cayuga County. Map #521 (NYSA_A0273-78_521)



Map of Township of Lake Pleasant, Hamilton County. Map #587 (NYSA_A0273-78_587)



Map of State Lands, (Ne-ha-sa-ne park) Hamilton and Herkimer Co. Map #588 (NYSA_A0273-78_588)



Survey of Land for Pietrus Van Dreissen and John Van Dreissen. Map #622 (NYSA_A0273-78_622)



Survey of land for Edward Harrison and others. Map #627A (NYSA_A0273-78_627A)



Survey of land for Edward Harrison and others. Map #627B (NYSA_A0273-78_627B)



Map of Northhampton Patent. also the Philip Livingston Patent. Map #639 (NYSA_A0273-78_639)



Survey of land for Lendert Gansevoort and James Stewart. Map #640 (NYSA_A0273-78_640)



Map of various grants south and adjoining map #669. Map #670 (NYSA_A0273-78_670)



Part of Map No. #670 including lands of Joseph Goldthwaite and others. Map #671 (NYSA_A0273-78_671)



Map of Long Point on Lake George. Warren County. Map #672 (NYSA_A0273-78_672)



Map of lands adjoining Lake George near Fort Ticonderoga. Map #673 (NYSA_A0273-78_673)



Map of first tract of Belvidere of George Croghan's Patent, Otsego county. Map #680 (NYSA_A0273-78_680)



Survey of land for Philip Livingston, Arent Stevens, Edward Collins and others. Map #692A and 692B (NYSA_A0273-78_692A_692B)



Long Island in Lake George, with adjacent uplands. Warren county. Map #693 (NYSA_A0273-78_693)



Map of Land on upper Hudson river. Map #694 (NYSA_A0273-78_694)



Survey of land for Alex Turner, 25,000 acres, on the Batten kill, and various others adjoining. Map #717 (NYSA_A0273-78_717)



Survey of land for John Lawrence, 1000 acres, north of Artillery Patent, Washington county. Map #720. (NYSA_A0273-78_720)



Map of township of Plattsburgh, 28,000 acres, on Lake Champlain. Map #721 (NYSA_A0273-78_721)



Map of Jellis Fonda, 40,000 acres, in Oneida county. Map #722 (NYSA_A0273-78_722)



Map of subdivison of Fonda's Patent, Oneida county. Map #723 (NYSA_A0273-78_723)



Delaware river, copied from a map by Metcalfe. Map #725 (NYSA_A0273-78_725)



**Protraction of Isle La Motte, Lake Champlain, Vermont. Map #726
(NYS_A0273-78_726)**



Palmer's Purchase on the Sacondaga branch of Hudson river. Map #732 (NYS_A0273-78_732)



**Sketch of land in Steuben township, Oneida county; copy of
Cockburn's survey. Map #735 (NYS_A0273-78_735)**



**Townships of Hamden and Sidney with subdivisions. Map #736
(NYS_A0273-78_736)**



**Townships of Chenango, Randolph, etc. Map #737 (NYS_A0273-
78_737)**



**Canadian and Nova Scotia Refugee Lands, Clinton county. Map
#744A (NYS_A0273-78_744A)**



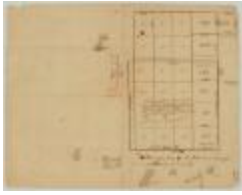
**Canadian and Nova Scotia Refugee Lands, Clinton county. Map
#744B (NYS_A0273-78_744B)**



**Canadian and Nova Scotia Refugee Lands, Clinton county. Map
#745A (NYS_A0273-78_745A)**



**Canadian and Nova Scotia Refugee Lands, Clinton county. Map
#745B (NYS_A0273-78_745B)**



**Canadian and Nova Scotia Refugee Lands, Clinton county. Map #746
(NYS_A0273-78_746)**



**Map of lands on Lake Champlain near Ticonderoga. Map #747
(NYS_A0273-78_747)**



**Map of part of the Hoosick Patent, Rensselaer county. Map #748
(NYS_A0273-78_748)**



**Map of part of the Hoosick Patent, Rensselaer county; by Beeker.
Map #750 (NYS_A0273-78_750)**



**Land Patents north from the Batten kill, Washington county. Map
#753 (NYS_A0273-78_753)**



**Map of Willsborough and adj. lands on Lake Champlain. Map #761
(NYS_A0273-78_761)**



**Township of Nettle Field; also Belvedere; Otsego county. Map #763
(NYS_A0273-78_763)**



**Survey of land for John Garnsey; 1000 acres. Map #765
(NYS_A0273-78_765)**



**Survey of land for John Garnsey, on Susquehanna river. Map #766
(NYS_A0273-78_766)**



**Map of Mamakating, Sullivan county, granted to Catherine Lodge et
al. Map #767A (NYS_A0273-78_767A)**



**Map of Mamakating, Sullivan county, granted to Catherine Lodge et
al. Map #767B (NYS_A0273-78_767B)**



**Map of Lake's Patent, adjoining the Wallumschack Patent. Map #770A
(NYS_A0273-78_770A)**



**Map of Lake's Patent adjoining Wallumschack Patent. Map #770B
(NYS_A0273-78_770B)**



Locations in the Western Country. Map #772 (NYS_A0273-78_772)



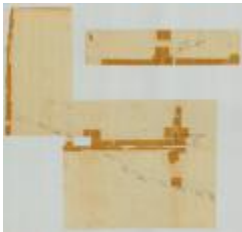
Map of Lynottville, between Goldsboro and Franklin townships. Map #773 (NYSA_A0273-78_773)



Line from outlet of Salmon river, south 60 degrees east, 35 miles; also from near Oneida lake and Wood creek. Map #776 (NYSA_A0273-78_776)



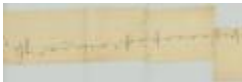
Map of road from Fort George to the river Chazy. Map #777A (NYSA_A0273-78_777A)



Map of road from Fort George to the river Chazy. Map #777B (NYSA_A0273-78_777B)



Map of road from the Oleout to the Cayuga lake. Map #778A (NYSA_A0273-78_778A)



Map of road from the Oleout to the Cayuga lake. Map #778B (NYSA_A0273-78_778B)



Map of road from the Oleout to the Cayuga lake. Map #778C (NYSA_A0273-78_778C)



Map of township of Schenectady. Map #781 (NYSA_A0273-78_781)



Hasenclever's Patent on Canada creek, Herkimer county, adjoins Cosby's Manor. Map #784 (NYSA_A0273-78_784)



Map of the town of Marletown on Esopus creek. Map #786 (NYSA_A0273-78_786)



Map of second Township in Benson. Map #788 (NYSA_A0273-78_788)



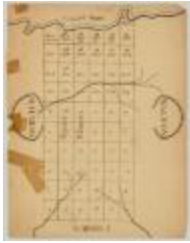
Map of Canadian Refugee Lands in Clinton county and Township of Mooers on Lake Champlain. Map #789 (NYSA_A0273-78_789)



Proposed Town on Niagara river. Map #791 (NYSA_A0273-78_791)



Lands near Schroon Lake; Platt's Road Patent; Hoffman, etc. Map #793 (NYSA_A0273-78_793)



Map of Gage's Patent with Subdivisions, on Canada creek. Map #796 (NYSA_A0273-78_796)



Old Military Tract, Township 6, Clinton county and Township 7, Franklin county. Map #798 (NYSA_A0273-78_798)



Old Military Tract, Township 3, Clinton county; granted to Benj. Birdsall. Map #799 (NYSA_A0273-78_799)



Map of Lott's Patent, also of Magin's Patent. Map #803 (NYSA_A0273-78_803)



Map of land at Niagara Falls, part of Mile Strip. Map #805 (NYSA_A0273-78_805)



Map of Hoffman Township on Scaroon lake. Essex county. Map #806 (NYSA_A0273-78_806)



Land of Ezra L'Hommedieu at the head of Seneca lake. Map #809 (NYSA_A0273-78_809)



Map of land adjacent to Scroon lake. Map #810 (NYSA_A0273-78_810)



Lands of Philip Schuyler, with others adjoining. Map #811 (NYSA_A0273-78_811)



Land between Seneca lake and Lake Ontario. Map #813 (NYSA_A0273-78_813)



Same as Map No. 813. Map #814 (NYSA_A0273-78_814)



Lands of W.J. Vredenburg, John Lansing, Jr., and Various others adjacent to Friends Settlement. Map #815 (NYSA_A0273-78_815)



**Coxe's Patent, also Hamden Tract, on Susquehanna river. Map #820
(NYSA_A0273-78_820)**



**Map of land given to the Canadian and Nova Scotia Refugee's.
Clinton county. Map #826A (NYSA_A0273-78_826A)**



**Map of Canadian Refugee Lands, Clinton county. Map #826B
(NYSA_A0273-78_826B)**



**Maps of Corporation Lands at Fort Hunter, Montgomery county. Map
#828 (NYSA_A0273-78_828)**



**Lands and various grants at Fort Hunter, Montgomery county. Map
#829 (NYSA_A0273-78_829)**



**Lysander, No. 1, Oswego and Onondaga counties. Map #831
(NYSA_A0273-78_831)**



Hannibal, No. 2, Oswego county. Map #832 (NYSA_A0273-78_832)



Cato, No. 3, Cayuga county. Map #833 (NYSA_A0273-78_833)



Brutus, No. 4, Cayuga county. Map #834 (NYSA_A0273-78_834)



Camillus, No. 5, Onondaga county. Map #835 (NYSA_A0273-78_835)



Cicero, No. 6, Onondaga county. Map #836 (NYSA_A0273-78_836)



Manlius, No. 7, Onondaga county. Map #837 (NYSA_A0273-78_837)



Aurelius, No. 8, Cayuga county. Map #838 (NYSA_A0273-78_838)



Marcellus, No. 9, Onondaga county. Map #839 (NYSA_A0273-78_839)



Pompey, No. 10, Onondaga county. Map #840 (NYSA_A0273-78_840)



Romulus, No. 11, Seneca county. Map #841 (NYS A0273-78_841)



Scipio, No. 12, Cayuga county. Map #842 (NYS A0273-78_842)



Sempronius, No. 13, Cayuga county. Map #843 (NYS A0273-78_843)



Tully, No. 14, Cortland and Onondaga counties. Map #844 (NYS A0273-78_844)



Fabius No. 13, Cortland and Onondaga counties. Map #845 (NYS A0273-78_845)



Ovid, No. 16, Seneca county. Map #846 (NYS A0273-78_846)



Milton, No. 17, Tompkins and Cayuga counties. Map #847 (NYS A0273-78_847)



**Locke, No. 18, Tompkins and Cayuga counties. Map #848
(NYSA_A0273-78_848)**



Homer, No. 19, Cortland county. Map #849 (NYSA_A0273-78_849)



Solon, No. 20, Cortland county. Map #850 (NYSA_A0273-78_850)



Hector, No. 21, Tompkins county. Map #851 (NYSA_A0273-78_851)



Ulysses, No. 22, Tompkins county. Map #852 (NYSA_A0273-78_852)



Dryden, No. 23, Tompkins County. Map #853 (NYSA_A0273-78_853)



Virgil, No. 24, Cortland county. Map #854 (NYSA_A0273-78_854)



Cincinnatus, No. 25, Cortland county. Map #855 (NYSA_A0273-78_855)



Junius, No. 26, Seneca county. Map #856 (NYSA_A0273-78_856)



Galen, No. 27, Wayne county. Map #857 (NYSA_A0273-78_857)



Map of Kayaderosra Patent, Saratoga county. Map #858 (NYSA_A0273-78_858)



Map of Mayfield Patent, Fulton county; 15,000 acres. Map #862 (NYSA_A0273-78_862)



Map of part of Mayfield Patent, Fulton county. Map #870 (NYSA_A0273-78_870)



Rudolph Staley's tract, 34,000 acres, also Conradt Frank's tract, 3000 acres at Burnet Field. Map #873 (NYSA_A0273-78_873)



Map of lots in the village of Johnstown, Fulton county. Map #875 (NYSA_A0273-78_875)



Part of William Wood's Patent; forfeited by John Wetherhead. Map #876 (NYSA_A0273-78_876)



Map of Stone Arabia Patent, Alexander's Patent, Depeyster's and Van Slyck's patent. Map #879 (NYSA_A0273-78_879)



Map of the village of Johnstown, Fulton county. Map #880 (NYSA_A0273-78_880)



Map of Chuctinunda town on the Mohawk river; by J. V. Alen. Map #881 (NYSA_A0273-78_881)



Kayaderosera Patent, 8th, 9th and 10th allotment. Part of Saratoga Patent. Map #882 (NYSA_A0273-78_882)



Map of Wallomsack Patent and lands adjoining, Rensselaer Co. Map #883 (NYSA_A0273-78_883)



Map of Wallomsack Patent; also Snyders Patent called Mapletown. Map #884 (NYSA_A0273-78_884)



Kingsborough Patent, Lot No. 399, Fulton County. Map #885 (NYSA_A0273-78_885)



Map of Thomas Wenham's grant on Mohawk river (Oriskany patent); also land north of Cosby's Manor. Map #886A (NYSA_A0273-78_886A)



Map of Thomas Wenham's grant on Mohawk river (Oriskany patent); also land north of Cosby's Manor. Map #886B (NYSA_A0273-78_886B)



Kayaderosera Patent, Allotments Nos. 17 to 25, except No. 21, Saratoga county. Map #888 (NYSA_A0273-78_888)



Kingsborough Patent, Lots 7, 8, 9, and 10, Fulton Co. Map #891A (NYSA_A0273-78_891A)



**Kingsborough Patent, Lots 7, 8, 9, and 10, Fulton Co. Map #891B
(NYS_A0273-78_891B)**



**Kayaderosera Patent, Line between Lots 11 and 12. Map #892
(NYS_A0273-78_892)**



**Return of Civil War Officers and Enlisted Men Who Have Been in the
Military or Naval Service (NYS_A0389-78_2_V5)**



**Return of Civil War Officers and Enlisted Men Who Have Died While
in Service, Volume 6, pages 665-666 (NYS_A0389-78_3_V6_p665-
666)**



**Construction - Proposed Design for New York State Capitol
(NYS_A1874_DesignDrawing)**



**Condition of the work on the new Capitol at Albany, N.Y.,
photographs 02-05 (NYS_A1897-78_02_03_04_05)**



**Condition of the work on the new Capitol at Albany, N.Y.,
photographs 06-09 (NYS_A1897-78_06_07_08_09)**



**Condition of the work on the new Capitol at Albany, N.Y., photograph
10 (NYS_A1897-78_10)**



Condition of the work on the new Capitol at Albany, N.Y., photograph 11 (NYS A1897-78_11)



Condition of the work on the new Capitol at Albany, N.Y., photograph 12 (NYS A1897-78_12)



Condition of the work on the new Capitol at Albany, N.Y., photograph 13 (NYS A1897-78_13)



Condition of the work on the new Capitol at Albany, N.Y., photograph 14 (NYS A1897-78_14)



Condition of the work on the new Capitol at Albany, N.Y., photograph 15 (NYS A1897-78_15)



Condition of the work on the new Capitol at Albany, N.Y., photograph A (NYS A1897-78_A)



Condition of the work on the new Capitol at Albany, N.Y., photograph B (NYS A1897-78_B)



Condition of the work on the new Capitol at Albany, N.Y., photograph C (NYS A1897-78_C)



Condition of the work on the new Capitol at Albany, N.Y., photograph D (NYS A1897-78_D)



Education. Nursing class (NYS A3045-78_242)



France - "Napoleon Crossing the Alps" by Jacques-Louis David (NYS A3045-78_5467)



General Ulysses S. Grant and staff (NYS A3045-78_15182)



Italy. Paestum. Temple of Neptune (Poseidon) (NYS A3045-78_A7582)



Niagara Falls. Old Terrapin Tower and Horseshoe Falls. (NYS A3045-78_A10401)



Lumber slide, feeder and lumbermen (NYS A3045-78_D47_AZ192)



Loggers. Unidentified print of two men near a timber conveyor structure (NYSA_A3045-78_D47_AZ218)



N.Y. Map Catskill Mts (NYSA_A3045-78_D47_Cc)



New York Catskill Mountains from North Mountain (NYSA_A3045-78_D47_CcA3)



New York Catskill Mountains, panorama northeast from Fly Mountain (NYSA_A3045-78_D47_CcA4)



N.Y. Catskill Mts. Kaaterskill Falls. Winter. (NYSA_A3045-78_D47_CcK2)



New York Lake Champlain bluff point, Singing Sands (NYSA_A3045-78_D47_ChB6)



Hop City, 3 miles from Cooperstown (NYSA_A3045-78_D47_CpY)



Group of Hop Pickers (NYS A3045-78_D47_CpY2)



Sheep on the Green, Central Park, New York City (NYS A3045-78_D47_NC56)



N.Y. Feeding the Swans. (NYS A3045-78_D47_NC57)



N.Y. New York City. Farragut Statue (St. Gaudens) (NYS A3045-78_D47_NE3)



N.Y., New York City. Peter Cooper Monument (St. Gaudens) Cooper Union (NYS A3045-78_D47_NE24)



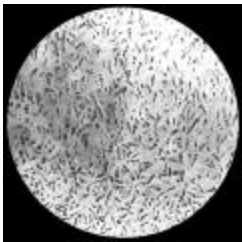
New York City. Franklin Statue. Printing House Square. (NYS A3045-78_D47_NE34)



N.Y. New York. Horace Greeley Statue by J.Q.A. Ward, Printing House Square (NYS_A3045-78_D47_NE36)



N.Y. Dewitt Clinton Statue, Chamber of Commerce Building (NYS_A3045-78_D47_NE211)



Hyaline cartilage (NYS_A3045-78_OHH)



Canal Lock. Little Falls, N. Y. (NYS_A3045-78_X_921_Color)



Larva of Green Maple Worm. Xylina Antennata (NYS_A3045-78_X_1005_Color)



Man driving an oxen cart (NYS_A3045-78_X_2911)



Oliver Wendell Holmes, Sr. (NYS_A3045-78_X_2984)



Ontario County Courthouse, Canandaigua (NYSA_A3045-78_X_3117)



Erie canal aqueduct near Genesee River, Rochester (NYSA_A3045-78_X_3118)



Triple Cascade and Rainbow Fall, Watkins Glen, N. Y. (NYSA_A3045-78_X_3272_Color)



Panorama of southwest showing Upper Gorge, Middle Valley and Erie Railroad Bridge. Portage, N. Y. (NYSA_A3045-78_X_3529_Color)



Home of the muskrat, New Berlin, N. Y. (NYSA_A3045-78_X_3798_Color)



Marsh, New Berlin, N. Y. (NYSA_A3045-78_X_3799_Color)



Muskrat lodge, Chatham, N. Y. (NYSA_A3045-78_X_3800_Color)



Muskrat trap (NYSA_A3045-78_X_3802_Color)



Muskrat burrow opened. Chatham, N. Y. (NYSA_A3045-78_X_3803_Color)



Central New York landscape (NYSA_A3045-78_X_3863_Color)



Mountain house. Pottersville, N. Y. (NYSA_A3045-78_X_4028_Color)



Black swallowtail butterfly (papilio polyvovus) (NYSA_A3045-78_X_6059_Color)



Painted beauty butterfly (NYSA_A3045-78_X_6072_Color)



Old coach owned by General Vischer and used by General Lafayette (NYSA_A3045-78_X_6233)



Frederick Douglass (NYSA_A3045-78_X_6430)



A coconut palm, Musa Isle, Miami (NYSA_A3045-78_X_6710)



Old Capitol from southeast. Albany, N.Y. (NYSA_A3045-78_X_8002)



River front mansion with servants house near Fredericksburg, Virginia (NYSA_A3045-78_X_10192)



Color Guard at West Point (NYSA_A3045-78_X_10573)



Setting up exercise. Peekskill, N. Y. (NYSA_A3045-78_X_10623)



Art gallery in Delaware Park. Buffalo, N. Y. (NYSA_A3045-78_X_12488)



A small spring near Kinderhook Creek Bridge in the vicinity of Malden Bridge, N. Y. (NYSA_A3045-78_X_14966_Color)



Magnolia blossom (NYSA_A3045-78_X_18790_Color)



Black Bear Mt. Effect of Forest Fire (NYSA_A3045_D47_AZ428)



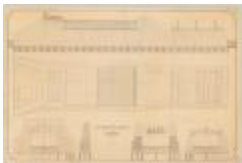
Crab Island from Hotel Champlain (NYSA_A3045_D47_ChC3)



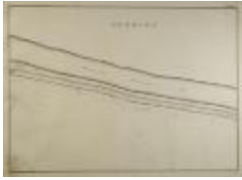
Fort Ticonderoga. Panorama of Ruins from South, Old Ditch in Foreground (NYSA_A3045_D47_TiG41)



Register of United States Colored Troops who filed claims against the federal government (NYSA_A4160-78)



Plan for aqueduct across Wood Creek at Fort Edward (NYSA_B0292-85_V011_07)



Map of the Erie Canal and Mohawk River running through the Town of Florida in Montgomery County (NYSA_B0292-85_V031_31)



Map of the Erie Canal and Mohawk River running through the Town of Florida in Montgomery County (NYSA_B0292-85_V031_32)



Map of the Erie Canal and Mohawk River running through the Town of Florida in Montgomery County (NYSA_B0292-85_V031_33)



Map of the Erie Canal running through the Town of Florida in Montgomery County (NYSA_B0292-85_V031_34)



Map of the Erie Canal running through the Town of Florida in Montgomery County (NYSA_B0292-85_V031_35)



Map of the Erie Canal running through the Towns of Florida and Glen and across the Schoharie Creek (NYSA_B0292-85_V031_36)



Map of the Enlargement of the Erie Canal. Section 50 (NYSA_B0292-85_V054_50)



Map of the Enlargement of the Erie Canal. Section 51 (NYSA_B0292-85_V054_52)



Condition of the work on the new capitol at Albany, N.Y.
(NYSA_B0701-85_B2_F06)



Condition of the work on the new capitol at Albany, N.Y.
(NYSA_B0701-85_B2_F07)



Survey of lands under water for William H. Morris, et al (NYSA_B2321-11_18690108_Morris_etal)



Survey of lands under water for Henry C. Murphy (NYSA_B2321-11_18690108_Murphy_01)



Survey of lands under water for Henry C. Murphy (NYSA_B2321-11_18690108_Murphy_02)



Survey of lands under water for Henry F. Durant (NYSA_B2321-11_18690113_Durant)



Survey of lands under water for Walter R. J. Jones (NYSA_B2321-11_18690126_Jones_01)



Survey of lands under water for Walter R. J. Jones (NYSA_B2321-11_18690126_Jones_02)



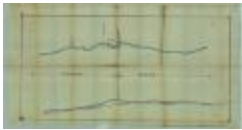
Survey of lands under water for Odell S. Hathaway (NYSA_B2321-11_18690407_Hathaway)



Survey of lands under water for Elizabeth L. Chrystie (NYSA_B2321-11_18690416_Chrystie_01)



Survey of lands under water for Elizabeth L. Chrystie (NYSA_B2321-11_18690416_Chrystie_02)



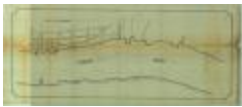
Survey of lands under water for Jacob Gillis (NYSA_B2321-11_18690416_Gillis)



Survey of lands under water for Robert A. Forsyth (NYSA_B2321-11_18690422_Forsyth_01)



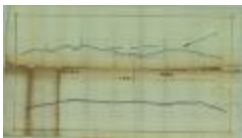
Survey of lands under water for Robert A. Forsyth (NYSA_B2321-11_18690422_Forsyth_02)



Survey of lands under water for Robert A. Forsyth (NYSA_B2321-11_18690422_Forsyth_03)



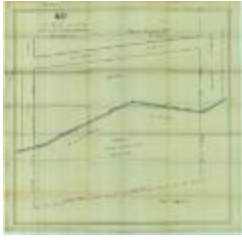
Survey of lands under water for Robert A. Forsyth (NYSA_B2321-11_18690422_Forsyth_04)



Survey of lands under water for Robert A. Forsyth (NYSA_B2321-11_18690422_Forsyth_05)



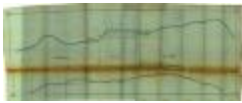
Survey of lands under water for Julia E. Leroy (NYSA_B2321-11_18690422_Leroy_01)



Survey of lands under water for Julia E. Leroy (NYSA_B2321-11_18690422_Leroy_02)



Survey of lands under water for James L. Hull (NYSA_B2321-11_18690424_Hull_01)



Survey of lands under water for James L. Hull (NYSA_B2321-11_18690424_Hull_02)



Survey of lands under water for Jacob Loeb (NYSA_B2321-11_18690424_Loeb_01)



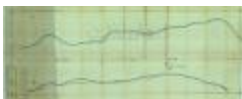
Survey of lands under water for Jacob Loeb (NYSA_B2321-11_18690424_Loeb_02)



Survey of lands under water for Albert Palmer (NYSA_B2321-11_18690424_Palmer)



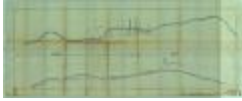
Survey of lands under water for Lois R. Birdsall (NYSA_B2321-11_18690426_Birdsall_01)



Survey of lands under water for Lois R. Birdsall (NYSA_B2321-11_18690426_Birdsall_02)



Survey of lands under water for Lois R. Birdsall (NYSA_B2321-11_18690426_Birdsall_03)



Survey of lands under water for Elbert H. Champlin (NYSA_B2321-11_18690426_Champlin_01)



Survey of lands under water for Elbert H. Champlin (NYSA_B2321-11_18690426_Champlin_02)



Survey of lands under water for Josiah G. Clark (NYSA_B2321-11_18690426_Clark)



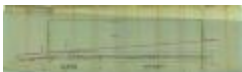
Survey of lands under water for Charles H. Meade & Thomas Taft (NYSA_B2321-11_18690426_Meade-Taft_01)



Survey of lands under water for Charles H. Meade & Thomas Taft (NYSA_B2321-11_18690426_Meade-Taft_02)



Survey of lands under water for Charles H. Meade & Thomas Taft (NYSA_B2321-11_18690426_Meade-Taft_03)



Survey of lands under water for Thomas Aldridge (NYSA_B2321-11_18690505_Aldridge_01)



Survey of lands under water for Thomas Aldridge (NYSA_B2321-11_18690505_Aldridge_02)



Survey of lands under water for George H. Brown (NYSA_B2321-11_18690505_Brown_01)



Survey of lands under water for George H. Brown (NYSA_B2321-11_18690505_Brown_02)



Survey of lands under water for George H. Brown (NYSA_B2321-11_18690505_Brown_03)



Survey of lands under water for Walter T. & James R. Klots (NYSA_B2321-11_18690507_Klots_01)



Survey of lands under water for Walter T. & James R. Klots (NYSA_B2321-11_18690507_Klots_02)



Survey of lands under water for John Lewis Bergen (NYSA_B2321-11_18690520_Bergen)



Survey of lands under water for Lefert L. & Rebecca L. Bergen & Catharine M. Wykoff (NYSA_B2321-11_18690520_Bergen-Bergen-Wykoff)



Survey of lands under water for Thomas Hunt (NYSA_B2321-11_18690520_Hunt)



Survey of lands under water for Knickerbocker Ice Company (NYSA_B2321-11_18690524_Knickerbocker_Ice_Co_01)



Survey of lands under water for Knickerbocker Ice Company (NYSA_B2321-11_18690524_Knickerbocker_Ice_Co_02)



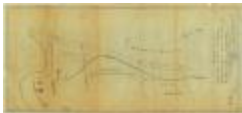
**Survey of lands under water for George C. Hubbell (Richard Martin)
(NYSA_B2321-11_18690612_Hubbell_Martin)**



**Survey of lands under water for Washington Ice Company
(NYSA_B2321-11_18690612_Washington_Ice_Co)**



Survey of lands under water for Aaron Machin (NYSA_B2321-11_18690616_Machin_01)



Survey of lands under water for Aaron Machin (NYSA_B2321-11_18690616_Machin_02)



Survey of lands under water for Aaron Machin (NYSA_B2321-11_18690616_Machin_03)



Survey of lands under water for Village of Yonkers (NYSA_B2321-11_18690616_Village_of_Yonkers)



Survey of lands under water for John R. Booth, David White & Albert Chapman (NYSA_B2321-11_18690617_Booth-White-Chapman)



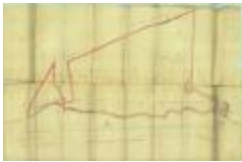
**Survey of lands under water for Eliza R. Browne & Samuel B. Duryea
(NYSA_B2321-11_18690618_Browne-Duryea)**



Survey of lands under water for Ehrhard A. Ahl (NYSA_B2321-11_18690619_Ahl_01)



Survey of lands under water for Ehrhard A. Ahl (NYSA_B2321-11_18690619_Ahl_02)



Survey of lands under water for Daniel & John L. DeNoyelles (NYSA_B2321-11_18690619_DeNoyelles)



Survey of lands under water for J.C. Bancroft Davis (NYSA_B2321-11_18690625_Davis_01)



Survey of lands under water for J.C. Bancroft Davis (NYSA_B2321-11_18690625_Davis_02)



Survey of lands under water for Josephine A. Roe (NYSA_B2321-11_18690625_Roe_01)



Survey of lands under water for Josephine A. Roe (NYSA_B2321-11_18690625_Roe_02)



Survey of lands under water for Josephine A. Roe (NYSA_B2321-11_18690625_Roe_03)



**Survey of lands under water for Boston, Hartford & Erie Ferry
Extension Railroad Company (NYSA_B2321-
11_18690703_Boston_Hartford_and_Erie_Ferry_Ext_RR_Co_01)**



**Survey of lands under water for Boston, Hartford & Erie Ferry
Extension Railroad Company (NYSA_B2321-
11_18690703_Boston_Hartford_and_Erie_Ferry_Ext_RR_Co_02)**



**Survey of lands under water for Boston, Hartford & Erie Ferry
Extension Railroad Company (NYSA_B2321-
11_18690703_Boston_Hartford_and_Erie_Ferry_Ext_RR_Co_03)**



**Survey of lands under water for William Beard (NYSA_B2321-
11_18690710_Beard_01)**



**Survey of lands under water for William Beard (NYSA_B2321-
11_18690710_Beard_02)**



**Survey of lands under water for Robert Martin (NYSA_B2321-
11_18690714_Martin)**



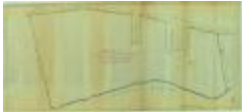
**Survey of lands under water for William C. Anderson (NYSA_B2321-
11_18690715_Anderson_01)**



Survey of lands under water for William C. Anderson (NYSA_B2321-11_18690715_Anderson_02)



Survey of lands under water for William C. Anderson (NYSA_B2321-11_18690715_Anderson_03)



Survey of lands under water for George Frazier (NYSA_B2321-11_18690721_Frazier_01)



Survey of lands under water for George Frazier (NYSA_B2321-11_18690721_Frazier_02)



Survey of lands under water for George Frazier (NYSA_B2321-11_18690721_Frazier_03)



Survey of lands under water for George Frazier (NYSA_B2321-11_18690721_Frazier_04)



Survey of lands under water for George Frazier (NYSA_B2321-11_18690721_Frazier_05)



**Survey of lands under water for James & George Stewart
(NYSA_B2321-11_18690721_Stewart_01)**



**Survey of lands under water for James & George Stewart
(NYSA_B2321-11_18690721_Stewart_02)**



**Survey of lands under water for James & George Stewart
(NYSA_B2321-11_18690721_Stewart_03)**



**Survey of lands under water for James & George Stewart
(NYSA_B2321-11_18690721_Stewart_04)**



**Survey of lands under water for James & George Stewart
(NYSA_B2321-11_18690721_Stewart_05)**



**Survey of lands under water for Caroline A. Brett (NYSA_B2321-
11_18690723_Brett)**



Survey of lands under water for Cothers (Joseph Lomas, Alanson Y. Weller & Stephen Saunters) (NYSA_B2321-11_18690723_Cothers_Lomas-Weller-Saunters)



Survey of lands under water for Noah Worrall (NYSA_B2321-11_18690728_Worrall_01)



Survey of lands under water for Noah Worrall (NYSA_B2321-11_18690728_Worrall_02)



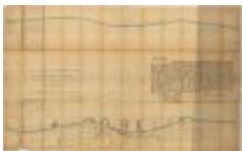
Survey of lands under water for Richmond Iron Mining Company (NYSA_B2321-11_18690909_Richmond_Iron_Mining_Co)



Survey of lands under water for Washington Ice Co. & Zion Lutheran Church (NYSA_B2321-11_18691020_Washington_Ice_Co-Zion_Lutheran_Church)



Survey of lands under water for Samuel S. Bent (NYSA_B2321-11_18691023_Bent)



Survey of lands under water for Georgiana Bashford (NYSA_B2321-11_18691112_Bashford)



Survey of lands under water for Gouvenuer M., John W. & David M. Armstrong, et al (NYSA_B2321-11_18691113_Armstrong_01)



Survey of lands under water for Gouvenuer M., John W. & David M. Armstrong, et al (NYSA_B2321-11_18691113_Armstrong_02)



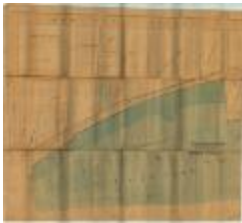
Survey of lands under water for Margarett Wade, Charles H., Sarah A. & Mary VanAmburgh (NYSA_B2321-11_18691113_Wade-VanAmburgh_01)



Survey of lands under water for Margarett Wade, Charles H., Sarah A. & Mary VanAmburgh (NYSA_B2321-11_18691113_Wade-VanAmburgh_02)



Survey of lands under water for Howard L. Parmele & Catharine A. Hedges (NYSA_B2321-11_18691115_Parmele-Hedges_01)



Survey of lands under water for Howard L. Parmele & Catharine A. Hedges (NYSA_B2321-11_18691115_Parmele-Hedges_02)



Survey of lands under water for Daniel Rogers (NYSA_B2321-11_18691115_Rogers_01)



Survey of lands under water for Daniel Rogers (NYSA_B2321-11_18691115_Rogers_02)



Survey of lands under water for Nicholas W. Duryea (NYSA_B2321-11_18691204_Duryea)



Survey of lands under water for Jeny Faber (NYSA_B2321-11_18691204_Faber)



Survey of lands under water for Archibald Russell (NYSA_B2321-11_18691204_Russell)



Survey of lands under water for John B. James (NYSA_B2321-11_18691208_James)



Survey of lands under water for Josiah Rich, et al (NYSA_B2321-11_18691208_Rich_etal_01)



Survey of lands under water for Josiah Rich, et al (NYSA_B2321-11_18691208_Rich_etal_02)



Survey of lands under water for Jeremiah P. B. Dodge (NYSA_B2321-11_18691209_Dodge)



Survey of lands under water for S. Warring Dumont (NYSA_B2321-11_18691209_Dumont)



Survey of lands under water for Port Washington Dock Company (NYSA_B2321-11_18691213_Port_Washington_Dock_Co)



**Monthly Account of Operations at Mongaup Tannery
(NYSL_SC17820_B14_F10_005)**
