



Register of men who served in the Civil War from the town of Patterson, Putnam County (NYSA_13774-83_Putnam_Patterson)



Register of men who served in the Civil War from the Town of Macomb, St. Lawrence County (NYSA_13774-83_StLawrence_Macomb)



Civil War muster roll abstract for Elijah Penny of the 4th Heavy Artillery (NYSA_13775-83_ArtilleryHeavy_04_4256_Penny_Elijah)



Civil War muster roll abstract for Antonio Hernandez of the 8th Cavalry (NYSA_13775-83_Cavalry_08_1430_Hernandez_Antonio)



Civil War muster roll abstract for Joseph C. Rodriguez of the 9th Infantry (NYSA_13775-83_Infantry_009_1323_Rodriguez_Joseph_C_p2)



Civil War muster roll abstract for Esteban Feliz of the 39th Infantry (NYSA_13775-83_Infantry_039_0988_Feliz_Esteban)



Civil War muster roll abstract for Emanuel Gomez of the 39th Infantry (NYSA_13775-83_Infantry_039_1229_Gomez_Emanuel)



**Civil Roll muster roll abstract for Jacinto Gomez of the 39th Infantry
(NYSA_13775-83_Infantry_039_1230_Gomez_Jacinto)**



**Civil War muster roll abstract for Juan Gonzalez of the 39th Infantry
(NYSA_13775-83_Infantry_039_1231_Gonzalez_Juan)**



**Civil War muster roll abstract for Juan Hernandez of the 39th Infantry
(NYSA_13775-83_Infantry_039_1445_Hernandez_Juan)**



**Civil Roll muster roll abstract for Juan Rodriguez of the 39th Infantry
(NYSA_13775-83_Infantry_039_2869_Rodriguez_Juan)**



**Civil War muster roll abstract for Pedro Sanchez of the 39th Infantry
(NYSA_13775-83_Infantry_039_2999_Sanchez_Pedro)**



**Civil War muster roll abstract for Alfred C. Penny of the 82nd Infantry
(NYSA_13775-83_Infantry_082_2467_Penny_Alfred_C)**



**Civil War muster roll abstract for Archibald Penny of the 83rd Infantry
(NYSA_13775-83_Infantry_083_1614_Penny_Archibald)**



**Civil Roll muster roll abstract for Manuel Garcia of the 84th Infantry
(NYSA_13775-83_Infantry_084_0639_Garcia_Manuel)**



**Civil Roll muster roll abstract for Harrison Clark of the 125th Infantry
(NYSA_13775-83_Infantry_125_0283_Clark_Harrison)**



**Civil War muster roll abstract for James Johnson of the 127th
Infantry (NYSA_13775-83_Infantry_127_710_Johnson)**



**Civil War muster roll abstract for Manuel Herrera of the 178th Infantry
(NYSA_13775-83_Infantry_178_866_Herrera_Manuel)**



**Civil War muster roll abstract for Francisco Pena of the Independent
Battalion of Infantry--Les Enfants Perdu (NYSA_13775-
83_Infantry_Independent_Enfants_0912_Pena_Francisco)**



**Civil Roll muster roll abstract for Jasper Towns of the 31st United
States Colored Troops (NYSA_13775-
83_USCT_0031_1230_Towns_Jasper)**



**Civil Roll muster roll abstract for Abram Vroman of the 31st United
States Colored Troops (NYSA_13775-
83_USCT_0031_1269_Vroman_Abram)**



**Civil War muster roll abstract for Elisha Odell of the 20th Regiment,
United States Colored Troops (NYSA_13775-
83_USCT_20_Odell_Elisha)**



Civil War muster roll abstract for Henry Oliver of the 20th Regiment, United States Colored Troops (NYSA_13775-83_USCT_20_Oliver_Henry)



Civil War muster roll abstract for Richard Oliver of the 20th Regiment, United States Colored Troops (NYSA_13775-83_USCT_20_Oliver_Richard)



Civil War muster roll abstract for Samuel Oliver of the 20th Regiment, United States Colored Troops (NYSA_13775-83_USCT_20_Oliver_Samuel)



Civil War muster roll abstract for William H. Oliver of the 20th Regiment, United States Colored Troops (NYSA_13775-83_USCT_20_Oliver_William_H)



Civil War muster roll abstract for William Oldstead of the 20th Regiment, United States Colored Troops (NYSA_13775-83_USCT_20_Olmstead_William)



Civil War muster roll abstract for Charles Ongway of the 20th Regiment, United States Colored Troops (NYSA_13775-83_USCT_20_Ongway_Charles)



Civil War muster roll abstract for Peter Osborn of the 20th Regiment, United States Colored Troops (NYSA_13775-83_USCT_20_Osborn_Peter)



Civil War muster roll abstract for Charles Owens of the 20th Regiment, United States Colored Troops (NYSA_13775-83_USCT_20_Owens_Charles)



Adjutant General, Special Order No. 197 (NYSA_14405-84_B9_V18_197)



Adjutant General, Special Order No. 198 (NYSA_14405-84_B9_V18_198)



Adjutant General, Special Order No. 203 (NYSA_14405-84_B9_V18_203)



Adjutant General, Special Order No. 207 1/2 (NYSA_14405-84_B9_V18_207_1-2)



Map of Township Cato (No. 3). Map #103 (NYSA_A0273-78_103)



Map of Township Pompey (No. 10). Map #110 (NYSA_A0273-78_110)



Map of Great Hardenbergh Patent. Map #140 (NYSA_A0273-78_140)



Map of the Town of White Plains, Westchester County. Map #404D (Copy) (NYSA_A0273-78_404D)



Map of Onondaga Salt Lake. Map #410 (NYSA_A0273-78_410)



Map of the Town of Kinderhook. Map #411 (NYSA_A0273-78_411)



Map of the Town of Coxsackie, Green County. Map #420 (NYSA_A0273-78_420)



Map of the Township of West Chester. Map #424 (NYSA_A0273-78_424)



Map of Fort Richmond, Staten Island. Map #427 (NYSA_A0273-78_427)



Map of lands adjoining Lake Champlain in Clinton and Essex Counties. Map #428 (NYSA_A0273-78_428)



Map of Phillipstown, Dutchess County. Map #430 (NYSA_A0273-78_430)



Map of the Town of Shawangunk, Ulster County. Map #433 (NYSA_A0273-78_433)



Plan for subdividing the State Lands south of Erie Canal and east of West Street. Map #453 (NYSA_A0273-78_453)



Map of Subdivisions of lands near Church Street, Syracuse. Map #458B (NYSA_A0273-78_458B)



Map of several pieces of land situated in the Town of Bushwick, Kings County. Map #464 (NYSA_A0273-78_464)



Map of Oriskany Patent. Oneida County. Map #465 (NYSA_A0273-78_465)



Proposed Hudson and Harlem river canal. Map #470 (NYSA_A0273-78_470)



Map of Tompkins County. Map #471 (NYSA_A0273-78_471)



Profile of the Wallkill river at Walden, Orange County. Map #472A (NYS A0273-78_472A)



Profile of the Wallkill river at Walden, Orange County. Map #472B (NYS A0273-78_472B)



Document with Profile of the Wallkill river at Walden, Orange County. Map #472C (NYS A0273-78_472C)



Lake George from original plot. Map #476A (NYS A0273-78_476A)



Lake George from original plot. Map #476B (NYS A0273-78_476B)



Map of Coarse Salt Lands at Syracuse, N. Y. Map #494 (NYS A0273-78_494)



Bluff Point, in Raquette Lake, Hamilton County. Map #500 (NYS A0273-78_500)



Map of Lake George. 1880. Map #502 (NYS A0273-78_502)



Totten and Crossfield's Purchase, Township 40 showing Raquette Lake. Map #503 (NYSA_A0273-78_503)



Totten and Crossfield's Purchase, Township 40 showing Raquette Lake. Map #503A (NYSA_A0273-78_503A)



Boundary line between the Towns of Exeter and Burlington. Map #507 (NYSA_A0273-78_507)



Map of Hoyt's Salt Block, 1st Ward, Syracuse. Map #508 (NYSA_A0273-78_508)



Corner Location of Benson Township, Jerseyfield Patent and Lawrence Patent. Map #512 (NYSA_A0273-78_512)



Macomb's Purchase. Great Lot No. 1, Township 20, Franklin County. Map #513 (NYSA_A0273-78_513)



Map of State Land in Buffalo, New York. Map #515 (NYSA_A0273-78_515)



Sempronius, Lot No. 61. Cayuga County. Map #521 (NYS A0273-78_521)



Map of Township of Lake Pleasant, Hamilton County. Map #587 (NYS A0273-78_587)



Map of State Lands, (Ne-ha-sa-ne park) Hamilton and Herkimer Co. Map #588 (NYS A0273-78_588)



Survey of Land for Pietrus Van Dreissen and John Van Dreissen. Map #622 (NYS A0273-78_622)



Survey of land for Edward Harrison and others. Map #627A (NYS A0273-78_627A)



Survey of land for Edward Harrison and others. Map #627B (NYS A0273-78_627B)



Map of Northampton Patent. also the Philip Livingston Patent. Map #639 (NYS A0273-78_639)



Survey of land for Lendert Gansevoort and James Stewart. Map #640 (NYS A0273-78_640)



Map of various grants south and adjoining map #669. Map #670 (NYS A0273-78_670)



Part of Map No. #670 including lands of Joseph Goldthwaite and others. Map #671 (NYS A0273-78_671)



Map of Long Point on Lake George. Warren County. Map #672 (NYS A0273-78_672)



Map of lands adjoining Lake George near Fort Ticonderoga. Map #673 (NYS A0273-78_673)



Map of first tract of Belvidere of George Croghan's Patent, Otsego county. Map #680 (NYS A0273-78_680)



Survey of land for Philip Livingston, Arent Stevens, Edward Collins and others. Map #692A and 692B (NYS A0273-78_692A_692B)



Long Island in Lake George, with adjacent uplands. Warren county. Map #693 (NYS A0273-78_693)



Map of Land on upper Hudson river. Map #694 (NYS A0273-78_694)



Survey of land for Alex Turner, 25,000 acres, on the Batten kill, and various others adjoining. Map #717 (NYS A0273-78_717)



Survey of land for John Lawrence, 1000 acres, north of Artillery Patent, Washington county. Map #720. (NYS A0273-78_720)



Map of township of Plattsburgh, 28,000 acres, on Lake Champlain. Map #721 (NYS A0273-78_721)



Map of Jellis Fonda, 40,000 acres, in Oneida county. Map #722 (NYS A0273-78_722)



Map of subdivision of Fonda's Patent, Oneida county. Map #723 (NYS A0273-78_723)



Delaware river, copied from a map by Metcalfe. Map #725 (NYS A0273-78_725)



Protraction of Isle La Motte, Lake Champlain, Vermont. Map #726 (NYSA_A0273-78_726)



Palmer's Purchase on the Sacondaga branch of Hudson river. Map #732 (NYSA_A0273-78_732)



Sketch of land in Steuben township, Oneida county; copy of Cockburn's survey. Map #735 (NYSA_A0273-78_735)



Townships of Hamden and Sidney with subdivisions. Map #736 (NYSA_A0273-78_736)



Townships of Chenango, Randolph, etc. Map #737 (NYSA_A0273-78_737)



Canadian and Nova Scotia Refugee Lands, Clinton county. Map #744A (NYSA_A0273-78_744A)



Canadian and Nova Scotia Refugee Lands, Clinton county. Map #744B (NYSA_A0273-78_744B)



Canadian and Nova Scotia Refugee Lands, Clinton county. Map #745A (NYSA_A0273-78_745A)



Canadian and Nova Scotia Refugee Lands, Clinton county. Map #745B (NYSA_A0273-78_745B)



**Canadian and Nova Scotia Refugee Lands, Clinton county. Map #746
(NYSA_A0273-78_746)**



**Map of lands on Lake Champlain near Ticonderoga. Map #747
(NYSA_A0273-78_747)**



**Map of part of the Hoosick Patent, Rensselaer county. Map #748
(NYSA_A0273-78_748)**



**Map of part of the Hoosick Patent, Rensselaer county; by Beeker.
Map #750 (NYSA_A0273-78_750)**



**Land Patents north from the Batten kill, Washington county. Map
#753 (NYSA_A0273-78_753)**



**Map of Willsborough and adj. lands on Lake Champlain. Map #761
(NYSA_A0273-78_761)**



**Township of Nettle Field; also Belvedere; Otsego county. Map #763
(NYS_A0273-78_763)**



**Survey of land for John Garnsey; 1000 acres. Map #765
(NYS_A0273-78_765)**



**Survey of land for John Garnsey, on Susquehanna river. Map #766
(NYS_A0273-78_766)**



**Map of Mamakating, Sullivan county, granted to Catherine Lodge et
al. Map #767A (NYS_A0273-78_767A)**



**Map of Mamakating, Sullivan county, granted to Catherine Lodge et
al. Map #767B (NYS_A0273-78_767B)**



**Map of Lake's Patent, adjoining the Wallumschack Patent. Map #770A
(NYS_A0273-78_770A)**



**Map of Lake's Patent adjoining Wallumschack Patent. Map #770B
(NYS_A0273-78_770B)**



Locations in the Western Country. Map #772 (NYS_A0273-78_772)



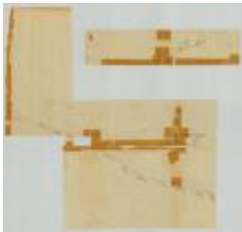
Map of Lynottville, between Goldsboro and Franklin townships. Map #773 (NYSA_A0273-78_773)



Line from outlet of Salmon river, south 60 degrees east, 35 miles; also from near Oneida lake and Wood creek. Map #776 (NYSA_A0273-78_776)



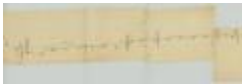
Map of road from Fort George to the river Chazy. Map #777A (NYSA_A0273-78_777A)



Map of road from Fort George to the river Chazy. Map #777B (NYSA_A0273-78_777B)



Map of road from the Oleout to the Cayuga lake. Map #778A (NYSA_A0273-78_778A)



Map of road from the Oleout to the Cayuga lake. Map #778B (NYSA_A0273-78_778B)



Map of road from the Oleout to the Cayuga lake. Map #778C (NYSA_A0273-78_778C)



Map of township of Schenectady. Map #781 (NYSA_A0273-78_781)



Hasenclever's Patent on Canada creek, Herkimer county, adjoins Cosby's Manor. Map #784 (NYSA_A0273-78_784)



Map of the town of Marletown on Esopus creek. Map #786 (NYSA_A0273-78_786)



Map of second Township in Benson. Map #788 (NYSA_A0273-78_788)



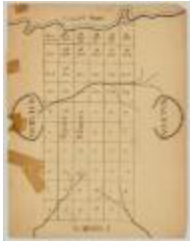
Map of Canadian Refugee Lands in Clinton county and Township of Mooers on Lake Champlain. Map #789 (NYSA_A0273-78_789)



Proposed Town on Niagara river. Map #791 (NYSA_A0273-78_791)



Lands near Schroon Lake; Platt's Road Patent; Hoffman, etc. Map #793 (NYSA_A0273-78_793)



Map of Gage's Patent with Subdivisions, on Canada creek. Map #796 (NYSA_A0273-78_796)



Old Military Tract, Township 6, Clinton county and Township 7, Franklin county. Map #798 (NYSA_A0273-78_798)



Old Military Tract, Township 3, Clinton county; granted to Benj. Birdsall. Map #799 (NYSA_A0273-78_799)



Map of Lott's Patent, also of Magin's Patent. Map #803 (NYSA_A0273-78_803)



Map of land at Niagara Falls, part of Mile Strip. Map #805 (NYSA_A0273-78_805)



Map of Hoffman Township on Scaroon lake. Essex county. Map #806 (NYSA_A0273-78_806)



Land of Ezra L'Hommedieu at the head of Seneca lake. Map #809 (NYSA_A0273-78_809)



Map of land adjacent to Scroon lake. Map #810 (NYSA_A0273-78_810)



Lands of Philip Schuyler, with others adjoining. Map #811 (NYSA_A0273-78_811)



Land between Seneca lake and Lake Ontario. Map #813 (NYSA_A0273-78_813)



Same as Map No. 813. Map #814 (NYSA_A0273-78_814)



Lands of W.J. Vredenburg, John Lansing, Jr., and Various others adjacent to Friends Settlement. Map #815 (NYSA_A0273-78_815)



**Coxe's Patent, also Hamden Tract, on Susquehanna river. Map #820
(NYS_A0273-78_820)**



**Map of land given to the Canadian and Nova Scotia Refugee's.
Clinton county. Map #826A (NYS_A0273-78_826A)**



**Map of Canadian Refugee Lands, Clinton county. Map #826B
(NYS_A0273-78_826B)**



**Maps of Corporation Lands at Fort Hunter, Montgomery county. Map
#828 (NYS_A0273-78_828)**



**Lands and various grants at Fort Hunter, Montgomery county. Map
#829 (NYS_A0273-78_829)**



**Lysander, No. 1, Oswego and Onondaga counties. Map #831
(NYS_A0273-78_831)**



Hannibal, No. 2, Oswego county. Map #832 (NYS_A0273-78_832)



Cato, No. 3, Cayuga county. Map #833 (NYS_A0273-78_833)



Brutus, No. 4, Cayuga county. Map #834 (NYSA_A0273-78_834)



Camillus, No. 5, Onondaga county. Map #835 (NYSA_A0273-78_835)



Cicero, No. 6, Onondaga county. Map #836 (NYSA_A0273-78_836)



Manlius, No. 7, Onondaga county. Map #837 (NYSA_A0273-78_837)



Aurelius, No. 8, Cayuga county. Map #838 (NYSA_A0273-78_838)



Marcellus, No. 9, Onondaga county. Map #839 (NYSA_A0273-78_839)



Pompey, No. 10, Onondaga county. Map #840 (NYSA_A0273-78_840)



Romulus, No. 11, Seneca county. Map #841 (NYS A0273-78_841)



Scipio, No. 12, Cayuga county. Map #842 (NYS A0273-78_842)



Sempronius, No. 13, Cayuga county. Map #843 (NYS A0273-78_843)



Tully, No. 14, Cortland and Onondaga counties. Map #844 (NYS A0273-78_844)



Fabius No. 13, Cortland and Onondaga counties. Map #845 (NYS A0273-78_845)



Ovid, No. 16, Seneca county. Map #846 (NYS A0273-78_846)



Milton, No. 17, Tompkins and Cayuga counties. Map #847 (NYS A0273-78_847)



**Locke, No. 18, Tompkins and Cayuga counties. Map #848
(NYSA_A0273-78_848)**



Homer, No. 19, Cortland county. Map #849 (NYSA_A0273-78_849)



Solon, No. 20, Cortland county. Map #850 (NYSA_A0273-78_850)



Hector, No. 21, Tompkins county. Map #851 (NYSA_A0273-78_851)



Ulysses, No. 22, Tompkins county. Map #852 (NYSA_A0273-78_852)



Dryden, No. 23, Tompkins County. Map #853 (NYSA_A0273-78_853)



Virgil, No. 24, Cortland county. Map #854 (NYSA_A0273-78_854)



Cincinnatus, No. 25, Cortland county. Map #855 (NYSA_A0273-78_855)



Junius, No. 26, Seneca county. Map #856 (NYSA_A0273-78_856)



Galen, No. 27, Wayne county. Map #857 (NYSA_A0273-78_857)



Map of Kayaderosra Patent, Saratoga county. Map #858 (NYSA_A0273-78_858)



Map of Mayfield Patent, Fulton county; 15,000 acres. Map #862 (NYSA_A0273-78_862)



Map of part of Mayfield Patent, Fulton county. Map #870 (NYSA_A0273-78_870)



Rudolph Staley's tract, 34,000 acres, also Conradt Frank's tract, 3000 acres at Burnet Field. Map #873 (NYSA_A0273-78_873)



Map of lots in the village of Johnstown, Fulton county. Map #875 (NYSA_A0273-78_875)



Part of William Wood's Patent; forfeited by John Wetherhead. Map #876 (NYSA_A0273-78_876)



Map of Stone Arabia Patent, Alexander's Patent, Depeyster's and Van Slyck's patent. Map #879 (NYSA_A0273-78_879)



Map of the village of Johnstown, Fulton county. Map #880 (NYSA_A0273-78_880)



Map of Chuctinunda town on the Mohawk river; by J. V. Alen. Map #881 (NYSA_A0273-78_881)



Kayaderosera Patent, 8th, 9th and 10th allotment. Part of Saratoga Patent. Map #882 (NYSA_A0273-78_882)



Map of Wallomsack Patent and lands adjoining, Rensselaer Co. Map #883 (NYSA_A0273-78_883)



Map of Wallomsack Patent; also Snyders Patent called Mapletown. Map #884 (NYSA_A0273-78_884)



Kingsborough Patent, Lot No. 399, Fulton County. Map #885 (NYSA_A0273-78_885)



Map of Thomas Wenham's grant on Mohawk river (Oriskany patent); also land north of Cosby's Manor. Map #886A (NYSA_A0273-78_886A)



Map of Thomas Wenham's grant on Mohawk river (Oriskany patent); also land north of Cosby's Manor. Map #886B (NYSA_A0273-78_886B)



Kayaderosera Patent, Allotments Nos. 17 to 25, except No. 21, Saratoga county. Map #888 (NYSA_A0273-78_888)



Kingsborough Patent, Lots 7, 8, 9, and 10, Fulton Co. Map #891A (NYSA_A0273-78_891A)



**Kingsborough Patent, Lots 7, 8, 9, and 10, Fulton Co. Map #891B
(NYSA_A0273-78_891B)**



**Kayaderosera Patent, Line between Lots 11 and 12. Map #892
(NYSA_A0273-78_892)**



**Return of Civil War Officers and Enlisted Men Who Have Been in the
Military or Naval Service (NYSA_A0389-78_2_V5)**



**Return of Civil War Officers and Enlisted Men Who Have Died While
in Service, Volume 6, pages 665-666 (NYSA_A0389-78_3_V6_p665-
666)**



Education. Nursing class (NYSA_A3045-78_242)



General Ulysses S. Grant and staff (NYSA_A3045-78_15182)



**Italy. Paestum. Temple of Neptune (Poseidon) (NYSA_A3045-
78_A7582)**



**Niagara Falls. Old Terrapin Tower and Horseshoe Falls.
(NYSA_A3045-78_A10401)**



Lumber slide, feeder and lumbermen (NYSA_A3045-78_D47_AZ192)



**Loggers. Unidentified print of two men near a timber conveyor
structure (NYSA_A3045-78_D47_AZ218)**



N.Y. Map Catskill Mts (NYSA_A3045-78_D47_Cc)



**New York Catskill Mountains from North Mountain (NYSA_A3045-
78_D47_CcA3)**



**New York Catskill Mountains, panorama northeast from Fly Mountain
(NYSA_A3045-78_D47_CcA4)**



**N.Y. Catskill Mts. Kaaterskill Falls. Winter. (NYSA_A3045-
78_D47_CcK2)**



New York Lake Champlain bluff point, Singing Sands (NYSA_A3045-78_D47_ChB6)



Hop City, 3 miles from Cooperstown (NYSA_A3045-78_D47_CpY)



Group of Hop Pickers (NYSA_A3045-78_D47_CpY2)



Sheep on the Green, Central Park, New York City (NYSA_A3045-78_D47_NC56)



N.Y. Feeding the Swans. (NYSA_A3045-78_D47_NC57)



N.Y. New York City. Farragut Statue (St. Gaudens) (NYSA_A3045-78_D47_NE3)



N.Y., New York City. Peter Cooper Monument (St. Gaudens) Cooper Union (NYSA_A3045-78_D47_NE24)



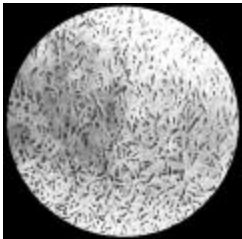
**New York City. Franklin Statue. Printing House Square.
(NYS_A3045-78_D47_NE34)**



**N.Y. New York. Horace Greeley Statue by J.Q.A. Ward, Printing
House Square (NYS_A3045-78_D47_NE36)**



**N.Y. Dewitt Clinton Statue, Chamber of Commerce Building
(NYS_A3045-78_D47_NE211)**



Hyaline cartilage (NYS_A3045-78_OHH)



Canal Lock. Little Falls, N. Y. (NYS_A3045-78_X_921_Color)



**Larva of Green Maple Worm. Xylina Antennata (NYS_A3045-
78_X_1005_Color)**



Man driving an oxen cart (NYS_A3045-78_X_2911)



Union General Winfield Scott Hancock. (NYSA_A3045-78_X_2981)



Oliver Wendell Holmes, Sr. (NYSA_A3045-78_X_2984)



Civil War troops (NYSA_A3045-78_X_3067)



Civil War camp with positioned cannon (NYSA_A3045-78_X_3070)



Union Army method of destroying railroads (NYSA_A3045-78_X_3097)



Bomb proof, Fort Sedgwick, Battle of Petersburg (NYSA_A3045-78_X_3099)



Ontario County Courthouse, Canandaigua (NYSA_A3045-78_X_3117)



Erie canal aqueduct near Genesee River, Rochester (NYSA_A3045-78_X_3118)



Triple Cascade and Rainbow Fall. Watkins Glen, N. Y. (NYSA_A3045-78_X_3272_Color)



Panorama of southwest showing Upper Gorge, Middle Valley and Erie Railroad Bridge. Portage, N. Y. (NYSA_A3045-78_X_3529_Color)



Home of the muskrat. New Berlin, N. Y. (NYSA_A3045-78_X_3798_Color)



Marsh. New Berlin, N. Y. (NYSA_A3045-78_X_3799_Color)



Muskrat lodge. Chatham, N. Y. (NYSA_A3045-78_X_3800_Color)



Muskrat trap (NYSA_A3045-78_X_3802_Color)



Muskrat burrow opened. Chatham, N. Y. (NYSA_A3045-78_X_3803_Color)



Central New York landscape (NYSA_A3045-78_X_3863_Color)



Mountain house. Pottersville, N. Y. (NYSA_A3045-78_X_4028_Color)



Black swallowtail butterfly (papilio polyvovus) (NYSA_A3045-78_X_6059_Color)



Painted beauty butterfly (NYSA_A3045-78_X_6072_Color)



Old coach owned by General Vischer and used by General Lafayette (NYSA_A3045-78_X_6233)



Frederick Douglass (NYSA_A3045-78_X_6430)



A coconut palm, Musa Isle, Miami (NYSA_A3045-78_X_6710)



Old Capitol from southeast. Albany, N.Y. (NYSA_A3045-78_X_8002)



River front mansion with servants house near Fredericksburg, Virginia (NYSA_A3045-78_X_10192)



Color Guard at West Point (NYSA_A3045-78_X_10573)



Setting up exercise. Peekskill, N. Y. (NYSA_A3045-78_X_10623)



Art gallery in Delaware Park. Buffalo, N. Y. (NYSA_A3045-78_X_12488)



A small spring near Kinderhook Creek Bridge in the vicinity of Malden Bridge, N. Y. (NYSA_A3045-78_X_14966_Color)



Magnolia blossom (NYSA_A3045-78_X_18790_Color)



Black Bear Mt. Effect of Forest Fire (NYSA_A3045_D47_AZ428)



Crab Island from Hotel Champlain (NYSA_A3045_D47_ChC3)



Fort Ticonderoga. Panorama of Ruins from South, Old Ditch in Foreground (NYSA_A3045_D47_TiG41)



Map of the Enlargement of the Erie Canal. Section 50 (NYSA_B0292-85_V054_50)



Map of the Enlargement of the Erie Canal. Section 51 (NYSA_B0292-85_V054_52)



U.S. Service Poster, Civil War (NYSA_B0462)



Abstract of muster roll, James C. Spry (NYSA_B0807-85_USCT26_SpryJamesC)



Survey of lands under water for John M. Martin, Reyanna Kemp & John B. Daly (NYSA_B2321-11_18650307_Martin-Kemp-Daly_01)



Survey of lands under water for John M. Martin, Reyanna Kemp & John B. Daly (NYSA_B2321-11_18650307_Martin-Kemp-Daly_02)



Survey of lands under water for Homer Ramsdell (NYSA_B2321-11_18650628_Ramsdell)



Survey of lands under water for Caleb H. Shipman (NYSA_B2321-11_18650628_Shipman)



Survey of lands under water for Anning Smith (NYSA_B2321-11_18650628_Smith)



Survey of lands under water for Matthew Vassar & Oliver H. Booth (NYSA_B2321-11_18650628_Vassar-Booth)



Survey of lands under water for Boston, Hartford & Erie Railroad Company (NYSA_B2321-11_18651017_Boston_Hartford_and_Erie_RR)



**Survey of lands under water for James H. Carll & Martin Willets
(NYSA_B2321-11_18651017_Carll-Willets)**



**Survey of lands under water for Augustus Hurd & William Mallory
(NYSA_B2321-11_18651229_Hurd-Mallory)**



Survey of lands under water for Stephen H. Provost (NYSA_B2321-11_18651229_Provost_01)



Survey of lands under water for Stephen H. Provost (NYSA_B2321-11_18651229_Provost_02)



**Woods and Waters or Summer in the Saranacs
(NYSL_SC21296_B1_F15_a)**
