



Plan of Gates for Lower Lock, Upper Side Cut, West Troy (NYSA_B0292-85_V004_84)



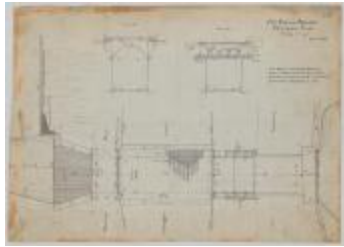
Map and Profile of Lock 29 and 30 near Schoharie Creek (NYSA_B0292-85_V010X_039)



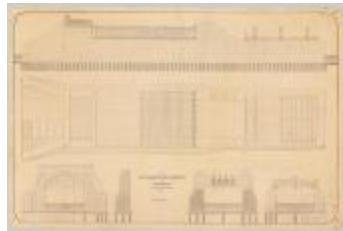
Continuation of Map and Profile of Lock 29 and 30 near Schoharie Creek (NYSA_B0292-85_V010X_040)



Blueprint Map of Schoharie Creek Feeder (NYSA_B0292-85_V010Y)



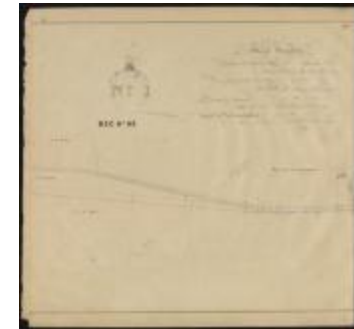
Plan for Fort Edward aqueduct, Champlain canal (NYSA_B0292-85_V011_05)



Plan for aqueduct across Wood Creek at Fort Edward (NYSA_B0292-85_V011_07)



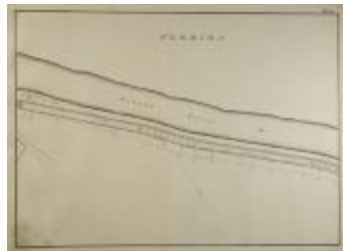
Location Map of Schoharie Creek Dam (NYSA_B0292-85_V019_061B)



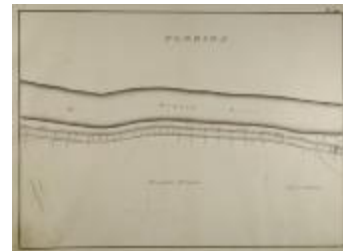
Enlargement of the Erie Canal: Oriskany to Stanwix, Sections 118-119, part 1 of 2 (NYSA_B0292-85_V028_06)



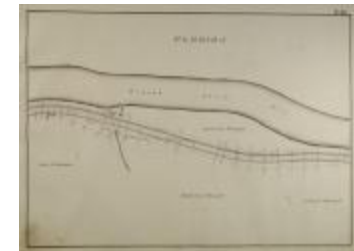
Enlargement of the Erie Canal: Oriskany to Stanwix, Sections 118-119, part 2 of 2 (NYSA_B0292-85_V028_07)



Map of the Erie Canal and Mohawk River running through the Town of Florida in Montgomery County (NYSA_B0292-85_V031_31)



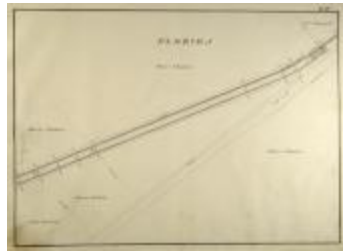
Map of the Erie Canal and Mohawk River running through the Town of Florida in Montgomery County (NYSA_B0292-85_V031_32)



Map of the Erie Canal and Mohawk River running through the Town of Florida in Montgomery County (NYSA_B0292-85_V031_33)



Map of the Erie Canal running through the Town of Florida in Montgomery County (NYSA_B0292-85_V031_34)



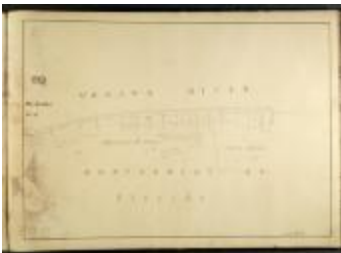
Map of the Erie Canal running through the Town of Florida in Montgomery County (NYSA_B0292-85_V031_35)



Map of the Erie Canal running through the Towns of Florida and Glen and across the Schoharie Creek (NYSA_B0292-85_V031_36)



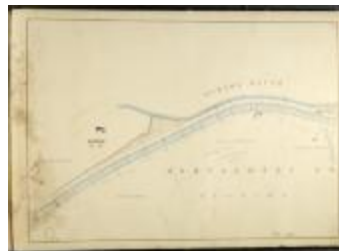
Map of the Erie Canal and Mohawk River running through the Town of Florida in Montgomery County (NYSA_B0292-85_V034_37)



Map of the Erie Canal and Mohawk River running through the Town of Florida in Montgomery County (NYSA_B0292-85_V034_38)



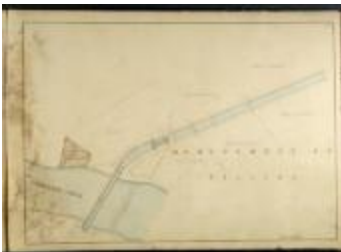
Map of the Erie Canal and Mohawk River running through the Town of Florida in Montgomery County (NYSA_B0292-85_V034_39)



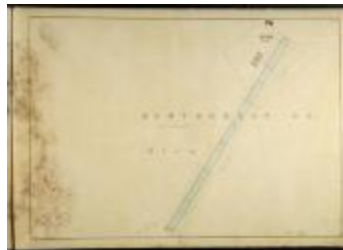
Map of the Erie Canal and Mohawk River running through the Town of Florida in Montgomery County (NYSA_B0292-85_V034_40)



Map of the Erie Canal running through the Town of Florida in Montgomery County (NYSA_B0292-85_V034_41)



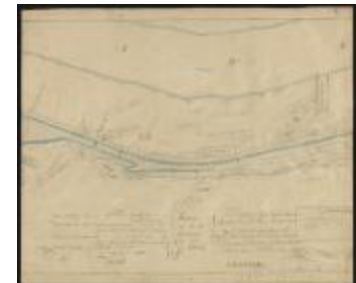
Map of the Erie Canal and Schoharie Creek running through the Town of Florida in Montgomery County (NYSA_B0292-85_V034_42)



Map of the Erie Canal running through the Town of Glen in Montgomery County (NYSA_B0292-85_V034_43)



Map showing the Erie Canal in Saratoga County, part 1 of 2 (NYSA_B0292-85_V035_01A)



Map showing the Erie Canal in Saratoga County, part 2 of 2 (NYSA_B0292-85_V035_01B)



Map showing the Erie Canal in the City of Schenectady, part 1 of 3 (NYSA_B0292-85_V035_06A)



Map showing the Erie Canal in the City of Schenectady, part 2 of 3 (NYSA_B0292-85_V035_06B)



Map showing the Erie Canal in the City of Schenectady, part 3 of 3 (NYSA_B0292-85_V035_07)



Map showing the Erie Canal in Rotterdam, part 1 of 2 (NYSA_B0292-85_V035_11A)



Map showing the Erie Canal in Rotterdam, part 2 of 2 (NYSA_B0292-85_V035_11B)



Map showing the Erie Canal in Montgomery County "The Noses", part 1 of 2 (NYSA_B0292-85_V035_20A)



Map showing the Erie Canal in Montgomery County "The Noses", part 2 of 2 (NYSA_B0292-85_V035_20B)



Map showing the Erie Canal in Montgomery County "The Noses", part 1 of 2 (NYSA_B0292-85_V035_21A)



Map showing the Erie Canal in Montgomery County "The Noses", part 2 of 2 (NYSA_B0292-85_V035_21B)



Map showing the Erie Canal in Montgomery County section 75 (NYSA_B0292-85_V035_23)



Map showing detail from The Noses in Montgomery County (NYSA_B0292-85_V035_32-34)



End Elevation of the Scale and Frame (NYSA_B0292-85_V046_11)



Weigh Lock House at West Troy
(NYSA_B0292-85_V046_12)



Map showing the Erie Canal in Cohoes Falls
(NYSA_B0292-85_V054_07)



Enlarged Erie Canal, Saratoga County
(NYSA_B0292-85_V054_12)



Map showing the Erie Canal in Saratoga
County (NYSA_B0292-85_V054_17)



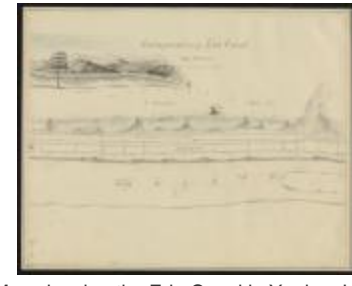
Map showing the Erie Canal in Saratoga
County (NYSA_B0292-85_V054_18)



Map showing the Erie Canal Lock 21 Upper
Mohawk Aqueduct (NYSA_B0292-
85_V054_27)



Map showing the Erie Canal in Montgomery
County, Section 44 (NYSA_B0292-
85_V054_42)



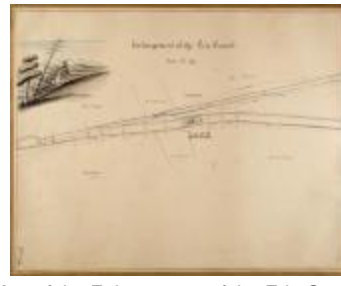
Map showing the Erie Canal in Yankee Hill,
Section 47 (NYSA_B0292-85_V054_48)



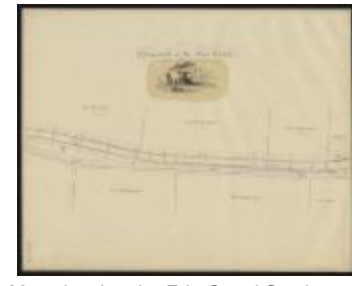
Map of the Enlargement of the Erie Canal.
Section 50 (NYSA_B0292-85_V054_50)



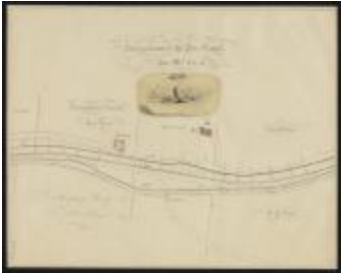
Map showing the Erie Canal Section 50
(NYSA_B0292-85_V054_51)



Map of the Enlargement of the Erie Canal.
Section 51 (NYSA_B0292-85_V054_52)



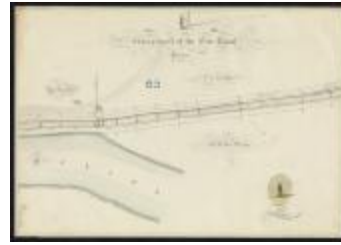
Map showing the Erie Canal Section 54
(NYSA_B0292-85_V054_58)



Map showing the Erie Canal Sections 54-55 (NYSA_B0292-85_V054_59)



Map showing the Erie Canal Sections 55-56 (NYSA_B0292-85_V054_61)



Map showing the Erie Canal (NYSA_B0292-85_V054_66)



Map showing location of the Erie Canal in Watervliet (NYSA_B0292-85_V060_23)



Map showing the Erie Canal improvements at lock 27: Phillip's aqueduct (NYSA_B0292-85_V060_28)



Black River Canal Section 30, locks 97-102, part 1 of 2 (NYSA_B0292-85_V069_13)



Black River Canal Section 30, locks 97-102, part 2 of 2 (NYSA_B0292-85_V069_14)



Reservoir of North Branch of Black River, part 1 of 3 (NYSA_B0292-85_V069_20)



Reservoir of North Branch of Black River, part 2 of 2 (NYSA_B0292-85_V069_21)



Reservoir of North Branch of Black River, part 3 of 3 (NYSA_B0292-85_V069_22)



Reservoir of South Branch of Black River, part 1 of 2 (NYSA_B0292-85_V069_24)



Reservoir of South Branch of Black River, part 2 of 2 (NYSA_B0292-85_V069_25)



Map showing the Erie Canal in Watervliet and West Troy basin. (NYSA_B0292-85_V070_15)



Map showing the Erie Canal in Schenectady County (NYSA_B0292-85_V070_57)



Map showing the Erie Canal in Boonville "Boater" (NYSA_B0292-85_V071_01A)



Map showing the Erie Canal blue line and encroachments (NYSA_B0292-85_V071_01B)



Map showing the Erie Canal in Leyden (NYSA_B0292-85_V071_10)



Map showing the Erie Canal in Lyons Falls Terminus, at the meeting of the Black River and the Moose River (NYSA_B0292-85_V071_21)



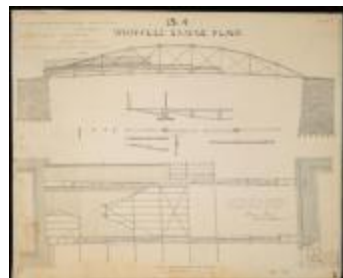
Map showing the Erie Canal in Boonville alongside the Black River (NYSA_B0292-85_V071_31)



Map showing the Erie Canal in Boonville near Alder Creek Flow (NYSA_B0292-85_V071_39)



Frontispiece of volume 71 (NYSA_B0292-85_V071_71T)



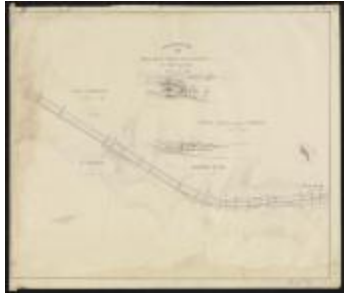
No. 4. Whipples Bridge Plan (NYSA_B0292-85_V072_02)



Map of the State of New York showing the locations of its canals and railroads (NYSA_B0292-85_V088_03)



Map showing the Erie Canal in Boonville "Gorge" with Lock 44, Lock 45, Lock 46 and Lock 57 (NYSA_B0292-85_V088_46)



Map showing the Erie Canal from Boonville to Port Leyden (NYSA_B0292-85_V088_60)



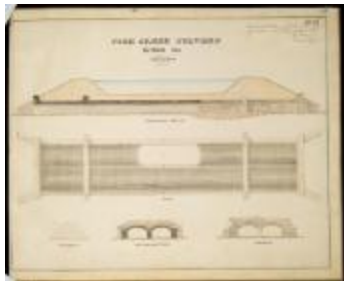
Map showing the Erie Canal in Lock 74, Section 24 (NYSA_B0292-85_V088_61)



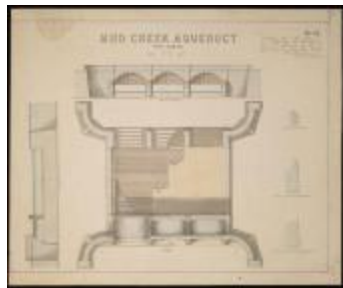
Map showing the Erie Canal in Lewis County, Section 25 (NYSA_B0292-85_V088_63)



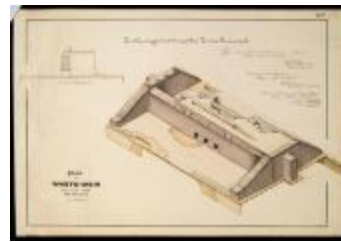
Waste Weir Gate (NYSA_B0292-85_V090_19)



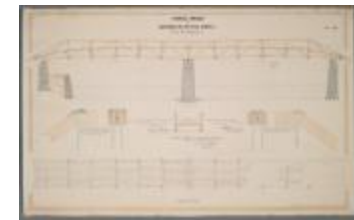
Fish Creek Culvert, Section 318 (NYSA_B0292-85_V090_35)



Mud Creek Aqueduct near Palmyra (NYSA_B0292-85_V090_57)



Plan of Waste-Weir, Section 284, Tow-Path Side (NYSA_B0292-85_V101_35)



Change-Bridge on Sections Nos. 1&2 at York Street, City of Buffalo. (NYSA_B0292-85_V101_39)



Erie Canal. Structure Map and Plan Books (NYSA_B0292_01)