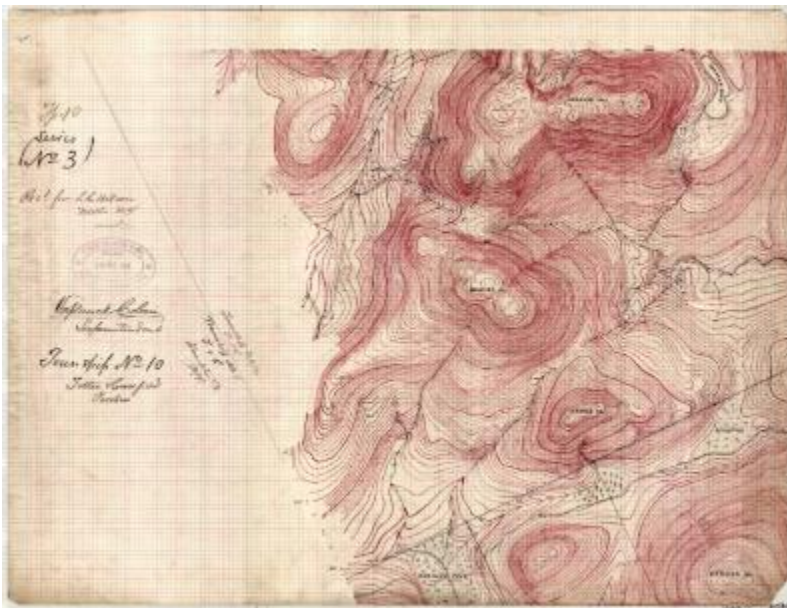


## Map of Township Number 10 (Marked #3 of Series)



Hand drawn survey map of Township Number 10. This map features various mountains around Township 10, as well as the line dividing Township 10 from Township 1. The mountains featured are Johnson Mountain, Dunning Mountain, Spruce Mountain, and Round Mountain. The map shows the elevation of the mountains through contour lines. It also features Johnson Pond and Dunning Pond. The map is marked, "Private copy from private papers of Verplanck Colvin." Original map is 21.5" x 16.3" inches and is held by the Dept. of Environmental Conservation.

### Identifier

NYSA\_B1405-96\_107B2

### Alternate Identifier

DMS ID Number: 184714

### Date

1898

### Contributor

Colvin, Verplanck, 1847-1920

### Repository

New York State Archives

### Source

New York State Archives, Dept. of Environmental Conservation, Bureau of Real Property, Verplanck Colvin maps of the Adirondack wilderness

### Rights

This image is provided for education and research purposes. Rights may be reserved. Responsibility for securing permissions to distribute, publish, reproduce or other use rest with the user. For additional information see our [Copyright and Use Statement](#)

### Special Project

Environmental History Virtual Resource Collection

### More From This Series

Verplanck Colvin maps of the Adirondack wilderness

### Geographic Locations

Adirondack Mountains (is associated with)