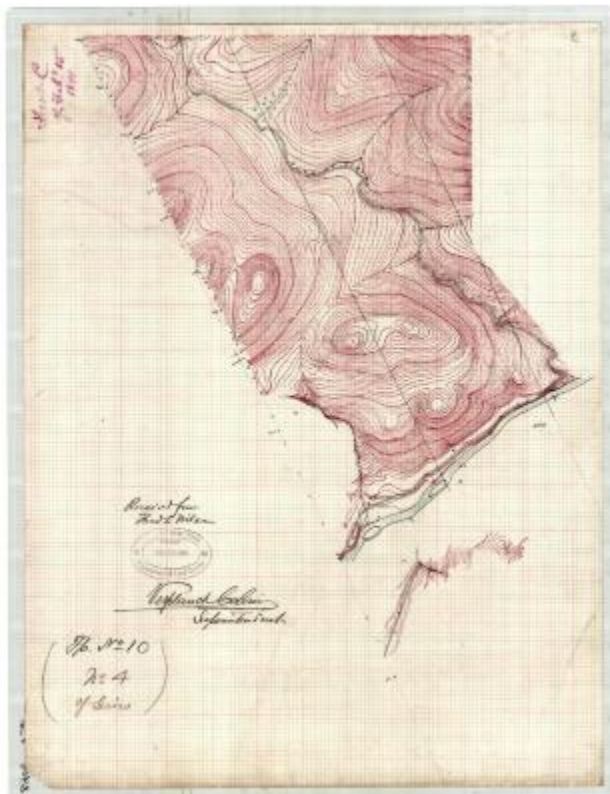


Map of Township Number 10 (Marked #4 of Series)



Hand drawn survey map of Township number 10. This map shows Dunning Stream as it flows into an unnamed river. It also shows the countour lines of the area around Dunning Stream. The map is marked, "Private copy from private papers of Verplanck Colvin." Original map is 17.2" x 22" inches and is held by the Dept. of Environmental Conservation.

Identifier

NYSA_B1405-96_107B3

Alternate Identifier

DMS ID Number: 184715

Date

1898

Contributor

Colvin, Verplanck, 1847-1920

Repository

New York State Archives

Source

New York State Archives, Dept. of Environmental Conservation, Bureau of Real Property, Verplanck Colvin maps of the Adirondack wilderness

Rights

This image is provided for education and research purposes. Rights may be reserved. Responsibility for securing permissions to distribute, publish, reproduce or other use rest with the user. For additional information see our [Copyright and Use Statement](#)

Special Project

Environmental History Virtual Resource Collection

More From This Series

Verplanck Colvin maps of the Adirondack wilderness

Geographic Locations

Adirondack Mountains (is associated with)

Hamilton County (is associated with)