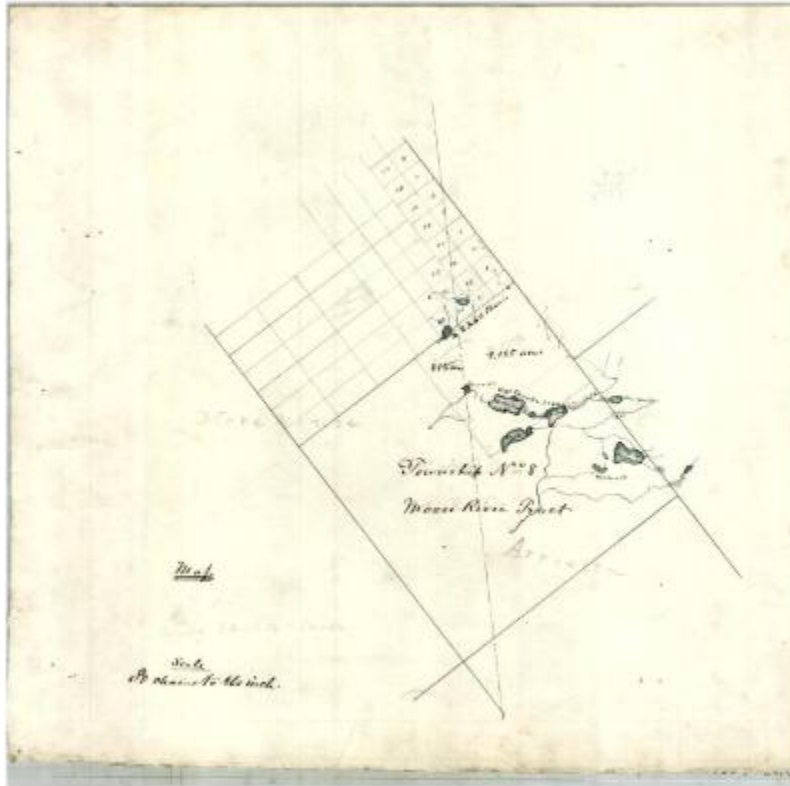


Map of Township Number 8 and Moose River Tract



Hand drawn survey map of Township number 8 and Moose River Tract. This map features the West Canada Lakes, which include, Trout Lake, Middle Lake, East Lake, South Lake, Lake Lowd and Sturgess Lake. It also shows the various streams that run to and from the lakes. The map is marked, "Private copy from private papers of Verplanck Colvin." Original map is 17.9" x 17.6" inches and is held by the Dept. of Environmental Conservation.

Identifier

NYSA_B1405-96_109A

Alternate Identifier

DMS ID Number: 184716

Date

circa 1870 – 1890

Contributor

Colvin, Verplanck, 1847-1920

Repository

New York State Archives

Source

New York State Archives, Dept. of Environmental Conservation, Bureau of Real Property, Verplanck Colvin maps of the Adirondack wilderness

Rights

This image is provided for education and research purposes. Rights may be reserved. Responsibility for securing permissions to distribute, publish, reproduce or other use rest with the user. For additional information see our [Copyright and Use Statement](#)

Special Project

Environmental History Virtual Resource Collection

More From This Series

Verplanck Colvin maps of the Adirondack wilderness

Geographic Locations

Adirondack Mountains (is associated with)

Herkimer County (is associated with)