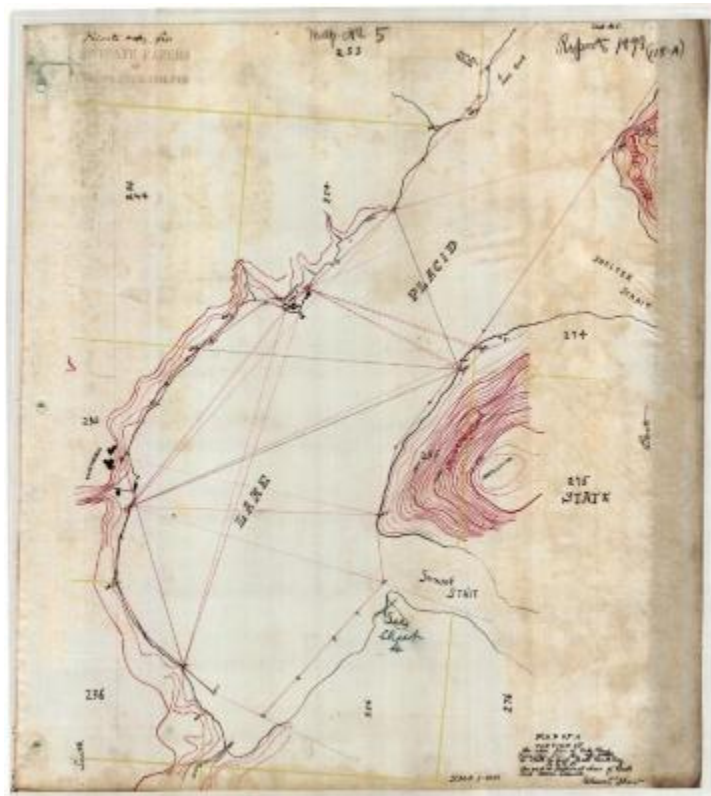


Map of a Portion of the N. W. Shore of Lake Placid, showing North Elba townline



Hand drawn survey map of a portion of the North West Shore of Lake Placid, showing North Elba townline. This map also shows a portion of the North West shore line of Buck Island, as well as, the town line that separates North Elba and St. Armand. The map is marked, "Private copy from private papers of Verplanck Colvin." Original map is 20" x 22.1" inches and is held by the Dept. of Environmental Conservation.

Identifier

NYSA_B1405-96_118A06

Alternate Identifier

DMS ID Number: 184672

Date

1898

Contributor

Colvin, Verplanck, 1847-1920

Repository

New York State Archives

Source

New York State Archives, Dept. of Environmental Conservation, Bureau of Real Property, Verplanck Colvin maps of the Adirondack wilderness

Rights

This image is provided for education and research purposes. Rights may be reserved. Responsibility for securing permissions to distribute, publish, reproduce or other use rest with the user. For additional information see our [Copyright and Use Statement](#)

Special Project

Environmental History Virtual Resource Collection

More From This Series

Verplanck Colvin maps of the Adirondack wilderness

Geographic Locations

Adirondack Mountains (is associated with)
Essex County (is associated with)