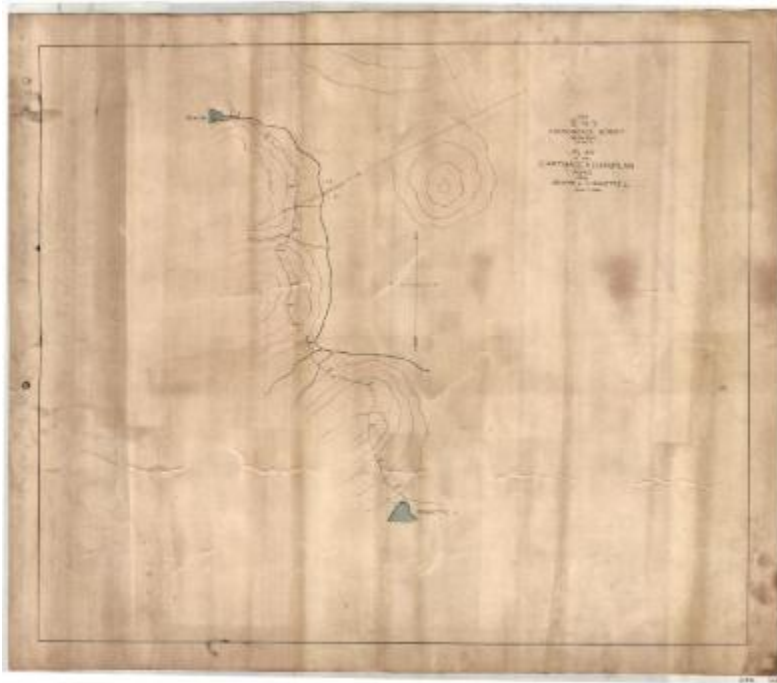


## Plan of the Carthage and Champlain Road from Beach's Lake to Raquette Lake



Hand drawn survey map of the plan of the Carthage and Champlain Road from Beach's Lake to Raquette Lake. This map shows part of Beach's and Raquette Lake as well as the road connecting the two lakes. It also shows the line dividing Township 39 and 40. The map is marked, "Private copy from private papers of Verplanck Colvin." Original map is 35.3" x 30.3" inches and is held by the Dept. of Environmental Conservation.

### Identifier

NYSA\_B1405-96\_21B

### Alternate Identifier

DMS ID Number: 184725

### Date

1879

### Contributor

Colvin, Verplanck, 1847-1920

### Repository

New York State Archives

### Source

New York State Archives, Dept. of Environmental Conservation, Bureau of Real Property, Verplanck Colvin maps of the Adirondack wilderness

### Rights

This image is provided for education and research purposes. Rights may be reserved. Responsibility for securing permissions to distribute, publish, reproduce or other use rest with the user. For additional information see our [Copyright and Use Statement](#)

### Special Project

Environmental History Virtual Resource Collection

### More From This Series

Verplanck Colvin maps of the Adirondack wilderness

### Geographic Locations

Adirondack Mountains (is associated with)

Hamilton County (is associated with)