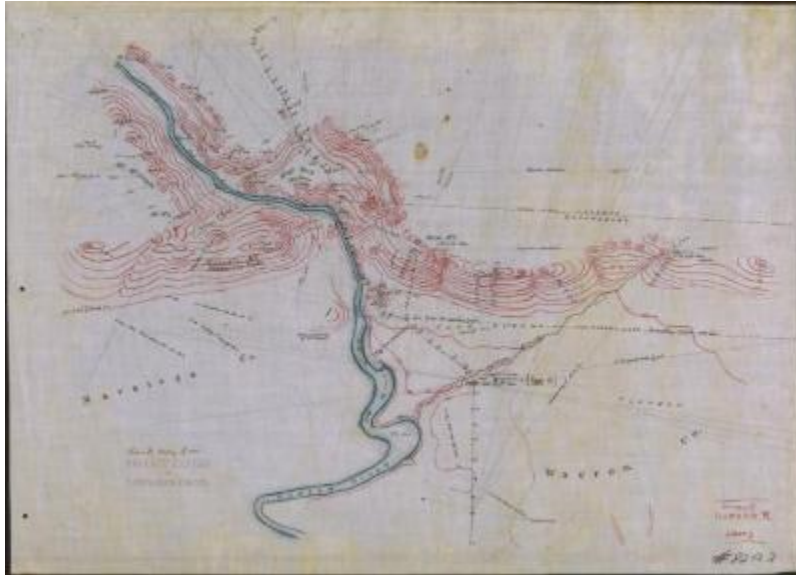


Survey of Hudson River, Sheet 1



Hand drawn survey map of the Hudson River, and surrounding areas in Warren and Saratoga counties in the Adirondack mountains. Land features include Hog's Back Plateau, Mt. Moreau, Mt. McGregor and Sand Plains. Map includes lines of triangulation, elevations, distance and other notations, labeled water bodies, town boundary line between Luzerne and Queensbury, Kayaderosseras Patent and Allotment(s) 23 and 25. The map is marked, "Private copy from private papers of Verplanck Colvin." Original map is 21 x 28 inches and is held by the Dept. of Environmental Conservation.

Identifier

NYSA_B1405-96_62

Alternate Identifier

DMS ID Number: 81084

Date

1800s

Repository

New York State Archives

Source

New York State Archives, Dept. of Environmental Conservation, Verplanck Colvin maps of the Adirondack wilderness, B1405-96, SARA No.62.

Rights

This image is provided for education and research purposes. Rights may be reserved. Responsibility for securing permissions to distribute, publish, reproduce or other use rest with the user. For additional information see our [Copyright and Use Statement](#)

Special Project

Environmental History Virtual Resource Collection

More From This Series

Verplanck Colvin maps of the Adirondack wilderness

Geographic Locations

Saratoga County (is associated with)

Warren County (is associated with)

Adirondack Mountains (is associated with)