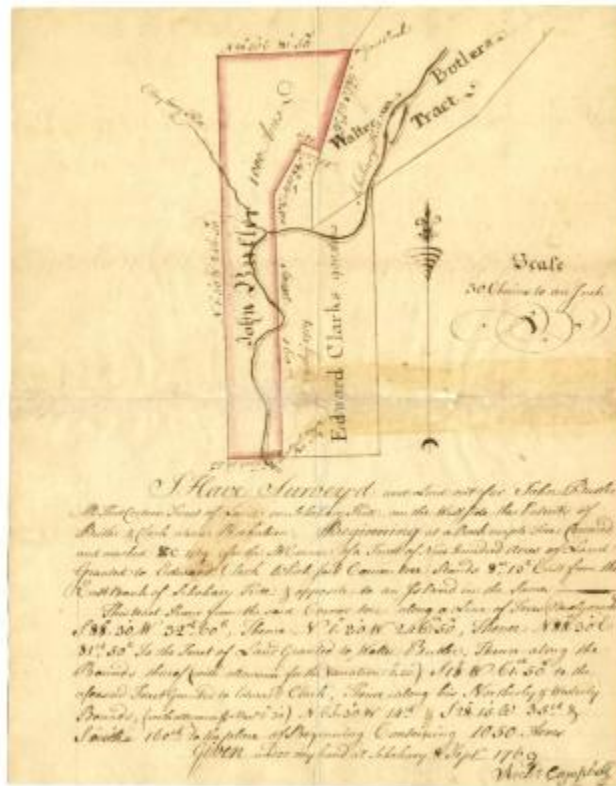


## Return of a survey for John Butler, with map, 1769, p.5b



Return of a survey for John Butler, of a tract of 1,050 acres of land on Schoharie kill, (Blenheim, Schoharie Co.) with map.

### Identifier

NYSA\_A0272-78\_V26\_p005b

### Alternate Identifier

DMS ID Number: 184965

### Date

September 8 1769

### Repository

New York State Archives

### Source

New York State Archives. Dept. of State. Applications for land grants, 1642-1803. A0272-78, Volume 26, page 5b.

### Rights

This image is provided for education and research purposes. Rights may be reserved. Responsibility for securing permissions to distribute, publish, reproduce or other use rest with the user. For additional information see our [Copyright and Use Statement](#)

### More From This Series

Applications for land grants