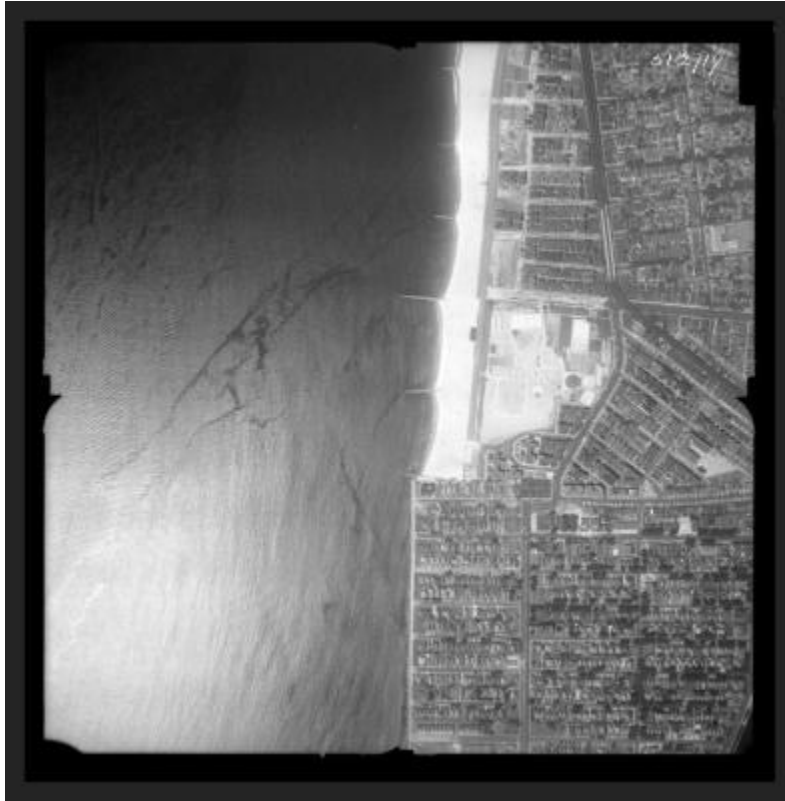


## Waterfront, N.Y.



View of waterfront, possibly Coney Island beach in Kings County. The exact location is not identified. Jetties for stabilizing the beach are visible.

**Identifier**

NYSA\_B1598-99\_2719

**Alternate Identifier**

**DMS ID Number:** 138482

**Date**

July 24 1951

**Repository**

New York State Archives

**Source**

New York State Archives, Aerial photographic prints and negatives of New York State sites, 1941-1957, B1598-99. Box 4, no. 36.

**Rights**

This image is provided for education and research purposes. Rights may be reserved. Responsibility for securing permissions to distribute, publish, reproduce or other use rest with the user. For additional information see our [Copyright and Use Statement](#)

**More From This Series**

Aerial photographic prints and negatives of New York State sites

**Geographic Locations**

Brooklyn (is associated with)