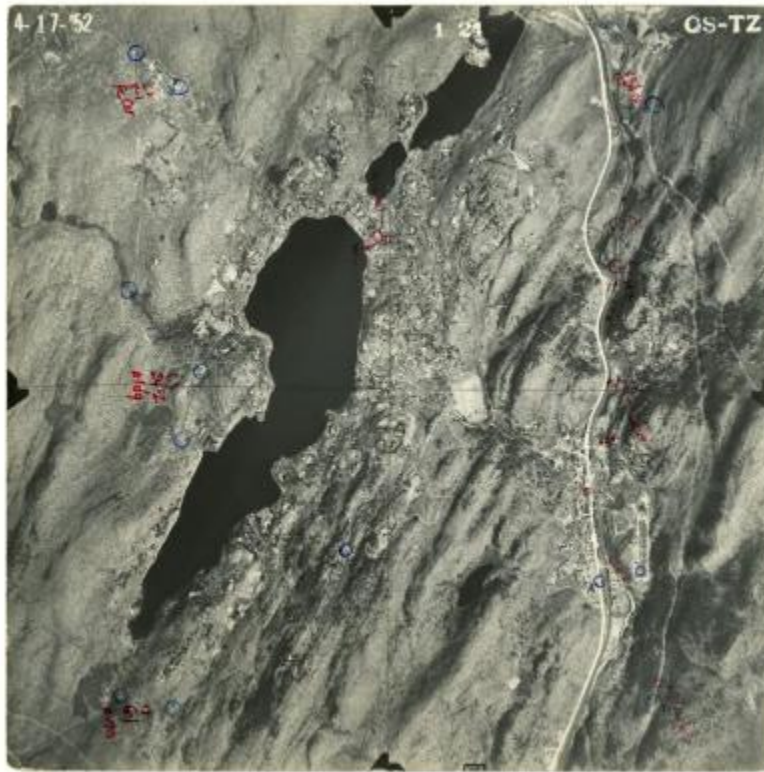


## Aerial photograph of Sloatsburg USGS quadrangle

**Identifier**

NYSA\_B2009-09\_Sloatsburg\_1952\_1\_24

**Date**

1952

**Repository**

New York State Archives

**Source**

New York State Archives. New York (State). Dept. of Transportation. Map Information Unit. Aerial photographs, [ca. 1930s-2000]. B2009-09.

**Rights**

This image is provided for education and research purposes. Rights may be reserved. Responsibility for securing permissions to distribute, publish, reproduce or other use rest with the user. For additional information see our [Copyright and Use Statement](#)

**More From This Series**

Department of Transportation Map Information Unit aerial photographs