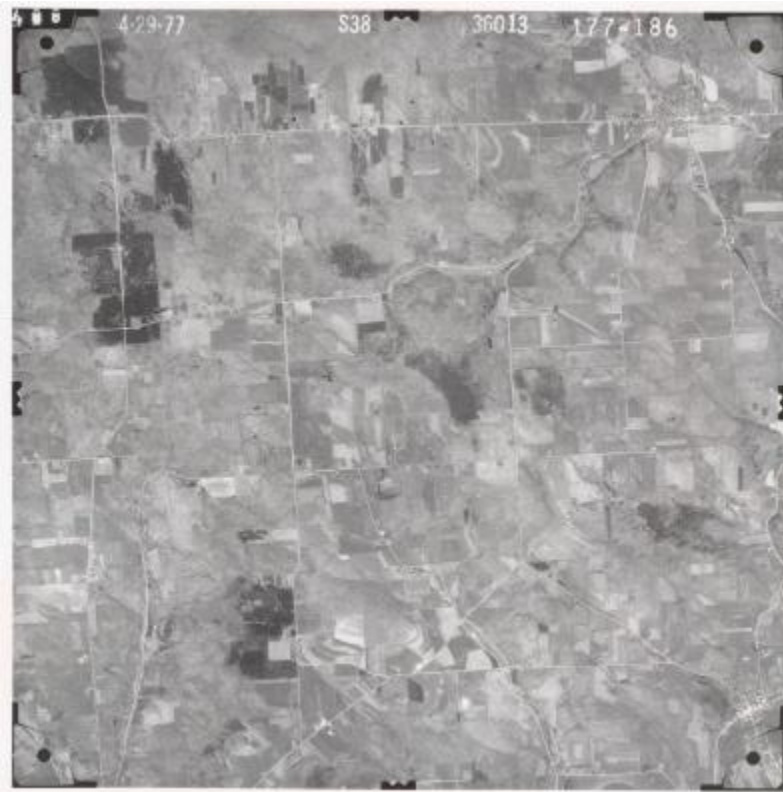


## Aerial photograph of Gerry USGS quadrangle



### Identifier

NYSA\_B2009-09A\_Gerry\_1977\_177\_186

### Date

1977

### Repository

New York State Archives

### Source

New York State Archives. New York (State). Dept. of Transportation. Map Information Unit. Aerial photographs, [ca. 1930s-2000]. B2009-09A

### Rights

This image is provided for education and research purposes. Rights may be reserved. Responsibility for securing permissions to distribute, publish, reproduce or other use rest with the user. For additional information see our [Copyright and Use Statement](#)

### More From This Series

Department of Transportation Map Information Unit aerial photographs